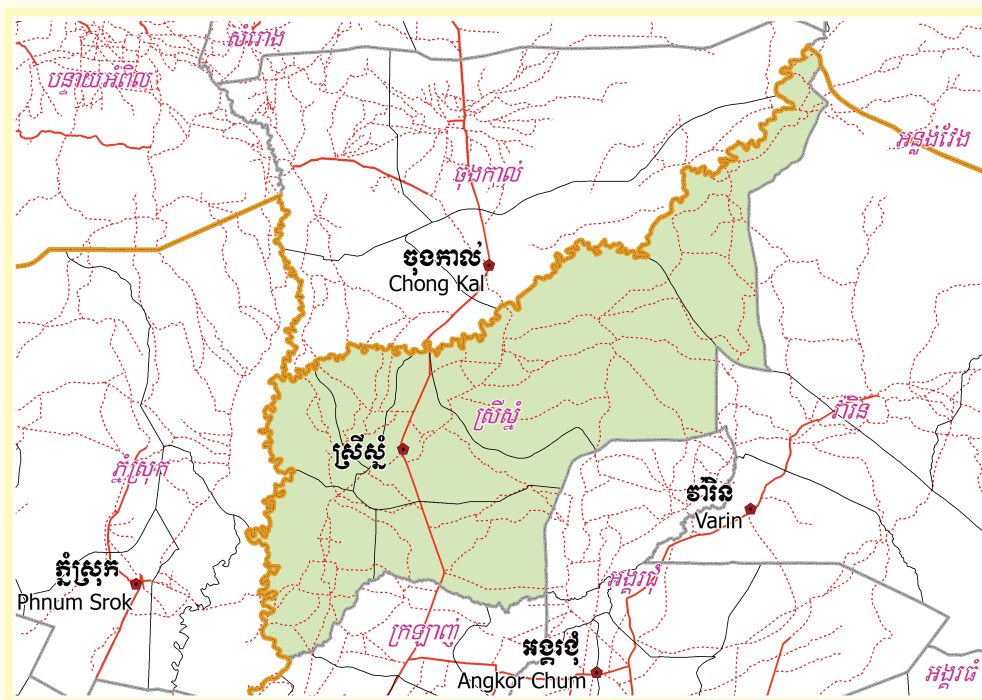


## A decorative horizontal line featuring a central rose flanked by symmetrical, flowing scrollwork on both sides.



## October 2009



# **Srei Snam District Data Book 2009**

District Code Nr: 1712

**Siem Reap Province**



# Table of Contents

List of Abbreviations .....	i
Glossary.....	ii
Preface .....	vi
Introduction .....	vii
SECTION A: GEOGRAPHY .....	1
1 Administration and Infrastructure.....	3
2 Land Use and Natural Resources.....	5
3 Geography .....	7
3.1 Land Area .....	7
3.2 Distances between Offices .....	7
SECTION B: DISTRICT PROFILE .....	9
1 General Information .....	11
1.1 Population of the District.....	11
1.2 Occupations .....	12
1.3 Property .....	14
2 Infrastructure and Economy.....	16
2.1 Roads in meters over 3 years.....	16
2.2 Sewerage Pipes in meters over 3 years.....	16
2.3 Drainage and Bridges .....	16
2.4 Services in the District .....	16
2.5 Agriculture.....	17
3 Social Aspects .....	28
3.1 Education .....	28
3.2 Health.....	34
3.3 Water and Sanitation .....	36
3.4 Vulnerable groups.....	40
3.5 Migration .....	42
4 Natural Resources and Environment (NRE).....	44
4.1 Families involved with NRE issues over 3 years .....	44
4.2 Percentage of Families involved with Natural Resource issues, by Commune, for 2008 .....	44
4.3 Percentage Houses with access to Garbage collection and Families affected by environmental Pollution, by Commune, for 2008 .....	44
4.4 Percentage Families using chemical Fertilizer and chemical Pesticides, by Commune, for 2008 ..	45
5 Administration and Security .....	46

5.1	Birth Registration across 3 years.....	46
5.2	Number of unregistered Infants born in 2008, by Commune .....	46
5.3	Registered criminal Cases over 3 years .....	46
5.4	Registered criminal Cases per 10,000 people, by Commune, for 2008.....	46
5.5	Number of registered Land Disputes, by Commune, in 2008 .....	46
6	Gender .....	47
6.1	Registered Domestic Violence over 3 years.....	47
6.2	Percentage of registered cases of Families experiencing domestic Violence, by Commune, in 2008 .....	47
6.3	Women's involvement over 3 years.....	47
6.4	Percentage of Female Participants in Civil Society and of 18-60 year women with uncertain Jobs, by Commune, in 2008 .....	48
6.5	Female-headed Households over 3 years.....	48
6.6	Percentage female-headed Households and with Children of less than 5 years old, by Commune, in 2008 .....	48
7	Indigenous People in the District .....	49
7.1	Ethnic Minorities in the District over 3 years.....	49
7.2	Other Minorities in the District over 3 years.....	49
	SECTION C: PLANS AND PROJECTS .....	51
8	Priorities and Plans .....	53
8.1	Priorities of Commune Councils for 2009 in the District by Sector .....	53
8.2	Temporary Agreements by Commune, for 2009 .....	58
8.3	Outputs, estimated and actual costs of C/S Fund Projects between 2005 and 2008, by Commune .....	65
8.4	Total Expenditure on C/S Fund Projects by sector and commune between 2005 and 2008.....	66
8.5	Actual 2009 C/S Fund projects by Commune .....	66
9	District level Projects from 2006 to 2009 .....	67
9.1	District Initiative Infrastructure Projects from 2006 to 2009 .....	67
9.2	District Initiative Service Projects from 2006 to 2009 .....	68
9.3	Inter Commune Council Projects in 2008 and 2009 .....	68
9.4	Other Projects in 2008 and 2009 .....	69
	SECTION D: SERVICES AND ORGANIZATIONS .....	71
10	Infrastructure.....	73
10.1	Length of and Expenditure on Roads in 2008, by District .....	73
10.2	Scale of and Expenditure on Irrigation in 2008, by District.....	73
10.3	Power Supply in 2008, by District .....	74
11	Health Facilities.....	75

11.1 Health Facilities in the Province, by Operational District.....	75
11.2 Health Facilities and Staff in the province, by Operational District.....	75
11.3 Deliveries in 2007 in the Province, by Operational District.....	77
12 Education .....	78
12.1 Schools, Classes, Students, Staff, for for all levels, for 2007/2008 by District.....	78
12.2 Characteristics of Schools and School Principals for 2007/2008 by Commune .....	78
12.3 Enrolment by Level of Education, 2006/2007 by Commune .....	79
12.4 Enrolment by Level of Education, 2007/2008 by Commune .....	79
12.5 Aspects of Enrolment for 2007/2008 by Commune.....	79
12.6 School Buildings for all schools in the District for 2007/2008, by Commune .....	80
12.7 Conditions of Classrooms and Existence of Separate School Office and Library, by Commune	80
12.8 Community Participation and Financing across all schools in the District for 2007/2008 by Commune .....	80
12.9 Percentage Student Flow Rates and Graduation by level 2006/2007, by Commune .....	81
13 Staff and Resources at the District .....	82
13.1 District Councilors elected in 2009 .....	82
13.2 Committees of the Council.....	82
13.3 Board of Governors.....	82
13.4 Offices under Sala Krong, Sala Srok and Sala Khan .....	83
13.5 Municipality/District/Khan line offices.....	83
13.6 Properties and Equipment of District Administration .....	83
13.7 Registered Revenue of the District Administration in 2008 .....	84
13.8 Services in the District .....	84
13.9 Civil Society Organizations active in the District.....	85
13.10 Private Sector Organizations.....	86
SECTION E: POVERTY DATA .....	89
14 Data on Poverty .....	91
14.1 Predicted Poverty Rates for 2009, by commune .....	91
14.2 Poverty data from survey.....	91





## List of Abbreviations

#	Number
AGR	Agriculture
BR	Birth Registration
C. Pilot	Piloted Commune
C/S	Commune / Sangkat
CBO	Community-Based Organization
CDB	Commune Database
CDPD	Commune Development and Planning Database
CIP	Commune Investment plan
CLTS	Community Led-Total Sanitation
Comm.	Commune
Com Cov	Commune Covered
CPA	Complementary Package of Activities
CPS	Community Preschool
CCWC	Commune Committees for Women and Children
DANIDA	Danish International Development Agency
DDLG	Democratic Development and Local Governance Project (EC-UNDP)
DFID	Department For International Development (UK)
DIP	District Initiative Project
DIS	District Information System
District PDRD	District Office of Rural Development
District WP	District Work Plan
DIW	District Integration Workshop
DoLA	Department of Local Administration
Dr	Doctor
DWRM	District Office of Water Resource and Meterology
ECD	Early Childhood education (part of PE)
EMIS	Education Management Information System
Event IC	Celebration of International Days
FDH	Former District Hospital
GTZ	German Society for Technical Cooperation (Gesellschaft für Technische Zusammenarbeit GmbH)
Ha	Hectare
HC	Health Center
HC (NB)	Health Center (no building)
HH	Headed Household
HSI	Intervention for Health
HP	Health Post
HW	Hand Washing
ICC	Inter Commune Council
IFAD	International Fund for Agricultural Development
IND	Industry
Inter-commune	Inter-Commune Project Management Committee or Inter-commune project
IO	International Organization
LASED	Land Allocation for Socio-Economic Development
LGCR	Local Governance for Children's Rights
M&E	Monitoring and Evaluation
MA	Medical Assistant
MoEYS	Ministry of Education, Youth and Sports
MoH	Ministry of Health

MoP	Ministry of Planning
MPA	Minimum Package of Activities
MW1	Primary Midwives
MW2	Secondary Midwives
n/a	Not available
NCD	National Contracts Database
NCDD	National Committee for Sub-National Democratic Development
NGO	Non-Governmental Organization
NRML	Natural Resources Management and Livelihood
NU1	Primary Nurse
NU2	Secondary Nurse
OD	Operational District
ODF	Open Defecation Free
Ope. Costs	Operational Costs
Others	Other Staff
PBW	Public Works
PDoEYS	Provincial Department of Education, Youth and Sport
PDRD	Provincial Department of Rural Development
PDWRM	Provincial Department of Water Resource and Meteorology
PE	Parenting Education
PHAST	Participatory Hygiene and Sanitation Transformation
PHD	Provincial Health Department
PID	Project Information Database
PMC	Project Management Committee
Pop 04-05	Population Covered 2004 or 2005
PSDD	Project to Support Democratic Development through Decentralization and Deconcentration
RRD	Rural Road Development
RH	Referral Hospital
RILGP	Rural Investment and Local Governance Project
RPRP	Rural Poverty Reduction Program
RuLIP	Rural Livelihoods Improvement Program
SIDA	Swedish International Development Cooperation Agency
SPPA	Senior Provincial Program Advisor
TBA	Traditional Birth Attendant
UNDP	United Nations Development Project
UNICEF	United Nations Children's Fund
Vil	Village
Vil Cov	Village Covered
VIL-HC	Distance from Village to Health Center
WASH	Water, Sanitation and Hygiene
WRM	Water Resource and Meteorology

## Glossary

**C/S Fund:** The Commune/Sangkat Fund is established and managed by the Government of Cambodia to provide financial support for development projects and administrative costs of Commune/Sangkat Councils. The amount is determined as a percentage of the National Budget (for 2009: 2.8% over the 2008 budget) and is expected to increase gradually over the years. The total 2009 budget under this fund is \$ 27,643,902 (of which \$ 19,272,170 is for Development Projects and \$ 8,371,731 for Administration). Under the Rural Investment and Local Governance Project the World Bank currently reimburses the costs of development projects if these meet the Bank's criteria.

**CDB:** the Commune Data Base is a national database, compiled by the Ministry of Planning, on the basis of detailed questionnaires, completed at village and commune level, which are then sent to the Departments of Planning for data entry. The most recent round of data collection took place at the end of 2008 (and is reflected in the District Data Books). Commune, District and Provincial Profiles can be generated from this database and should be available from provincial Departments of Planning.

**CDPD:** the Commune Development and Planning Database is a database maintained by Departments of Planning and Ministry of Planning, recording proposed activities as determined and prioritized by Commune and Sangkat Councils; the Temporary Agreements between these councils and supporting agencies, as decided at District Integration Workshops and details on projects that actually take place at commune, district and provincial levels.

**CIP:** The Commune Investment Plan is a rolling three-year plan, developed and decided by the Commune or Sangkat Council. It sets priorities and identifies the projects proposed for the years to come.

**Commune and Sangkat (C/S):** the Communes (in rural areas) and Sangkats (in urban areas) are the lowest and smallest units of local government. Councils are elected directly, once in five years, for the 1417 Communes and 204 Sangkats. In the C/S there are 14,119 villages, which have Village Chiefs, but don't constitute a formal level of local government.

**DIP:** the District Initiative Project is jointly supported by the MDLF (Multi-Donor Livelihood Facility (supporting the NRM&L Program)) and PSDD. In 2009 it covers 106 districts, 60% of the total in the country, with a budget of \$ 3.2 million. It is focused on capacity development in planning, democratic development, public competitive procurement, financial management and service delivery.

**DIS:** The District Information System is a national database maintained by NCDD, recording resources, staff, revenue, infrastructure and equipment available in the 193 Districts and Khans throughout the country. The last update took place in July 2009.

**District, Municipality and Khan** constitutes the third level of Government in Cambodia. There are 159 rural Districts, 26 Municipalities and 8 Khans of Phnom Penh Capital. They all have Councils which were, for the first time, elected in May 2009, by the Commune/Sangkat Councilors. These councils have a mandate for 5 years.

**DIW:** District Integration Workshops are held between July and October, to bring Commune/Sangkat Councils, looking for support for their projects, together with the governmental and non-governmental agencies that may provide support.

**ICC:** Inter Communes Council projects are executed in 10 provinces under the Democratic and Decentralized Local Governance Project (DDLG). This five year project (2006-2010) is executed by Ministry of Interior and funded by the European Commission and UNDP. The project focuses on improving dialogue partnership and accountability; create a network of Commune Councils at the provincial and national level and support and contribute to local area development for poverty reduction. The work under the ICC component supports investments and services formulated through inter-commune dialogue and planning.

**MEDiCAM:** A non-profit and non-partisan membership organization for NGOs active in Cambodia's health sector. It is the primary networking agency for health-related NGOs.

**NCDD:** the National Committee for sub-National Democratic Development is the inter-ministerial body charged with the implementation of the Organic Law (a key legislative document, adopted in 2008, outlining the envisaged decentralization). NCDD also channels substantial financial assistance by a number of Development Partners, to projects and programs at various levels. This amounted to over \$ 91 million in 2008. More information at: [www.ncdd.gov.kh](http://www.ncdd.gov.kh). This website also provides access to reports, manuals, legal documents, details on projects and more.

**OD:** the Operational Districts are the districts as defined and used by the Ministry of Health. These do not coincide with the 193 (Administrative) Districts and Khans, as used by all other RGC agencies. The Operational Districts are usually larger, and so there are 77 Operational Districts against 193 administrative Districts and Khans. However they do fit within the boundaries of administrative provinces.

**PID:** The Project Information Database is the database maintained by NCDD at national and sub national level, to follow all aspects of projects by Commune and Sangkat Councils, including the C/S Fund projects

### **Provincial Investment Fund (PIF)**

The Provincial Investment Fund is allocated to all Provinces and Municipalities according to a population based formula. Part of the fund is earmarked for support to planning activities of the Provincial / Municipal Department of Planning; and to gender mainstreaming activities of the Provincial Department of Women's Affairs. The remaining "un-earmarked PIF" is allocated by PRDC to sectoral technical departments against established criteria and in response to proposals with prioritisation taking into account: priorities formulated by the CS Councils and aggregated by District into District Priority Activities Matrices (DPAM); alignment with national planning and poverty alleviation criteria, complementarity with other planned activities; and performance of the Department concerned in implementation of activities in previous years. With this provisional allocation, the Department then programs activities through the District Integration Process. Finally, the agreed activities, plus support costs amounting to no more than 25% of the total, are included in a sub-contract signed between PRDC and the Department, pursuant to the overall PSDD contract signed between NCDD and PRDC. Total budget has been around \$ 2 million per year.

**Province:** the 23 Provinces and Phnom Penh Capital City represent the 2<sup>nd</sup> layer of government. They vary in size, from very small, like Kep (approx. 36,000 people) and Pailin (approx. 70,000 people), or large but with small populations, like Mondulkiri (over 60,000 people), and Ratanakiri (over 153,000) to densely populated and large, like Kampong Cham (over 1.7 million people) and Kandal (approx. 1.4 Million people).

**PSDD:** the Project to Support Democratic Development through Decentralization and Deconcentration is funded by DFID (UK), SIDA (Sweden) and UNDP and runs from 2006 till the end of 2010 (including a one year extension). Annual budgets range from \$ 11 million to over \$ 18 million. The project provides core technical support to NCDD and to the provinces, financial support to the C/S Fund, District Initiative, Provincial Investment Fund and capacity building support through training, studies and advisory services.

**RILGP:** The Rural Investment and Local Governance Project is a World Bank funded project that provides substantial support to C/S Fund projects and to developing the required infrastructure, policies, systems and skills. It started in 2003 with a Loan for \$ 22 million for 2003-2007 and was then extended with a Grant of \$ 36 million for the period of 2007-2010. Discussions about a possible RILGP 2 are taking place between RGC and the World Bank.

**RPRP:** the Rural Poverty Reduction Project is a seven year project from 2004 till 2010, funded by IFAD and UNDP and implemented through the Ministry of Agriculture, Forestry and Fishery, supported by the Ministry of Interior and facilitated by NCDD. The project is active in the provinces Prey Veng and Svay Rieng and focuses on 120,600 households below poverty line. The objective is poverty reduction with the active participation of the poor through improved livelihoods, Strengthened capacity, Sustainable farming systems and natural resource management, new and/or rehabilitated infrastructure development, increase accessibly to technology, services and markets for their economic and social development.

**RULIP:** the Rural Livelihoods Improvement Project is implemented by the Ministry of Agriculture Forestry and Fisheries (MAFF)' Project Support Unit- PSU, with the NCDD playing the role of cooperating agency. Funded by IFAD and UNDP, the project will run till 2014. The target group consists of poor households who have little or even no land, few livestock or other assets and often many dependents. The main goal of the project is to directly or indirectly improve the livelihood systems, food security and incomes of a total of 33,900 rural poor, ethnic minority and female headed households in targeted village of Kratie, Preah Vihear and Ratanakiri provinces in a sustainable manner.

**Seth Koma:** The UNICEF funded Seth Koma program focuses on measurable action for children and women. During 2006 -2010 it is implemented in six provinces. Government and UNICEF pursue a set of inter-related goals, addressing critical stages of the life cycle of the child: a) Mothers have safe pregnancies and deliveries and healthy newborns; b) best possible start in life of infant; c) Children enter schools at the right age of six years; d) Children are protected from exploitation, abuse, violence, discrimination and other risks; and e) Youth and adolescents acquire life skills, express their views, participate in the decisions.

## **Preface**

The Government of Cambodia attaches great importance to optimal use of scarce resources and to participatory planning and management at all levels. The Organic Law which was adopted in 2008 provides the legal context for further steps towards improving and decentralizing planning, management and monitoring, and towards greater accountability and transparency of institutions at sub-national levels.

The Government has established elected Councils at the sub-national levels, and we will progressively give them the responsibilities, together with the human and financial resources, to deliver a wide range of public services. They will be more democratic, more efficient, more transparent and accountable, better at addressing gender and other inequalities, and at fighting corruption. We recognize that development does not come from government alone; it needs the involvement of citizens, civil society and the private sector, and the new system will facilitate this.

A central element in this process is the availability of information on any aspect of development to all concerned parties. The newly elected Councillors at District and Khan level, line departments operating at these levels, but also NGOs, Development Partners, Commune Councillors and citizens throughout Cambodia need information on problems and requirements, resources and opportunities, services and agencies, plans and projects. They will need such information to better understand the present situation, set targets for the future, monitor progress, know what others are doing and to apply resources wisely and this is the reason the District Data books will be so valuable.

The District Data Books are a major step towards full transparency and towards informed planning and decision-making. They provide all available data at District, Khan, Commune and Sangkat level in easily accessible formats, in Khmer and English, through over 16,000 printed copies, CD-ROMs and the NCDD website.

This is the first time in Cambodia (and possibly in South East Asia) that such detailed information is made so widely available and NCDD should be commended for the hard work that has gone into this. We also thank the Ministry of Planning, which provided the detailed data of the Commune Data Base, the sectoral ministries and provincial authorities who contributed data and the Development Partners who provided financial support.

It is our sincere hope that the publication of the District Data Books will strengthen capacities, especially at district levels, for evidence-based development planning. We also hope that this information will deepen the understanding among Ministries, Provincial Authorities, Development Partners, NGOs and research agencies of the realities at commune and district levels.

We call upon all to use and distribute this information, complement or correct where appropriate and to contribute new data in the years to come.

**Sar KHENG**

Deputy Prime Minister, Minister of Interior and Chairman of NCDD

# Introduction

## Purpose

The purpose of the District Data Books is to bring together information on any aspect of life and development of Districts, Khans, Communes and Sangkat, together and make this widely available. The primary targets are the newly elected District Councilors, district level line departments, provincial agencies, Development Partners and NGOs operating at this level. They need detailed knowledge on current living conditions, natural resources, infrastructure, agriculture and other economic activities, current service levels, past and planned projects and available resources.

While much information exists on many of the above aspects, it is often hard to access that information and much is lost to reports, databases and statistics that are not widely shared. Data are often only available in one language and often out-of-date, and many reports cover only one sector or region.

We found that these problems are especially acute at the district level. Now that Districts are becoming a much more significant level of local government and development planning, there is an urgent need for wide-ranging data to be used for setting base-lines, planning and prioritizing, monitoring and learning.

## Approach

We have attempted to identify and compile all available statistics, reports, maps and other data at district and/or commune level. From this we have selected information that is available for all or most districts, reasonably reliable and up-to-date, sufficiently detailed and of possible interest to development planners, decision makers, agencies and citizens.

The major sources of the information in these District Data Books are:

- a) The Commune Data Base information over the years 2006 to 2009 (the most recent data were collected late last 2008), as compiled by the Ministry of Planning
- b) Detailed information directly collected from the Ministry of Health, the Ministry of Education, Youth and Sports and (for maps) the Ministry of Land Management, Urban Planning and Construction
- c) The Project Information Database (PID) at NCDD (up-to-date)
- d) The Commune Development and Planning Database (CDPD) (up to date)
- e) The District Information System (DIS) (updated per Mid 2009)
- f) Direct data collection at provincial and district level on private sector, irrigation, roads, and electricity, through provincial agencies
- g) Medical data collected from MEDiCAM
- h) The ID Poor Project – for poverty data on a number of provinces and districts
- i) NCDD's work on predictive poverty rates
- j) Specific projects for outputs, plans and budgets (Seth Koma, RILGP, RPRP and ICC)

## Limitations of the data

We are fully aware that the data we collected are not always complete, consistent or correct. While we have rejected information that was wrong or very incomplete, we decided not to aim for statistical and scientific perfection, but to include information that is useful, relevant

and comprehensive. We also accepted different sources for the same data as this may encourage discussion on the quality of the respective data.

We strongly encourage anyone who notes errors or incompleteness in these data to contact us and to share their data. We hope that the next round of producing such District Data Books can draw on wider sources and more complete data.

We encourage the District Administrations, who receive these data also in digital format, not only to use these for their planning and monitoring, but also to start correcting and updating these data and to share new data with NCDD for future use.

## Contents

The information in the following pages is organized in five sections:

- a) **Geographical data:** this section provides maps on infrastructure and administration and on land use and natural resources management. These maps are also provided in large format to all Districts and Khans.
- b) **District Profile:** this presents wide ranging data, covering 2006 – 2009, at district and commune level, extracted from the Commune Data Base, but edited for better understanding.
- c) **Plans and Projects:** this section presents development priorities determined by Commune and Sangkat Councils, Temporary Agreements, outputs and expenditure of major projects at Commune and District level over 2006 – 2008 and plans and budgets for 2009.
- d) **Services and Organizations:** this section provides details on key infrastructure (roads, electricity, irrigation systems) and services in health and education at district and commune level. It also provides an inventory of resources at the District Administration, NGOs operating in the district and private sector agencies active in the district.
- e) **Poverty Data:** this section provides predicted poverty rates for 2009 for all districts and communes and detailed poverty data compiled and processed by the ID Poor project for those that have been covered by this project.

## The future

It is our hope that this is the start of a longer-term process. We hope that a next edition of these District Data Books will offer more comprehensive, correct and up-to-date information. We hope that the District Administrations will not only start using this information, but also improve and update it. For this they are all provided with the full data set in digital format.

We invite agencies, projects and experts to send reports, statistics and maps that could be used for a next version to us and we invite all users of the District Data Books to inform us about errors, updates and inconsistencies. Please contact us through [info@ncdd.gov.kh](mailto:info@ncdd.gov.kh)

We now invite you to browse through this data book. You may open this randomly or use the table of contents and go to the aspects that have your special interest.

We hope that you will be informed, surprised and assisted. We hope, above all, that this information will lead to a deeper understanding of causes and effects of poverty, to purposeful decisions on how to tackle those causes and to greater transparency in using scarce resources for the benefit of all.

Martin de Graaf  
Program Advisor, PSDD/NCD



## **SECTION A: GEOGRAPHY**



# **1 Administration and Infrastructure**

Please see separate folder containing A3 maps.



## **2 Land Use and Natural Resources**

Please see separate folder containing A3 maps



### 3 Geography

#### 3.1 Land Area

Total Land Area (ha)	Forest Land Area (ha)		Cultivation Land Area (ha)	Construction Land Area (ha)	Other Land Area (ha)
	Total	Flooded Forest Area			
95800	82950	0	11000	1850	0

#### 3.2 Distances between Offices

Location	Distance (Km)
From District Office to C/S Office of Chrouy Neang Nguon	3.5
From District Office to C/S Office of Klang Hay	5.5
From District Office to C/S Office of Tram Sasar	9.5
From District Office to C/S Office of Moung	12
From District Office to C/S Office of Prei	7.5
From District Office to C/S Office of Slaeng Spean	10





## **SECTION B: DISTRICT PROFILE<sup>1</sup>**

---

<sup>1</sup> All data in this section come from the Commune Database (CDB) unless otherwise specified. These include primarily new CDB data, collected late 2008, and some data from earlier years. Please note that percentages are rounded to the nearest whole number.



# 1 General Information

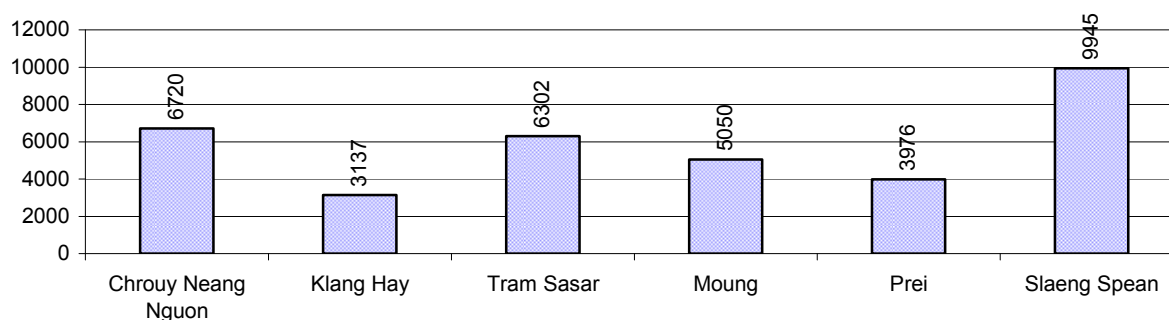
## 1.1 Population of the District

### 1.1.1 Total Population

Number of families	2005	2006	2007	2008
Total number of families	5,827 families	6,045 families	6,224 families	6,476 families
Increase (+)/Decrease (-) in nr of families		4%	3%	4%
Total population	32,004 pers	32,347 pers	35,330 pers	35,130 pers
Increase (+)/Decrease (-) in nr of people		1%	9%	-1%
Number of female Headed Households (HH)	961 families	764 families	837 families	877 families

**Note:** Percentages of population and increase/decrease are calculated on basis of the previous year. A negative sign in front of the percentage indicates a decrease in population.

### 1.1.2 Population, by Commune, in 2008



### 1.1.3 Population, by Age Group, over 3 years

Population by age group	2006	2007	2008	
	%	%	%	Number
<b>Age 0-5 years (as percentage of the population)</b>	14%	14%	14%	4,803 persons
Male 0-5 yrs	51%	52%	51%	2,458 persons
Female 0-5 yrs	49%	48%	49%	2,345 persons
<b>Age 6-17 (as percentage of the population)</b>	32%	32%	32%	11,131 persons
Male 6-17 yrs	51%	52%	51%	5,651 persons
Female 6-17 yrs	49%	48%	49%	5,480 persons
<b>Age 18-60 (as percentage of the population)</b>	51%	51%	51%	17,840 persons
Male 18-60 yrs	48%	50%	49%	8,699 persons
Female 18-60 yrs	52%	50%	51%	9,141 persons
<b>Age 61 above (as percentage of the population)</b>	3%	3%	4%	1,356 persons
Male 61	41%	45%	40%	543 persons
Female 61	59%	55%	60%	813 persons

**Note:** The overall percentage for each age group is calculated on the basis of the total population. The gender distribution of each group is calculated on the basis of the population within that particular age group.

## 1.2 Occupations

### 1.2.1 Percentage of families with a particular Occupation over 3 years

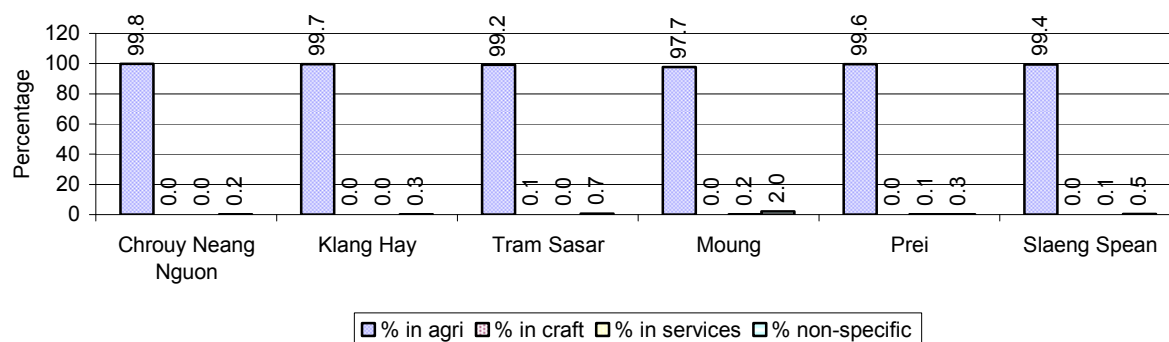
*This table shows the percentage of the population who have a particular occupation (job), for example the percentage of the population in the district who are rice farmers, furniture crafter, trader, etc.*

Description	2006	2007	2008	
	%	%	%	Number
<b>Families whose main occupation is agriculture</b>	100%	99%	99%	6,431 Families
Families whose primary occupation is rice farming	100%	97%	98%	6,358 Families
Families whose primary occupation is cultivating long-term crops	0%	1%	0%	0 Families
Families whose primary occupation is cultivating short-term crops	0%	2%	1%	73 Families
Families whose primary occupation is cultivating vegetable	0%	0%	0%	0 Families
Families whose primary occupation is fisherman	0%	0%	0%	0 Families
Families whose primary occupation is livestock farmer	0%	0%	0%	0 Families
Families whose primary occupation is NTFP collection	0%	0%	0%	0 Families
<b>Families whose main occupation is craft work</b>	0%	0%	0%	1 Families
Families, whose main occupation is in furniture craft, wooden, rattan, vine, bamboo	0%	0%	0%	1 Families
Families whose main occupation is in metal, aluminum, glass goods production	0%	0%	0%	0 Families
Families whose main occupation is food production	0%	0%	0%	0 Families
Families whose main occupation is tire, plastics and rubber goods production	0%	0%	0%	0 Families
Families whose main occupation is textile, clothing goods production	0%	0%	0%	0 Families
Families whose main occupation is in other production, not listed above	0%	0%	0%	0 Families
<b>Families whose main occupation is services</b>	0%	0%	0%	4 Families
Families whose main occupation is trade	0%	0%	0%	2 Families
Families whose main occupation is repair	0%	0%	0%	1 Families
Families whose main occupation is providing transport services	0%	0%	0%	1 Families
Families whose main occupation is providing other services	0%	0%	0%	0 Families
Families whose main occupation is not clear (or multi)	0%	0%	1%	40 Families

**Note:** The occupation percentages are calculated on the basis of the total number of families.

### 1.2.2 Percentage Families that work in one of four occupational sectors, by Commune in 2008

This table indicates the percentage of families involved in one of four occupation types: agriculture, craft, services or non-specific (other). Please note agriculture includes forestry activities such as cutting down trees and gathering gum from the trees.



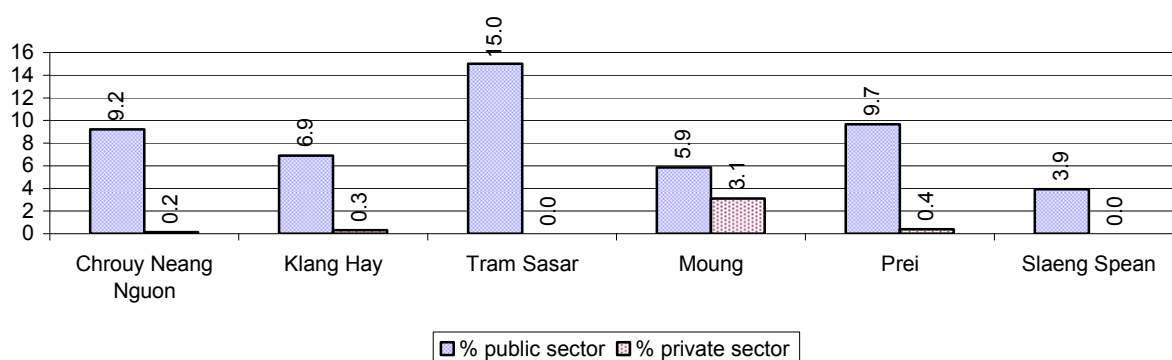
**Note:** Calculated on the basis of the total number of families within a commune.

### 1.2.3 Percentage of Families with public Sector, private Sector or uncertain Jobs, over 3 years

Description	2006	2007	2008	
	%	%	%	Number
Families that have a family member who is a government official, staff or worker	7%	7%	8%	526 families
Families that have a family member who is a private sector staff or worker	0%	0%	1%	33 families
Number of people aged 18-60 with uncertain/irregular jobs	9%	13%	3%	452 persons

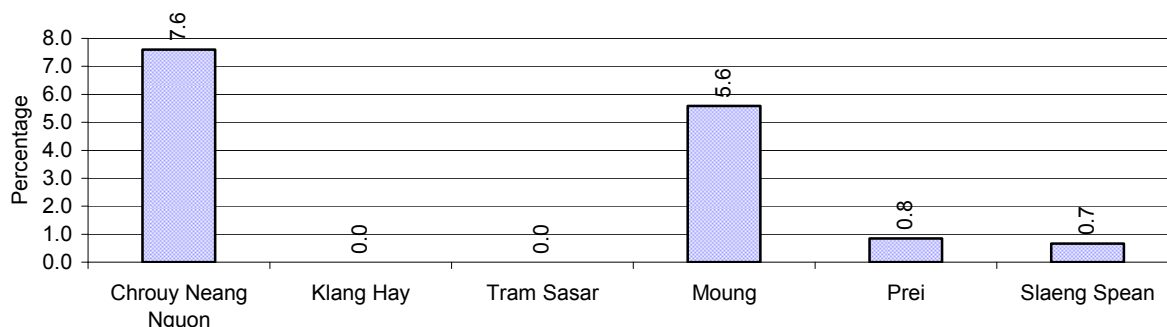
**Note:** In the first two rows percentages are calculated on the basis of the total number of families. In the third row the percentage is calculated on the basis of the total number of people aged 18-60 years.

### 1.2.4 Percentage of Families with public or private Sector Jobs, by Commune in 2008



**Note:** Calculated on the basis of the total number of families in the commune

### 1.2.5 Percentage of People aged 18-60 years with uncertain/irregular Jobs, by Commune, in 2008.



## 1.3 Property

### 1.3.1 Housing types and facilities over 3 years

This table shows the percentage of people living in a certain type of house. It also indicates how many houses have electricity or battery powered lights and how many have TV.

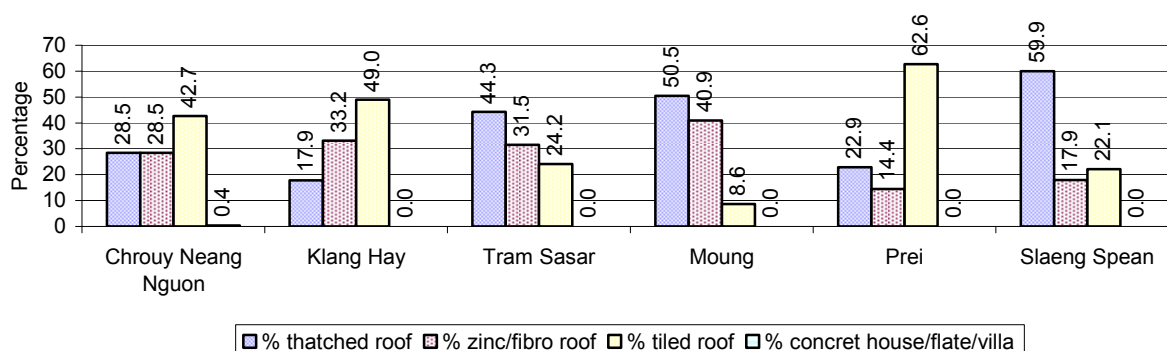
House Type	2006	2007	2008	
	%	%	%	Number
House with thatched roof	46 %	43 %	41 %	2,599 houses
House with zinc/fibro roof	24 %	25 %	26 %	1,673 houses
House with tiled roof	31 %	31 %	32 %	2,042 houses
Flats/apartments (with many families living)	0 %	0 %	0 %	0 houses
Concrete house or flat (with one family living)	0 %	0 %	0 %	5 houses
Villa house	0 %	0 %	0 %	0 houses
Houses with electricity	1 %	1 %	1 %	77 houses
Houses with battery light	25 %	25 %	46 %	2,903 houses
Houses with TV	27 %	29 %	32 %	2,027 houses

**Note:** Calculated against the total number of houses

### 1.3.2 Families living on public Land or without a permanent House

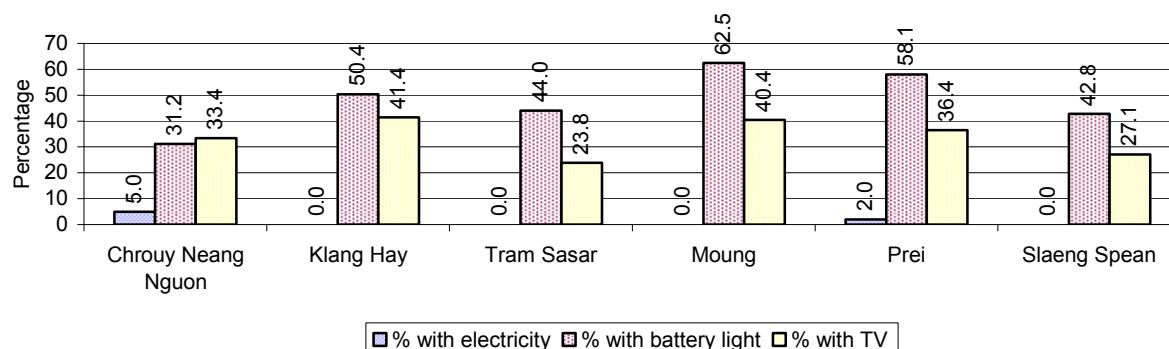
Living situation	2006	2007	2008
Families living in a house on public land	19 families	7 families	1 families
People, without permanent housing	13 person(s)	8 person(s)	11 person(s)

### 1.3.3 Percentage of Population living in a particular type of House, by Commune, in 2008



**Note:** Calculated against the total number of houses in each commune

### 1.3.4 Percentage of Houses with Electricity, Battery Lights and/or TVs, by Commune, in 2008



**Note:** Calculated against the total number of houses in each commune

### 1.3.5 Types of Vehicles and their ratio to Families across 3 years

This table shows the number of families per vehicle in the district. The last column shows the total number of each type of vehicle in the district for 2008.

Description	2006 ratio	2007 ratio	2008	
			Ratio	Number
Bicycle and bicycle with trailer	2	2	1	4,332
Ox-carts and horse-carts	2	2	2	3,026
Motorbike/with trailer	8	6	5	1,314
Motor tri-cycle	1,511	N/A	N/A	0
Large Transportation				
<b>Total number of cars/trucks</b>	141	130	249	26
Locally made vehicles	336	479	925	7
Trucks for goods transport	465	366	648	10
Buses/mini buses for passengers	N/A	N/A	N/A	0
Family cars	504	346	720	9
Agriculture machinery				
Tractors used for plowing	N/A	N/A	2,159	3
Power-tillage used for plowing	14	10	8	832
Other type of machinery				
Other type of machinery	N/A	692	N/A	0
Water transportation				
Row boats	32	34	36	179
<b>Total number of motor boats</b>	6,045	6,224	6,476	1
Motor boats used for fishing	6,045	6,224	6,476	1
Motor boats used for passengers	N/A	N/A	N/A	0
Motor boats used for goods transporting	N/A	N/A	N/A	0

**Note:** Ratio of families to a particular type of vehicle is the result of the total number of families divided by total number of that type of vehicle. Other types of vehicles, such as bulldozer, excavator, rollers etc. are not listed.

## 2 Infrastructure and Economy

### 2.1 Roads in meters over 3 years

Description	2006	2007	2008
Bituminous road	0 m	0 m	0 m
DBST, Macadam road	0 m	0 m	0 m
Concrete road	0 m	0 m	0 m
Laterite road	25,419 m	22,275 m	32,521 m
Constructed earth road	150,287 m	41,820 m	47,339 m
Un-constructed earth road	56,900 m	44,200 m	18,900 m

### 2.2 Sewerage Pipes in meters over 3 years

Description	Sewage pipe length		
	2006	2007	2008
Total length of sewage pipe, diameter 30-50 cm	0 m	0 m	0 m
Length of newly constructed sewage pipe, diameter 30-50 cm	0 m	4 m	0 m
Length of sewage pipe, diameter 30-50 cm needs repair/rehabilitation	0 m	0 m	0 m
Total length of sewage pipe, diameter of pipe 60-100 cm	0 m	18 m	23 m
Length of newly constructed sewage pipe, diameter 60-100 cm	0 m	4 m	14 m
Length of sewage pipe, diameter 60-100 cm needs repair/rehabilitation	0 m	4 m	4 m
Sewage pipe, diameter of pipe over 100 cm	0 m	4 m	4 m
Length of newly constructed sewage pipe, diameter over 100 cm	0 m	4 m	4 m
Length of sewage pipe, diameter over 100 cm needs repair/rehabilitation	0 m	4 m	4 m

### 2.3 Drainage and Bridges

Construction Type	2006		2007		2008	
	place(s)	Length	place(s)	Length	place(s)	Length
Single pipe culvert	102	225m	71	261 m	98	396 m
Double-pipe culvert	34	37m	45	218 m	47	228 m
Box pipe culvert	15	38m	15	146m	17	154 m
Wooden bridge	3	50m	4	60m	3	60 m
Concrete bridge	6	26m	5	65m	5	65 m
Bale bridge	0	0m	0	0m	0	0 m
Spillway construction	2	50m	5	78m	3	78 m

### 2.4 Services in the District

Descriptions	Number of places by year		
	2006	2007	2008
<b>Public</b>			
Electricity generating stations	1	1	2
Health clinics	0	0	0
<b>Private</b>			
Bicycle and motorcycle repair places	22	22	10
Agricultural machinery, tools and equipment repair places	4	1	0
Electronic tool repair places	2	6	4
Battery-charging services	34	32	39



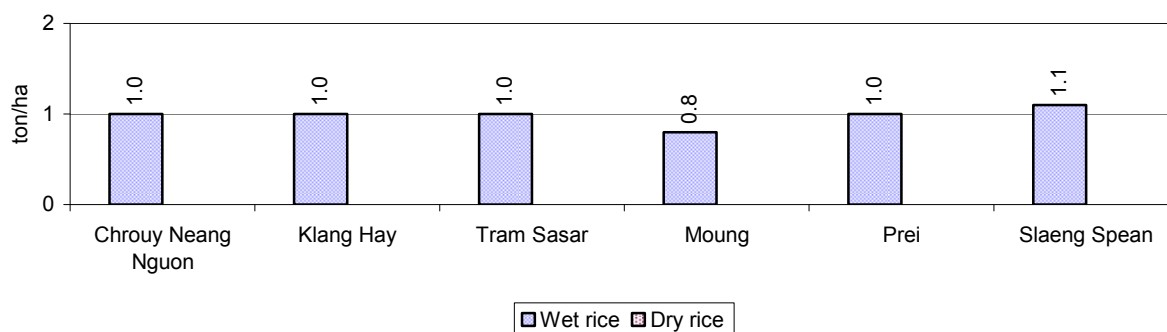
Descriptions	Number of places by year		
	2006	2007	2008
Handicraft places, wooden furniture and forest by-products	3	2	2
Other handicraft places (excluding furniture)	3	0	0
Small-scale services (hairstresser, phone service, massage, Karaoke, etc)	6	3	6
Small-scale food shop businesses (Food, groceries, drink shop, etc)	5	2	2
Small-scale rice mills	289	298	304
Medium or large-scale rice mills	12	12	14
Small-scale markets	0	0	0
Large-scale market	0	0	0
Alcohol refinery places	7	21	21
Pharmacies and small drug stores	4	1	1
Hotels	0	0	0
Guest houses	0	0	0
Restaurants	0	0	0
Gasoline stations	1	1	1

## 2.5 Agriculture

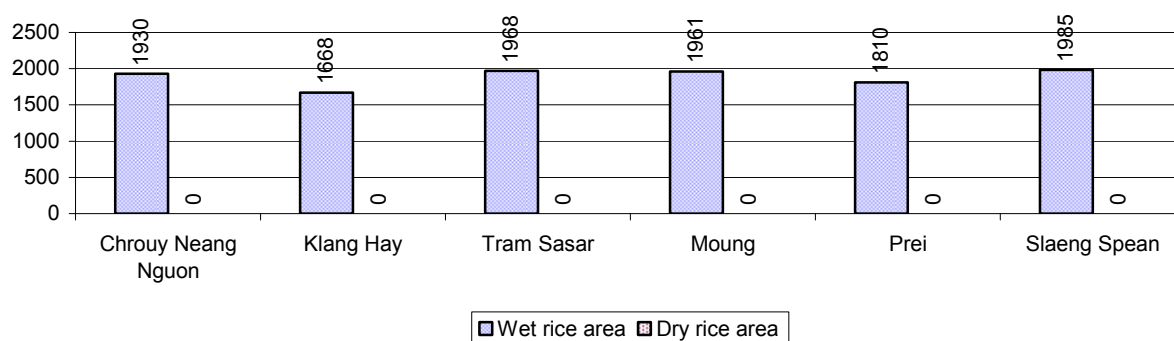
### 2.5.1 Rice cultivation in the District over 3 years

Description	2006	2007	2008
Total dry rice land area	0 ha	0 ha	0 ha
Actual dry rice cultivation area	0 ha	0 ha	0 ha
% actual cultivation to total land	-%	-%	-%
Total dry rice production	- tonne(s)	- tonne(s)	- tonne(s)
Average dry rice yield	- tonne(s)/ha	- tonne(s)/ha	- tonne(s)/ha
Total wet rice land area	10,744 ha	10,713 ha	11,485 ha
Actual wet rice cultivation area	10,708 ha	10,735 ha	11,322 ha
% actual cultivation to total land	100 %	100%	99%
Total wet rice production	10,529.53 tonne(s)	7,156.67 tonne(s)	11,133.30 tonne(s)
Average wet rice yield	1.0 tonne(s)/ha	0.7 tonne(s)/ha	1.0 tonne(s)/ha
Total intensive rice land area	0 ha	0 ha	0 ha
Actual intensive rice cultivation area	- ha	- ha	- ha
Average intensive rice yield	- tonne(s)/ha	- tonne(s)/ha	- tonne(s)/ha
Actual upland rice cultivation area	66 ha	75 ha	130 ha
Total upland rice production	89 tonne(s)	23 tonne(s)	81 tonne(s)
Average upland rice yield	1.4 tonne(s)/ha	0.3 tonne(s)/ha	0.6 tonne(s)/ha

## 2.5.2 Estimated wet and dry Season Rice Yield in tonne(s)/Ha, by Commune, in 2008



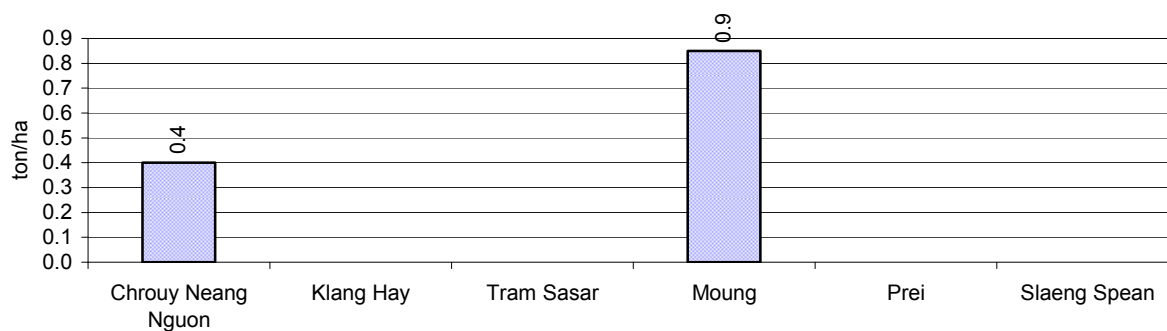
## 2.5.3 Cultivated wet and dry Season Rice areas in Ha, by Commune, in 2008



## 2.5.4 Estimated intensive Rice Yields in tonnes/Ha, by Commune, for 2008

There were no estimated intensive rice yields in this District in 2008

## 2.5.5 Estimated upland Rice Yield in tonnes/Ha, by Commune, for 2008

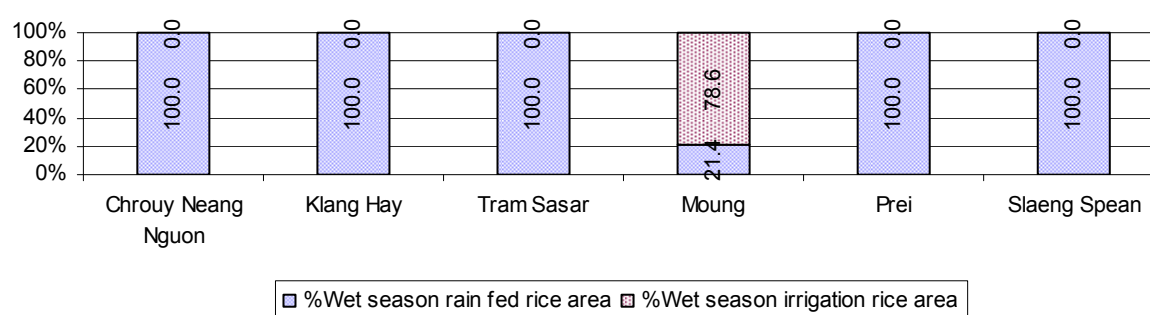


### 2.5.6 Wet season Rice irrigation across 3 years

Description		2006 %	2007 %	2008	
				%	Number
Total area of wet season rain fed rice land		100%	100%	86 %	9,781 ha
Percentage of wet season rice land that is irrigated; and for 2008 area in Ha		0 %	0 %	14 %	1,541 ha
Where	Area irrigated from canal/dam	- %	- %	100 %	1,541 ha
	Area irrigated from river, stream, lake, natural pond	- %	- %	0 %	0 ha
	Area irrigated from drilled well	- %	- %	0 %	0 ha
	Area irrigated from dug pond	- %	- %	0 %	0 ha

### 2.5.7 Water sources for wet Season Rice Cultivation, by Commune, in 2008

This chart shows the percentage of wet season rice cultivation receiving water from rain (natural) and from irrigation.



### 2.5.8 Access to Irrigation

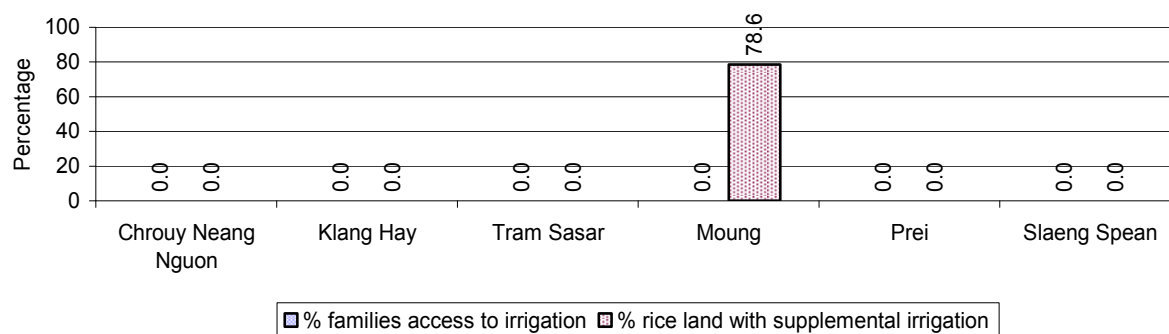
Description	2006 %	2007 %	2008	
			%	Number
Families who have access to irrigation water	0%	0%	0%	0 families
Families who have irrigation wells	0%	1%	0%	24 families

**Note:** Calculated against the total number of families are rice farmers

### 2.5.9 Number of Irrigation Wells over 3 years

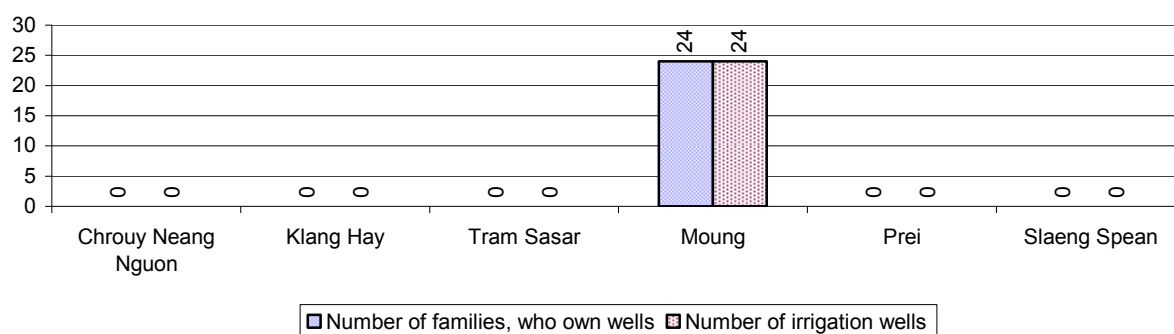
Description	2006	2007	2008
Number of irrigation wells	0 wells	32 wells	24 wells

### 2.5.10 Percentage of Families with access to (supplemental) Irrigation for wet Season Rice cultivation, by Commune, in 2008



**Note:** % of families, with access to irrigation is calculated against the total number of families, whose main occupation is rice farming. Irrigated wet rice land area is calculated against the total actual wet rice land cultivated areas

### 2.5.11 Irrigation Wells, by Commune, in 2008

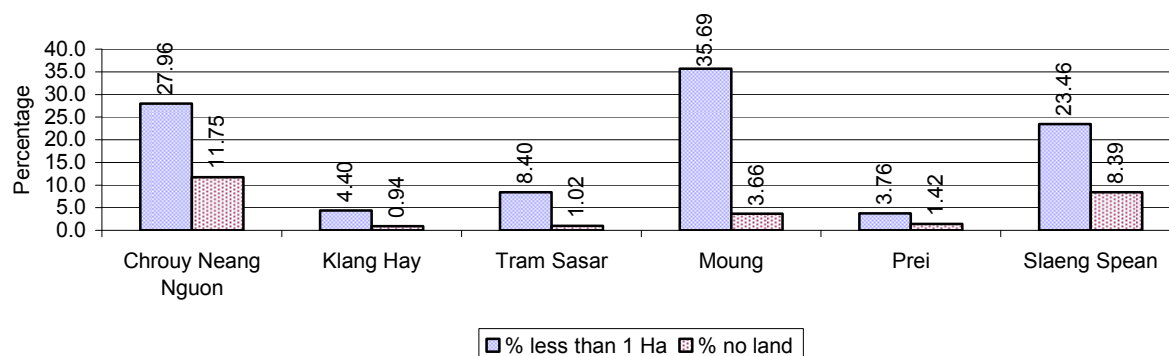


### 2.5.12 Farmers owning less than one hectare of Rice Land

Description	2006 %	2007 %	2008	
			%	Number
Families who have less than one hectare of rice land	16%	20%	19%	1,207 families
Families who do not own any rice land	3%	4%	6%	360 families

**Note:** Calculated on basis of total number of families who are rice farming

### 2.5.13 Percentage of Farmers with less than one Hectare or no Rice Land, by Commune, in 2008

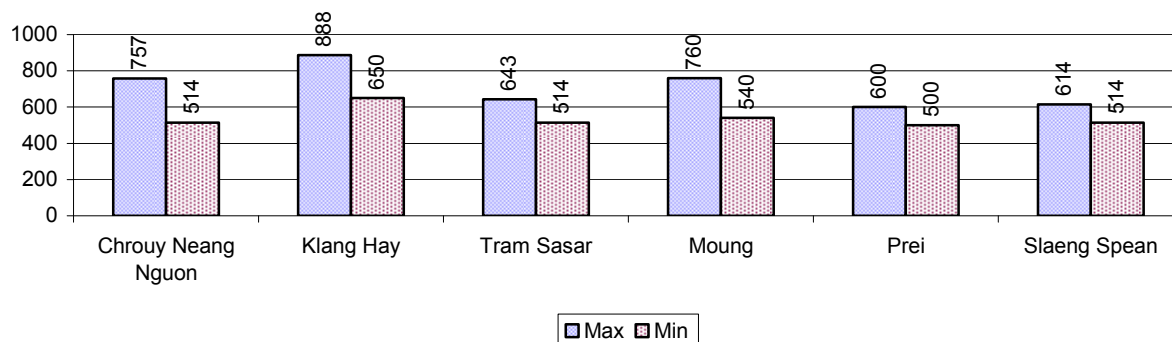


**Note:** Calculated on basis of total number of families who are rice farming

### 2.5.14 Average farm-gate Prices of Rice, over 3 years

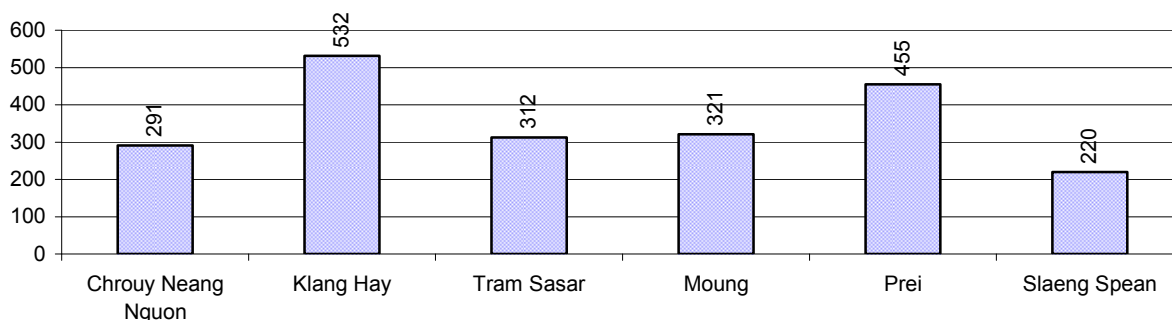
Description	2006	2007	2008
Maximum average farm gate price	471 Riels/Kg	607 Riels/Kg	710 Riels/Kg
Minimum average farm gate price	365 Riels/Kg	470 Riels/Kg	539 Riels/Kg
Average farm gate price	418 Riels/Kg	539 Riels/Kg	625 Riels/Kg
Average rice production per person	328 Kg/person	203 Kg/person	319 Kg/person

### 2.5.15 Minimum and maximum farm-gate Prices of Rice in Riel/kg, by Commune, in 2008



### 2.5.16 Production of Paddy in Kgs/Person, by Commune, in 2008

This table shows how much paddy (harvested rice) is produced in a year in a commune, in kgs per person.

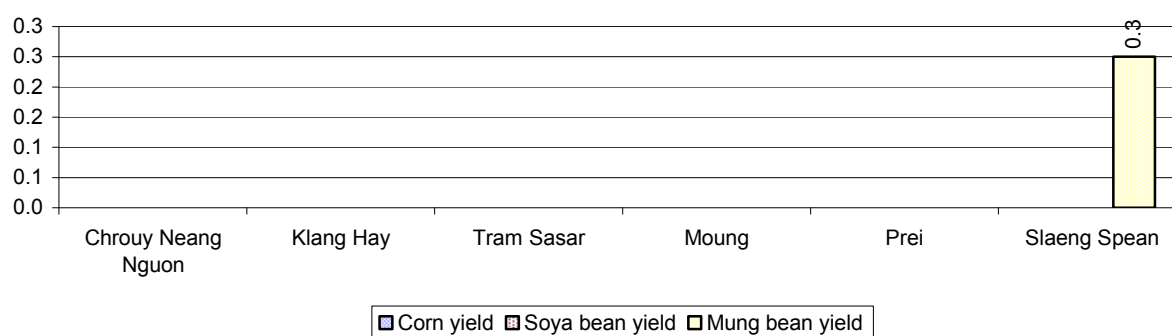


### 2.5.17 Production of other Crops, over 3 years

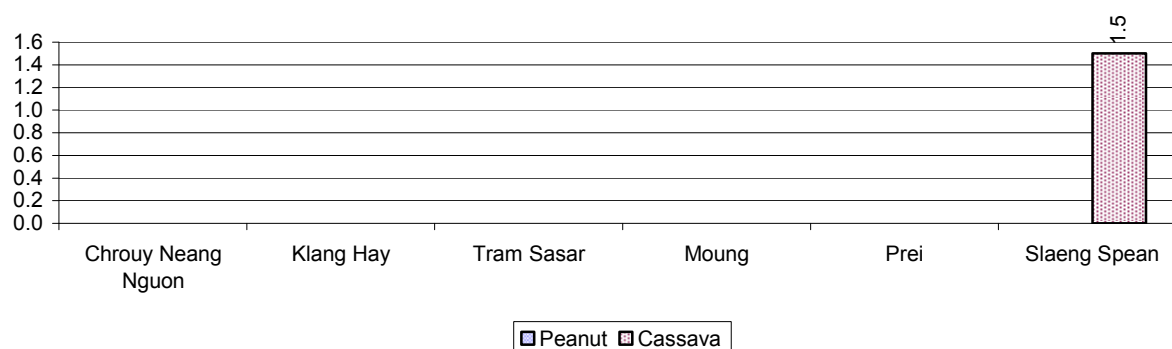
Crops	2006	2007	2008
Corn cultivation area	0 ha	0 ha	0 ha
Estimated corn yield	- tonne(s)/ha	- tonne(s)/ha	- tonne(s)/ha
Estimated corn production	- tonne(s)	- tonne(s)	- tonne(s)
Soya bean cultivation area	0 ha	0 ha	0 ha
Estimated Soya bean yield	- tonne(s)/ha	- tonne(s)/ha	- tonne(s)/ha
Estimated Soya bean production	- tonne(s)	- tonne(s)	- tonne(s)
Mungbean cultivation area	7 ha	5 ha	3 ha
Estimated Mungbean yield	0.2 tonne(s)/ha	0.2 tonne(s)/ha	0.3 tonne(s)/ha
Estimated Mungbean production	1 tonne(s)	1 tonne(s)	1 tonne(s)

Crops	2006	2007	2008
Peanut cultivation area	0 ha	0 ha	0 ha
Estimated Peanut yield	- tonne(s)/ha	- tonne(s)/ha	- tonne(s)/ha
Estimated Peanut production	- tonne(s)	- tonne(s)	- tonne(s)
Cassava cultivation area	0 ha	0 ha	3 ha
Estimated Cassava yield	- tonne(s)/ha	- tonne(s)/ha	1.5 tonne(s)/ha
Estimated Cassava production	- tonne(s)	- tonne(s)	4 tonne(s)
Sweet potatoes cultivation area	0 ha	0 ha	0 ha
Estimated Sweet potatoes yield	- tonne(s)/ha	- tonne(s)/ha	- tonne(s)/ha
Estimated Sweet potatoes production	- tonne(s)	- tonne(s)	- tonne(s)
Sesame cultivation area	3 ha	3 ha	0 ha
Estimated Sesame yield	0.1 tonne(s)/ha	0.1 tonne(s)/ha	- tonne(s)/ha
Estimated Sesame production	0 tonne(s)	0 tonne(s)	- tonne(s)

### 2.5.18 Yields of Corn, Soya beans and Mungbeans in tonne(s)/ha, by Commune, in 2008



### 2.5.19 Yields of Peanuts and Cassava in tonne(s)/ha by Commune, in 2008



### 2.5.20 Yields of Sweet Potatoes and Sesame in tonne(s)/ha, by Commune, in 2008

There were no yields for any of these crops in this District in 2008

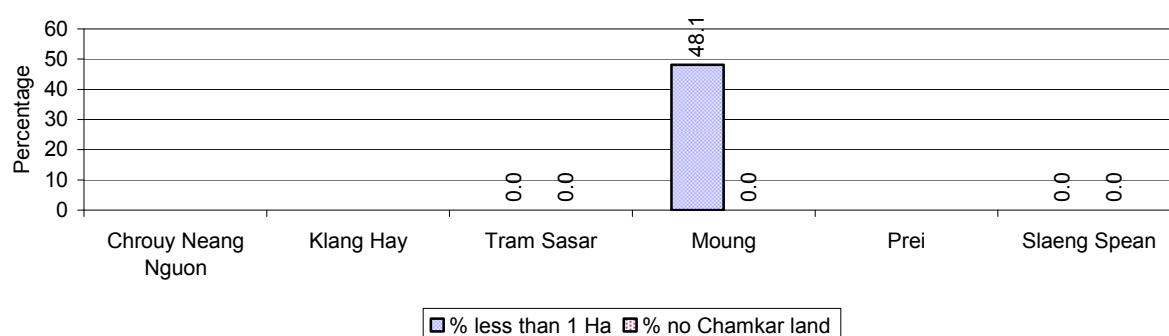
### 2.5.21 Percentage Farmers who own less than 1 Ha or no Chamkar land

Description	2006 %	2007 %	2008	
			%	Number
Families, who own less than 1ha of Chamkar land	-%	36%	34%	25 families
Families, with no Chamkar land	-%	36%	0%	0 families

**Note 1:** Calculated as a percentage of the total number of families whose main occupation is Chamkar (not rice) farming

**Note 2:** Chamkar land is no-rice land, i.e. other crops

### 2.5.22 Percentage Farmers owning less than 1 ha or no Chamkar land, by Commune, in 2008



**Note:** Percentage is calculated among families, who Chamkar farm as a main occupation, not the total population of the commune.

### 2.5.23 Percentage of Families raising Cattle/Buffalo, over 3 years

Description	2006 %	2007 %	2008	
			%	Number
Families raising cattle/buffalo	87%	81%	80%	5,184 families
Families raising cattle/buffalo as labor forces	73%	58%	60%	3,855 families

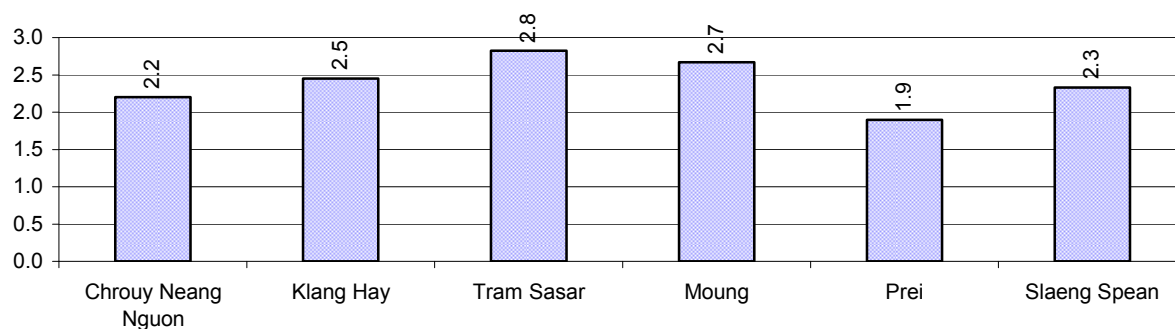
**Note:** Calculated against the total number of families.

### 2.5.24 Number of Cattle/buffalo being raised, over 3 years

Description	2006	2007	2008
Total number of cattle/buffalo	14,286 head(s)	13,592 head(s)	12,495 head(s)
Average cattle/buffalo per families	2.7 head(s)/families	2.7 head(s)/families	2 head(s)/families

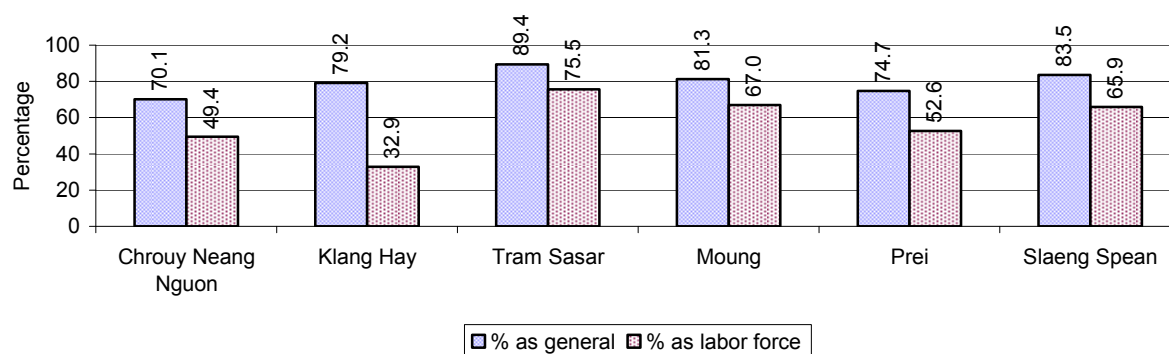
**Note:** Calculated by dividing total number of cattle/buffalo by total number of cattle/buffalo raising families

### 2.5.25 Average number of Cattle/Buffalo per Family, by Commune, in 2008



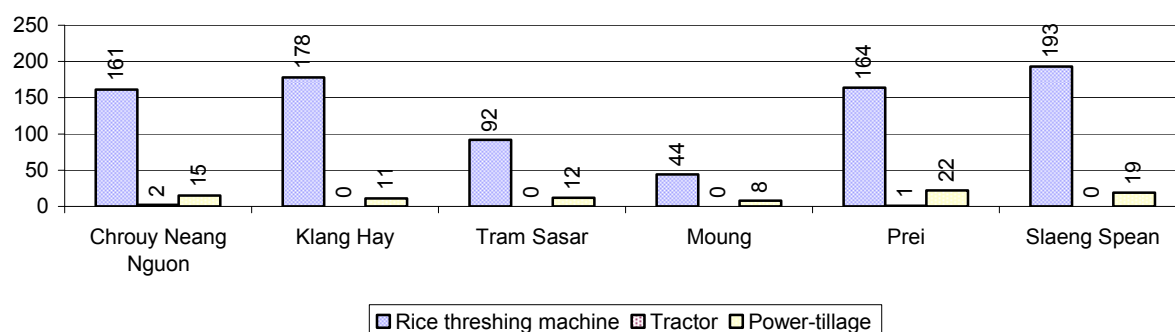
**Note:** Calculated by dividing total number of cattle/buffalo by total number of cattle/buffalo raising families

### 2.5.26 Percentage Families raising Cattle/Buffalo, for general and labor purposes in 2008, by Commune



**Note:** Calculated using the total number of families raising cattle/buffalo against the total number of families.

### 2.5.27 Type and number of agricultural Machines, by Commune, in 2008



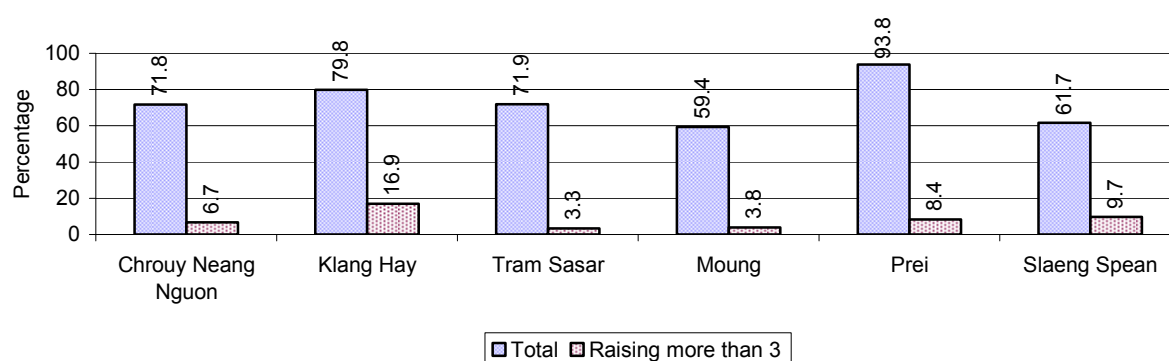


### 2.5.28 Livestock-producing Households over 3 years

Description	2006 %	2007 %	2008	
			%	Number
Total number of families raising pigs	85%	72%	71%	4,586 families
number of families raising more than 3 pigs	17%	12%	8%	505 families
Total number of families raising chickens	93%	88%	90%	5,807 families
number of families raising more than 3 chickens	70%	58%	64%	4,175 families
Total number of families raising ducks	27%	20%	23%	1,504 families
number of families raising more than 5 ducks	20%	15%	15%	987 families
Total number of families raising goats or sheep	0%	0%	0%	1 families
Total number of families raising horses	0%	0%	0%	2 families

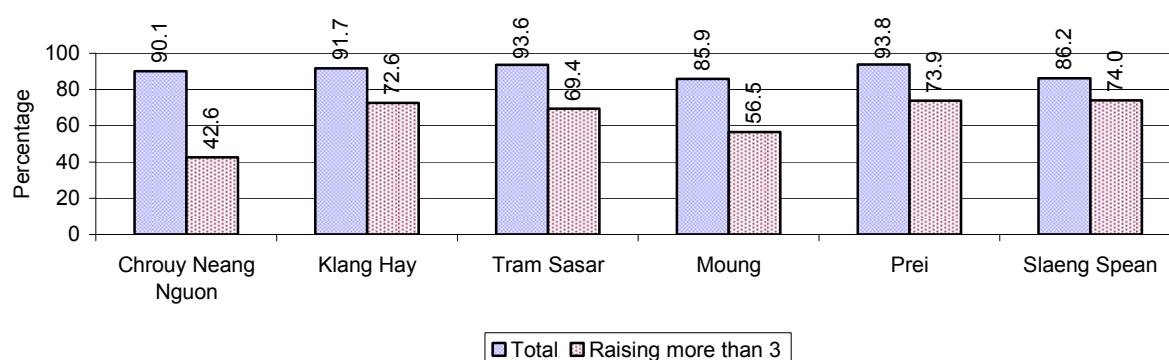
**Note:** Calculated against the total number of families

### 2.5.29 Percentage Families raising Pigs, by Commune, in 2008



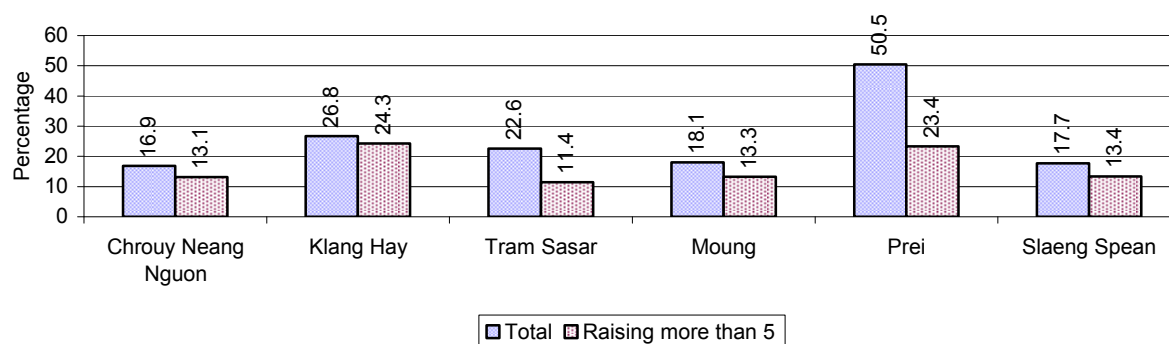
**Note:** Calculated against the total number of families in the commune

### 2.5.30 Percentage Families raising Chickens, by Commune, in 2008



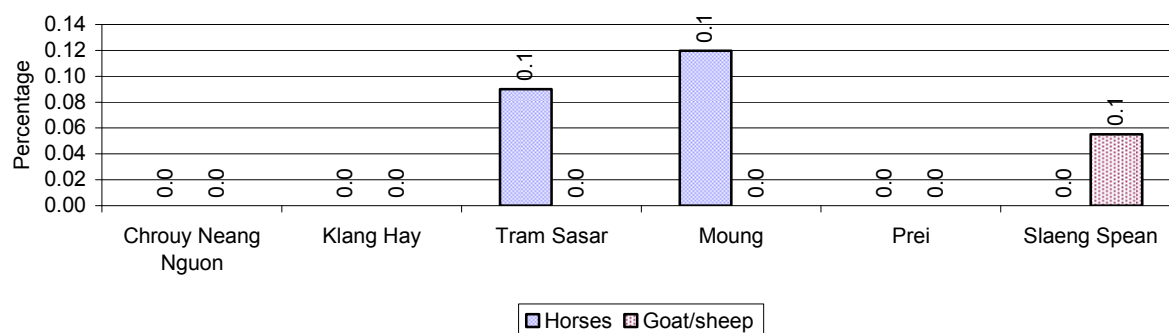
**Note:** Calculated against the total number of families in the commune

### 2.5.31 Percentage Families raising Ducks, by Commune, in 2008



**Note:** Calculated against the total number of families in the commune

### 2.5.32 Percentage Families raising Horses, Goats or Sheep, by Commune, in 2008



**Note:** Calculated against the total number of families in the commune

### 2.5.33 Livestock Farms over 3 years

Description	2006	2007	2008
Number of cattle/buffalo farms	0 farm(s)	0 farm(s)	0 farm(s)
Number of pig farms	0 farm(s)	0 farm(s)	0 farm(s)
Number of goat/sheep farms	0 farm(s)	0 farm(s)	0 farm(s)
Number of chicken farms	0 farm(s)	0 farm(s)	0 farm(s)
Number of duck farms	0 farm(s)	0 farm(s)	0 farm(s)

### 2.5.34 Number Livestock Farms, by Commune in 2008

There were no farms of this type in this District in 2008

**Note:** Number of farms are recorded by the village chief, not by counting number of livestock in each farm

### 2.5.35 Number Chicken and Duck Farms, by Commune, for 2008

There were no farms of this type in this District in 2008

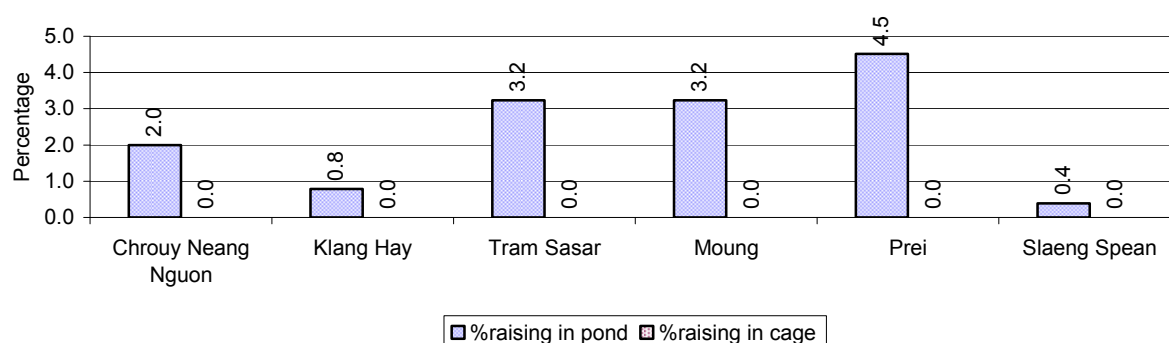
**Note:** Number of farm places recorded by village chief, not by counting number of livestock in each farm

### 2.5.36 Families raising Fish over 3 years

Description	2006	2007	2008
Total number of families raising fish	79 families	97 families	136 families
% families raising fish	1%	2%	2%
Number families raising fish in pond	79 families	93 families	136 families
% families raising fish in pond	1%	1 %	2%
Number fish pond	74 pond(s)	55 pond(s)	136 pond(s)
No. of ponds per family	0.9 pond/families	0.6 pond/families	1.0 pond/families
Number of families raising fish in cage	0 families	4 families	0 families
%families raising fish in cage	0 %	0 %	0%
Number of fish cage	0 cage(s)	4 cage(s)	0 cage(s)
No. of fish cage per family	- cage /families	1.0 cage /families	- cage /families

**Note:** % of families raising fish or fish in ponds or cages is calculated a percentage of the total number of families.

### 2.5.37 Percentage of Families raising Fish, by Commune, in 2008



**Note:** Calculated as a percentage of the total number of families in the commune.

### 2.5.38 Shrimp and Prawn Farming over 3 years

Description	2006	2007	2008
Number of families raising shrimps	0 families	0 families	0 families
% Families raising shrimps	0%	0%	0%
Number of shrimp ponds	0 pond	0 pond	0 pond
Total area raising shrimps	0 ha	0 ha	0 ha
Area per family	-ha/families	-ha/families	-ha/families
Number of families raising prawns	0 families	0 families	0 families
% families raising prawns	0%	0%	0%
Number prawn ponds	0 pond	0 pond	0 pond
Ponds per families	- pond/families	-pond/families	-pond/families
Number of prawn cages	0 cage	0 cage	0 cage
Cages per families	0 cage /families	0 cage /families	0 cage /families

**Note:** Percentage of families raising either prawns or shrimp is calculated against the number of families, who do aquaculture farming, NOT the total population.

### 2.5.39 Numbers of Families raising Shrimps and number of Shrimp Ponds, by Commune, in 2008

There were none of these in this District in 2008

### 2.5.40 Number of Families raising Prawn and Number of Prawn Ponds/Cages, by Commune, in 2008

There were none of these in this District in 2008

### 3 Social Aspects

#### 3.1 Education

##### 3.1.1 Kindergarten in the District over 3 years

Description	2006	2007	2008
Number of community kindergarten schools	0 school(s)	0 school(s)	0 school(s)
Number of community kindergarten class rooms	0 room(s)	0 room(s)	0 room(s)
Number of community kindergarten classes	0 class(es)	0 class(es)	0 class(es)
Number of community kindergarten teachers	0 person(s)	0 person(s)	0 person(s)
Number of women community kindergarten teachers	0 women	0 women	0 women
Number of state and private kindergarten schools	4 school(s)	6 school(s)	8 school(s)
Number of state and private kindergarten class rooms	4 room(s)	6 room(s)	8 room(s)
Number of state and private kindergarten classes	5 class(es)	6 class(es)	8 class(es)
Number of state and private kindergarten teachers	5 person(s)	8 person(s)	10 person(s)
Number of women state and private kindergarten teachers	5 women	8 women	10 women

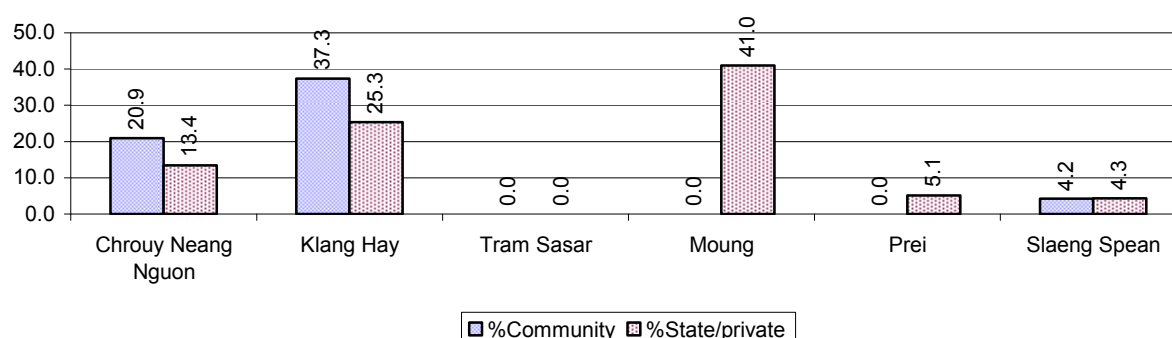
##### 3.1.2 Percentage enrolment at Kindergarten level over 3 years

*This table shows the percentage of the total 3-5 year old population attending kindergarten.*

Description	2006 %	2007 %	2008	
			%	Number
Total percentage of children, 3-5 yrs, go to kindergarten	10%	12%	20%	525 person(s)
Percentage of children, 3-5 yrs, go community kindergarten	10%	8%	8%	210 person(s)
Percentage children, 3-5 yrs, go state/private kindergarten	0%	4%	12%	315 person(s)

**Note:** Calculated against the total for that age group

##### 3.1.3 Percentage of Children 3-5 yrs attending Kindergarten, by Commune, in 2008



### 3.1.4 Basic Education over 3 years

#### Primary School

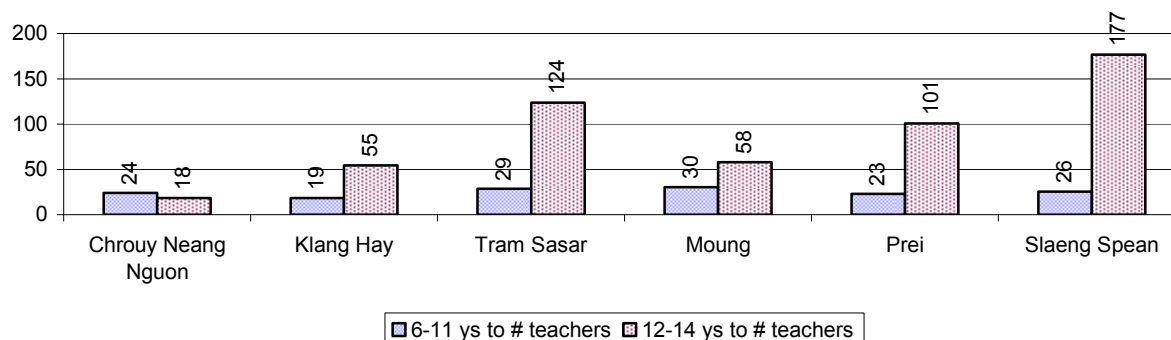
Description	2006	2007	2008
Number of primary schools	33 school(s)	31 school(s)	28 school(s)
Number of primary school rooms	127 room(s)	133 room(s)	145 room(s)
Number of primary classes	178 class(es)	181 class(es)	202 class(es)
Number of primary teachers	115 person(s)	167 person(s)	201 person(s)
Ratio of children 6-11 yrs to school	149	168	182
Ratio of children 6-11 yrs to school room	39	39	35
Ratio of children 6-11 yrs to class	28	29	25
Ratio of children 6-11 yrs to teacher	43	31	25

**Note:** According to education norm, children 6-11 yrs should attend primary school, while 12-14 yrs should be in lower secondary school, but in reality this varies.

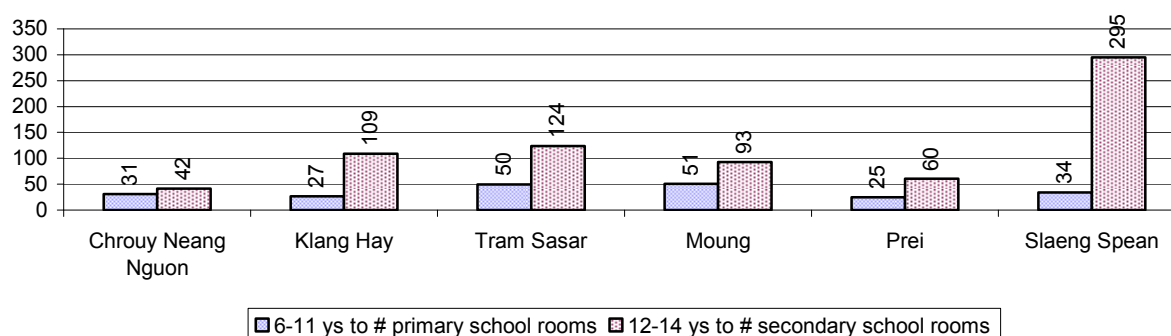
#### Lower Secondary School

Description	2006	2007	2008
Number of lower secondary schools	2 school(s)	3 school(s)	6 school(s)
Number of lower secondary school rooms	9 room(s)	14 room(s)	33 room(s)
Number of lower secondary classes	26 class(es)	30 class(es)	43 class(es)
Number of lower secondary teachers	29 person(s)	11 person(s)	56 person(s)
Ratio children 12-14 yrs to school	1,400	1,031	491
Ratio of children 12-14 yrs to school room	311	221	89
Ratio of children 12-14 yrs to class	108	103	69
Ratio of children 12-14 yrs to teacher	97	281	53

### 3.1.5 Ratio of 6-11 year old and 12-14 year old Children to number of Teachers, by Commune, in 2008



### 3.1.6 Ratio of 6-11 year old and 12-14 year old Children to number of School Rooms, by Commune, in 2008



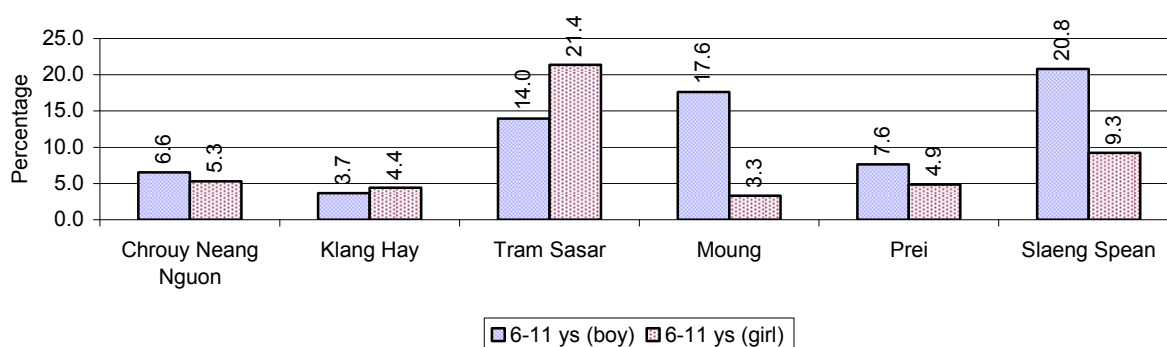
### 3.1.7 Enrolment status at Primary Level over 3 years

Description	2006 %	2007 %	2008	
			%	Number
Total children aged 6-11 years old	15%	15%	14%	5,093 person(s)
Total children aged 6-11 who are in school	88%	86%	89%	4,509 person(s)
Total children aged 6-11 who are not in school	12%	14%	11%	584 person(s)
Total girls aged 6-11 years old	15%	15%	14%	2,463 person(s)
Total girls aged 6-11 who are in school	87%	85%	91%	2,244 person(s)
Total girls aged 6-11 who are not in school	13%	15%	9%	219 person(s)
Total boys aged 6-11 years old	16%	15%	15%	2,630 person(s)
Total boys aged 6-11 who are in school	89%	86%	86%	2,265 person(s)
Total boys aged 6-11 who are not in school	11%	14%	14%	365 person(s)

**Note 1:** Percentage is calculated on the basis of the total number of children within 6-11 year age group for the first 3 rows and for the total girls and the total boys aged 6-11 yrs.

**Note 2:** Number of girls aged 6-11 who are in & not in school is calculated against the total number of girls aged 6-11 yrs. Number boys, 6-11 yrs who are in & not in school are calculated against the total number of boys aged 6-11 yrs.

### 3.1.8 Percentage of 6-11 year old Children not in School, by Commune, in 2008



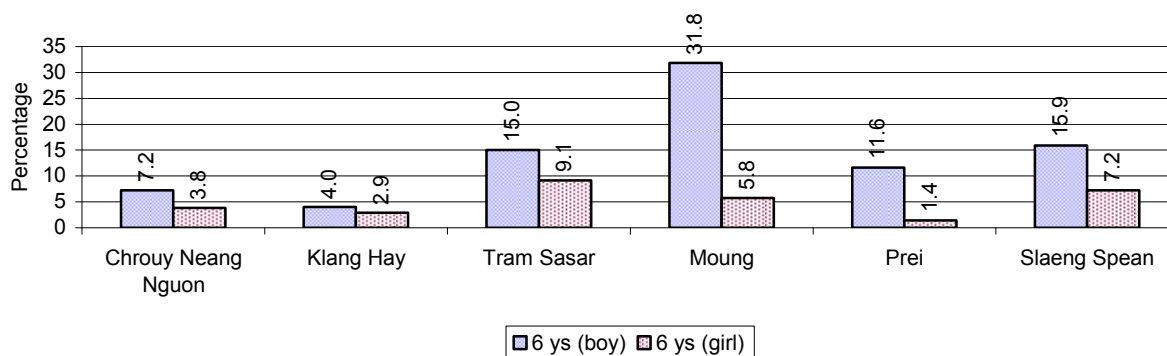
**Note:** calculated on the basis of the total number of children within 6-11 year age group in the commune.

### 3.1.9 Enrolment of 6 year old Children over 3 years

Description	2006 %	2007 %	2008	
			%	Number
Total % and number of children aged 6 years old	3%	3%	3%	1,030 person(s)
Total % of children aged 6 years old in school	89%	86%	86%	888 person(s)
Total % of children aged 6 years old not in school	11%	14%	14%	142 person(s)

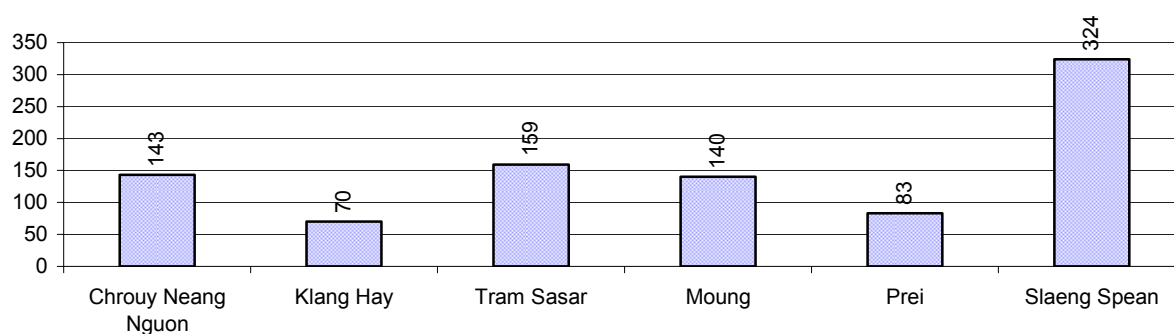
**Note:** First row calculated as a percentage of total population. Second and third row calculated as a percentage of the total number of 6 year olds.

### 3.1.10 Percentage of 6 year old Children not in School, by Commune, in 2008



**Note:** Calculated as a percentage of total 6 year old population

### 3.1.11 Number of 5 year old Children in each Commune in 2008

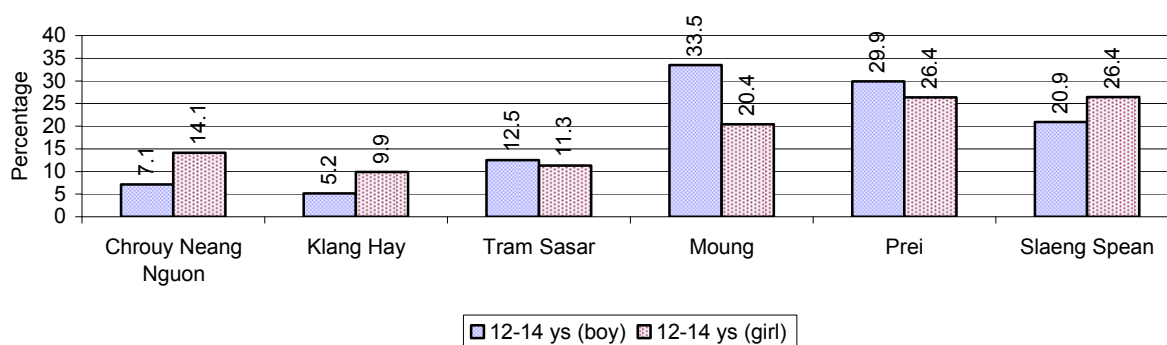


### 3.1.12 Enrolment at Lower Secondary Level over 3 years

Description	2006 %	2007 %	2008	
			%	Number
Total <b>children</b> aged 12-14 years old	9%	9%	8%	2,946 person(s)
Children aged 12-14 years old in school	85%	80%	81%	2,388 person(s)
Children aged 12-14 years old not in school	15%	20%	19%	558 person(s)
Total <b>girls</b> aged 12-14 years old	8%	8%	8%	1,444 person(s)
Girls aged 12-14 years old in school	84%	82%	81%	1,168 person(s)
Girls aged 12-14 years old not in school	16%	18%	19%	276 person(s)
Total <b>boys</b> aged 12-14 years old	9%	9%	9%	1,502 person(s)
Boys aged 12-14 years old in school	86%	79%	81%	1,220 person(s)
Boys aged 12-14 years old not in school	14%	21%	19%	282 person(s)

**Note:** Percentage is calculated on the basis of number of the total number of children within 12-14 yrs group, except for the first row of each section which is calculated on the basis of the total population.

### 3.1.13 Percentage of 12-14 year olds not in School, by Commune, in 2008



**Note:** Calculated as a percentage of the total 12-14 year old population in each commune

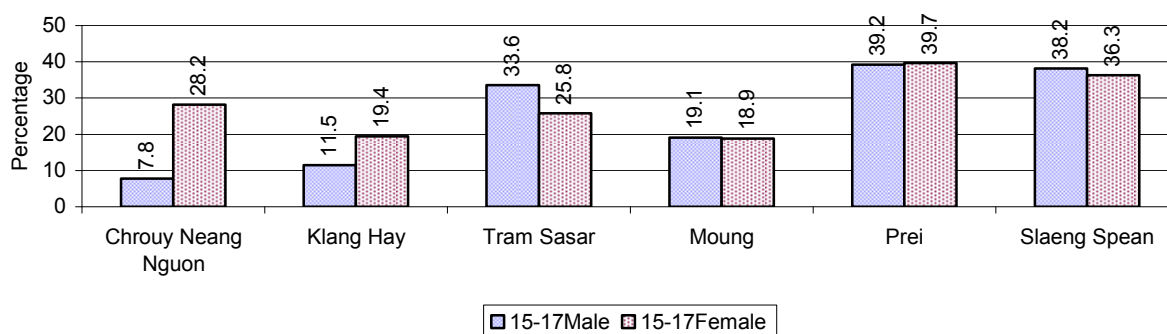
### 3.1.14 Upper Secondary Schools over 3 years

Description	2006	2007	2008
Number of upper secondary schools	0 school(s)	0 school(s)	0 school(s)
Number of upper secondary school rooms	0 room(s)	0 room(s)	0 room(s)
Number of upper secondary classes	0 class(es)	0 class(es)	0 class(es)
Number of upper secondary teachers	0 person(s)	0 person(s)	0 person(s)
Ratio of 15-17 yr olds to number of school	N/A	N/A	N/A
Ratio of 15-17 yr olds to number of school room	N/A	N/A	N/A
Ratio of 15-17 yr olds to number of classes	N/A	N/A	N/A
Ratio of 15-17 yr olds to number of teacher	N/A	N/A	N/A

### 3.1.15 Enrolment of 15-17 year old teenagers over 3 years

Description	2006	2007	2008
Number of teenage, 15-17 years old	2,634 person(s)	2,978 person(s)	3,092 person(s)
Number of teenage, 15-17 years old, who are not studying	766 person(s)	1,055 person(s)	846 person(s)
Percentage of teenage, 15-17 years old not studying	29%	35%	27%

### 3.1.16 Percentage of 15-17 year old Teenagers not at School, by Commune, in 2008

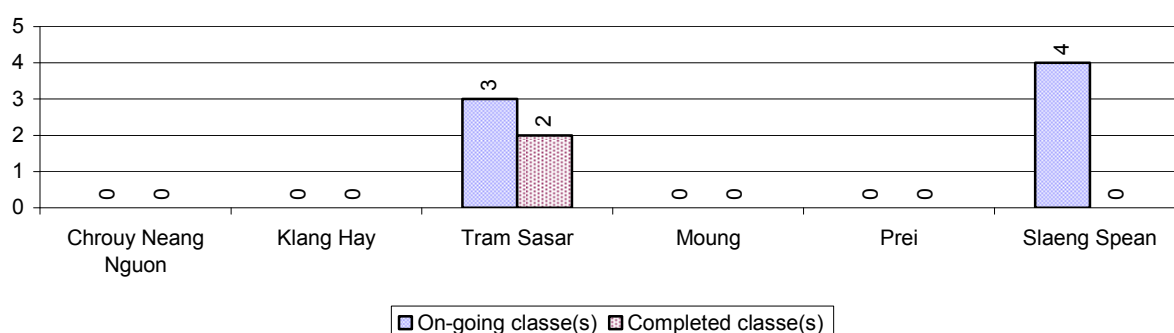




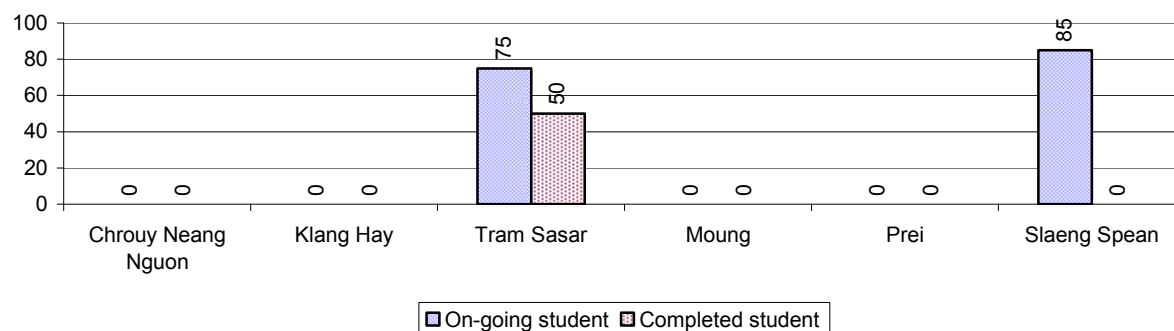
### 3.1.17 Literacy Classes as of 2008

Literacy classes	Organized by:		Other Program(s)	Total
	PDoEYS	NGOs		
Number of On-going literacy classes	7 class(es)	0 class(es)	0 class(es)	7 class(es)
Number of literacy students in on-going classes	160 person(s)	0 person(s)	0 person(s)	160 person(s)
Completed literacy class(es)	2 classes	0 classes	0 classes	2 classes
Number of literacy students that have completed literacy classes	50 person(s)	0 person(s)	0 person(s)	50 person(s)
Number of students that passed	45 person(s)	0 person(s)	0 person(s)	45 person(s)

### 3.1.18 Number of on-going and completed Literacy Classes, by Commune, in 2008



### 3.1.19 Students of on-going & completed Literacy Classes, by Commune, in 2008

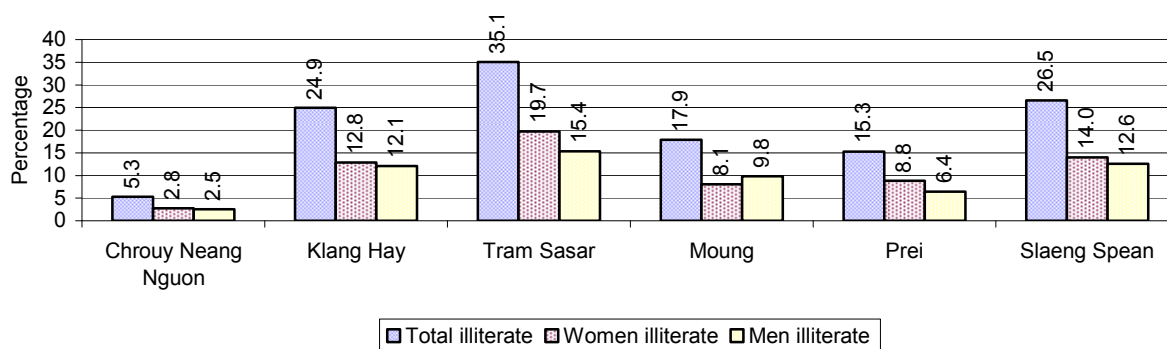


### 3.1.20 Percentage of illiterate People between 15-60, over 3 years

Illiteracy Status	2006 %	2007 %	2008	
			%	Number
Illiterate people, 15-60 years old	27%	27%	21%	4,441 person(s)
Illiterate females, 15-60 years old	15%	14%	11%	2,356 person(s)
Illiterate people, 15-17 years old	12%	15%	10%	324 person(s)
Illiterate females, 15-17 years old	6%	8%	6%	179 person(s)
Illiterate people, 18-24 years old	22%	20%	14%	745 person(s)
Illiterate females, 18-24 years old	12%	10%	8%	401 person(s)
Illiterate people, 25-60 years old	32%	32%	27%	3,372 person(s)
Illiterate females, 25-60 years old	18%	17%	14%	1,776 person(s)

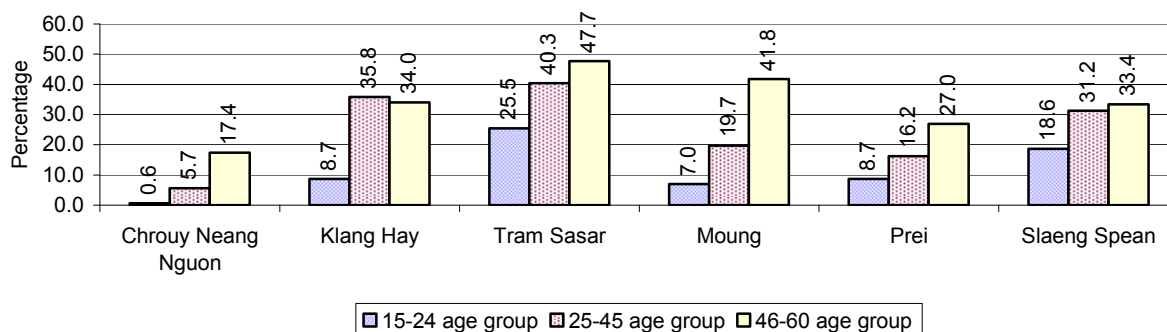
**Note:** Percentage is calculated on the basis of number of people in age group.

### 3.1.21 Percentage illiterate People among 15-60 yrs old, by Commune, in 2008



**Note:** Percentages are calculated on the basis of number of people in that age group.

### 3.1.22 Percentage illiterate People for 15-24 yrs, 25-45 yrs and 46-60 yrs, by Commune, in 2008



**Note:** Percentage of illiterate people in each age group is calculated on the basis of number of people in that age group.

## 3.2 Health

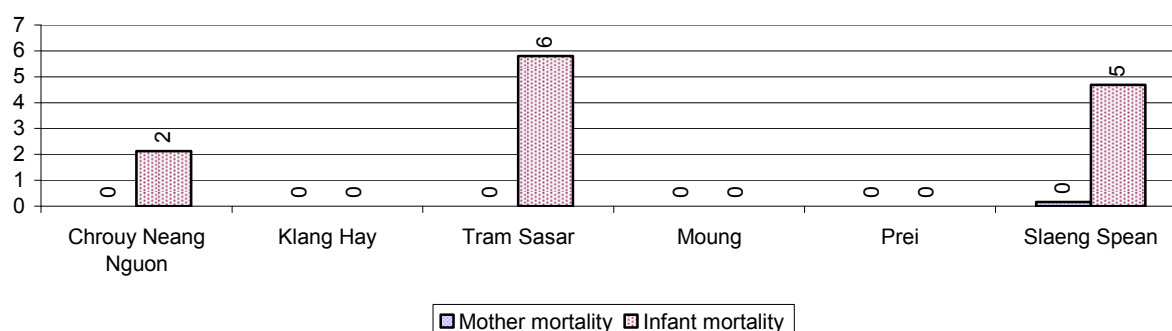
### 3.2.1 Health Situation of Women and Children, over 3 years

Description	2006	2007	2008
Number families with a birth during the year	458 families	546 families	490 families
Number of women who had their baby delivered by a TBA	361 person(s)	431 person(s)	304 person(s)
Percentage of women who had their baby delivered by a TBA	79 %	79 %	62 %
Number of women who had their baby delivered by a midwife	97 person(s)	115 person(s)	186 person(s)
Percentage of women had their baby delivered by a midwife	21 %	21 %	38 %
Number of mothers who died within 1 month of giving birth	14 person(s)	12 person(s)	2 person(s)
Mothers who died within 1 month of giving birth per 100,000 families having a delivery	3,057	2,198	408
Number of infants born during the year	458 person(s)	562 person(s)	556 person(s)
Number of Infants who died within 1 month	13 person(s)	13 person(s)	8 person(s)
Infants mortality within 1 month per 1,000 births	28	23	14

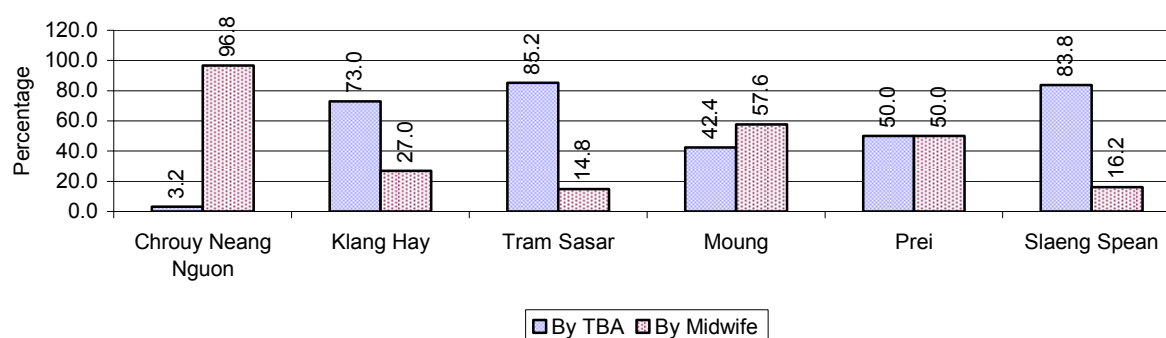
Description	2006	2007	2008
Number of children who died below the age of 5.	15 person(s)	22 person(s)	10 person(s)
Number of infants, aged 9-12 months, born during the year	217 person(s)	361 person(s)	331 person(s)
Nr. infants, aged 9-12 months, not receiving full immunization	51 person(s)	61 person(s)	44 person(s)
% of 9-12 months infants, not receiving full immunization	24 %	17 %	13 %

**Note:** TBA = Traditional Birth Attendant

### 3.2.2 Mothers dying within 0 days to 1 month of giving Birth and Infants dying within 1 month in 2008, by Commune

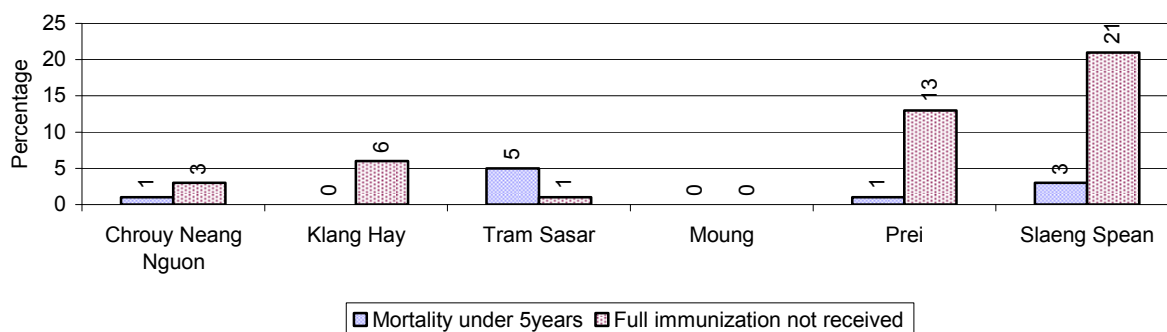


### 3.2.3 Percentage of Women delivering with a TBA or Midwife, by Commune



**Note:** Calculated as a percentage of total deliveries

### 3.2.4 Percentage of Children dying below 5 & of 9-12 months not receiving full Immunization, by Commune, in 2008



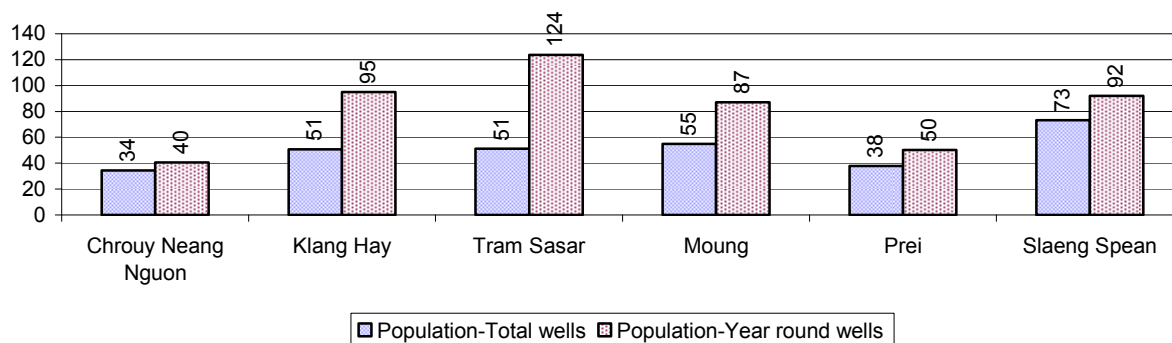
**Note:** Mortality rate calculated as a percentage of the total 5 year old population. Lack of immunization received calculated as a percentage of the total number 9-12 months olds there are

## 3.3 Water and Sanitation

### 3.3.1 Number of different types of Wells over 3 years

Type of wells	Number of wells by year		
	2006	2007	2008
<i>Total number of pumped or mixed wells</i>	0	106	29
Year-round usable pumped or mixed wells	0	82	19
Dry season unusable pump or mixed wells	0	24	10
Pump or mixed wells needing repair/rehabilitation	0	41	26
<i>Total number of ring wells</i>	482	679	684
Year-round usable ring wells	359	509	476
Dry season unusable ring wells	123	170	208
Ring wells needing repair/rehabilitation	82	103	115
<i>Total number of unprotected dug wells</i>	146	182	133
Year-round usable unprotected dug wells	72	63	74
Dry season unusable unprotected dug wells	74	119	59

### 3.3.2 Ratio of People to Wells, by Commune, in 2008

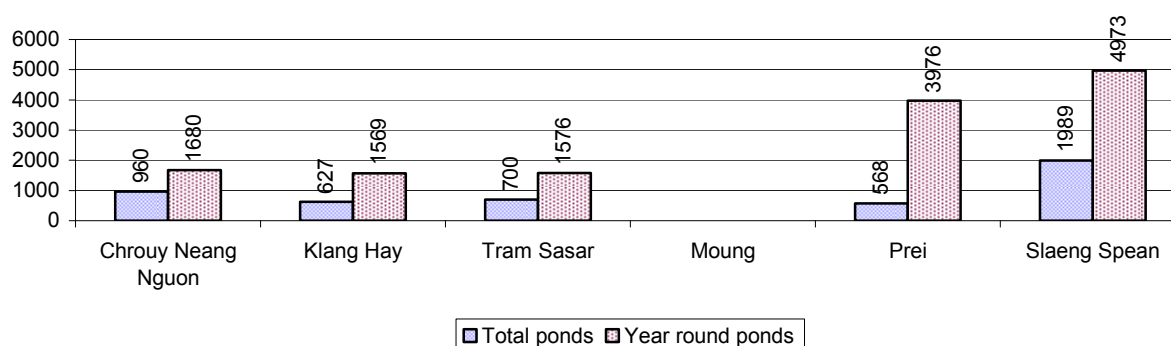


**Note:** Year-round wells excluding unprotected wells

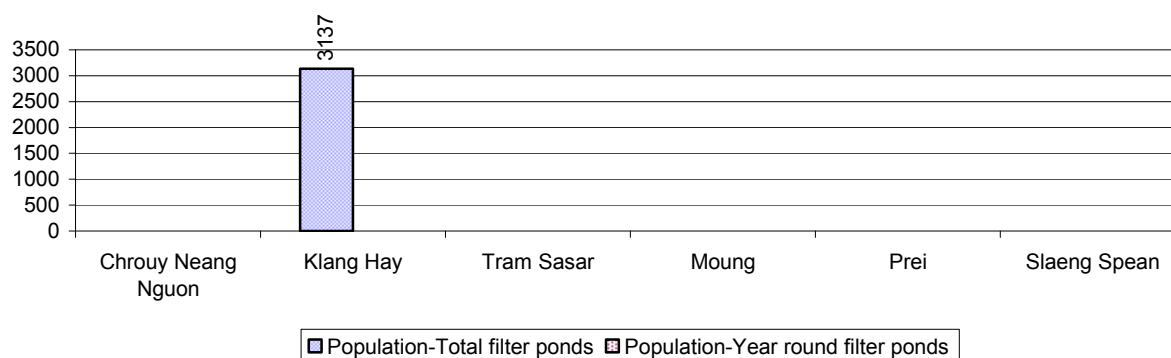
### 3.3.3 Potable Ponds over 3 years

Type of Pond	2006	2007	2008
<i>Total number of normal-type ponds</i>	34 pond	33 pond	33 pond
Year-round usable normal-type ponds	11 pond	15 pond	13 pond
Dry season unusable normal-type ponds	23 pond	18 pond	20 pond
Normal-type ponds needing repair/rehabilitation	29 pond	36 pond	36 pond
<i>Total number of filter ponds</i>	3 pond	6 pond	1 pond
Year-round usable filter ponds	0 pond	1 pond	0 pond
Filter ponds, dry season unusable	3 pond	5 pond	1 pond
Filter ponds needing repair/rehabilitate	6 pond	20 pond	4 pond

### 3.3.4 Ratio of People to normal Ponds, by Commune in 2008



### 3.3.5 Ratio of People to Filter Ponds, by Commune, in 2008

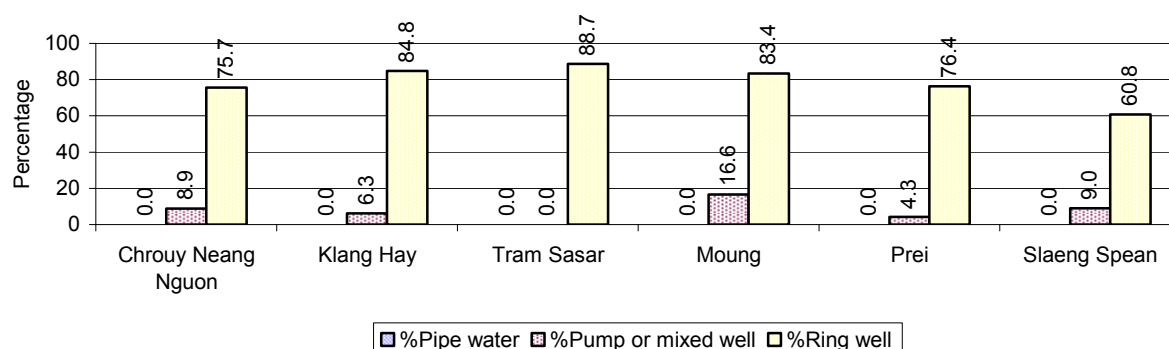


### 3.3.6 Source of potable Water for Households, over 3 years

Water sources	2006 %	2007 %	2008	
			%	Number
Families using water from purification system	0%	1 %	0 %	0 families
Families using water from pump, mixed wells	5%	3 %	8 %	490 families
Families using water from ring wells and open dug wells	82%	85 %	76 %	4,904 families
Families using water from pond	6%	6 %	7 %	469 families
Families using water from rain water storage	0%	0 %	1 %	47 families
Families using water from rivers, lakes, natural ponds and reservoirs	6%	5 %	9 %	566 families

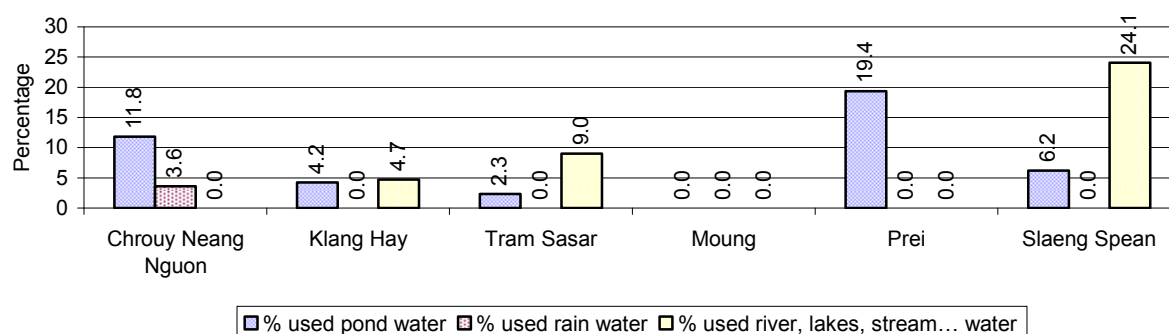
**Note:** Calculated as a percentage of the total number of families.

### 3.3.7 Percentage Families using different Water Sources, by Commune, in 2008



**Note:** Calculated as a percentage of the total number of families in each commune

### 3.3.8 Percentage Families using Water from Rain Water Storage, Ponds and natural Sources (rivers/lakes/natural ponds/reservoirs), by Commune, 2008



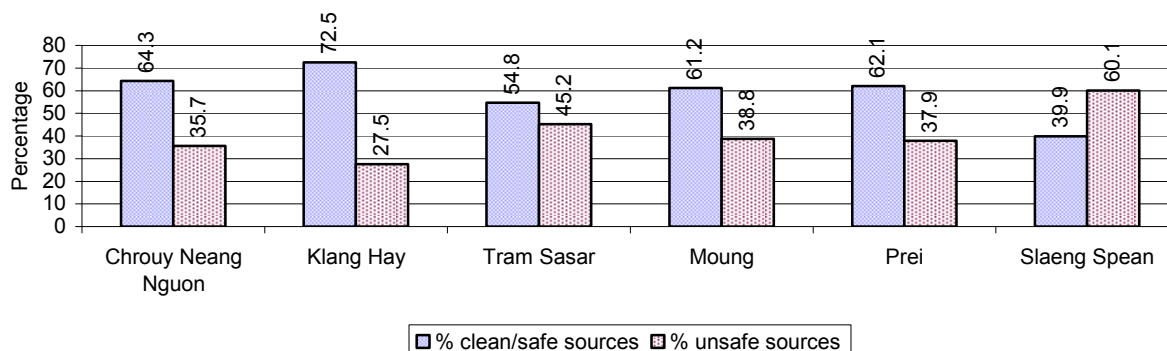
**Note:** Calculated as a percentage of the total number of families in each commune

### 3.3.9 Drinking Water Sources in the dry Season over 3 years

Percentage Families that get drinking water from:	2006 %	2007 %	2008	
			%	Number
from clean/safe sources	28 %	26 %	56 %	3,626 families
from unsafe sources	72 %	74 %	44 %	2,850 families

**Note:** Calculated as a percentage of the total number of families.

### 3.3.10 Percentage Families using safe and unsafe Water Sources in the dry Season, by Commune, in 2008



**Note:** Calculated as a percentage of the total number of families in each commune.

### 3.3.11 Drinking Water Purification by Households, over 3 years

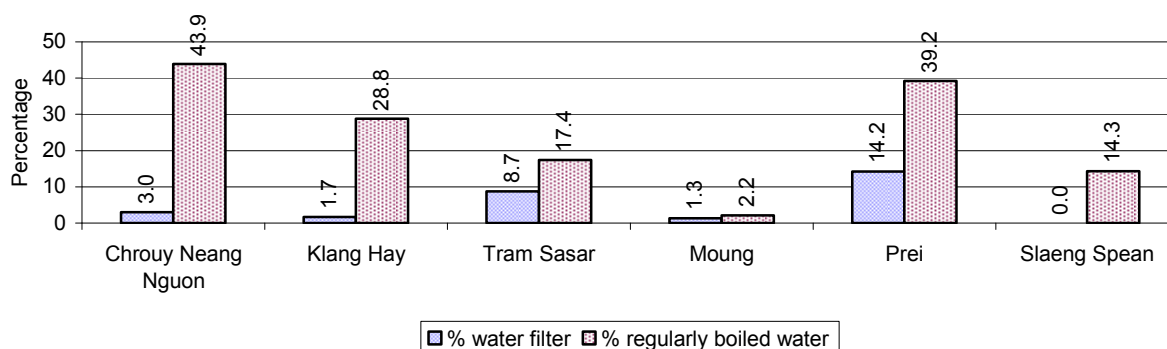
This table shows the different ways families make water safe for drinking.

Families, who:	2006	2007	2008	
	%	%	%	Number
Filter water for drinking	6%	8%	4 %	268 families
Boil water for drinking	25%	21%	24 %	1,531 families

**Note:** Calculated as a percentage of the total number of families

### 3.3.12 Percentage Families filtering Water or regularly boiling Water, by Commune, in 2008

This graph shows the different ways families make drinking water safe.



**Note:** Calculated on as a percentage of the total number of families in each commune.

### 3.3.13 Families' access to Water, over 3 years

Families access to water	2006	2007	2008	
	%	%	%	Number
Families with water at home or in less than 150m	67%	22%	16 %	1,067 families
Families with water 150m or more away from home	26%	13%	34 %	2,201 families

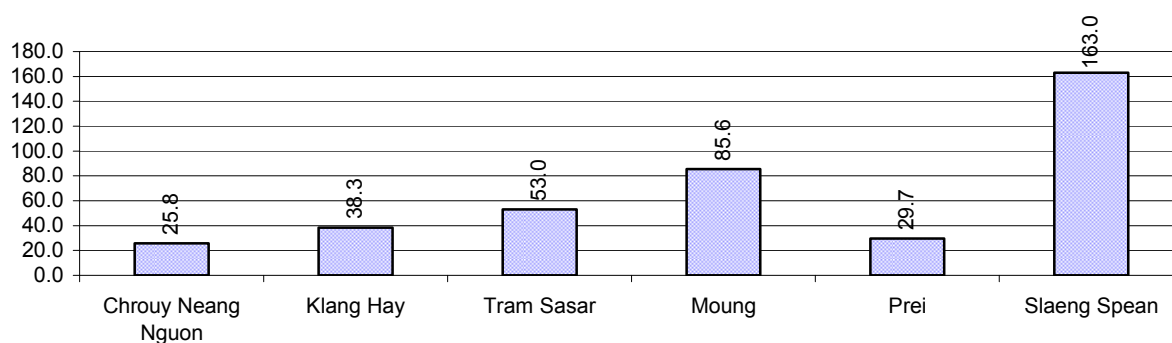
**Note:** Calculated as a percentage of the total number of families

### 3.3.14 Ratio of people to Latrines over 3 years

Description	2006	2007	2008	
	Ratio	Ratio	Ratio	Number
Ratio of people to latrines	72.9	47.5	49.1	715.0

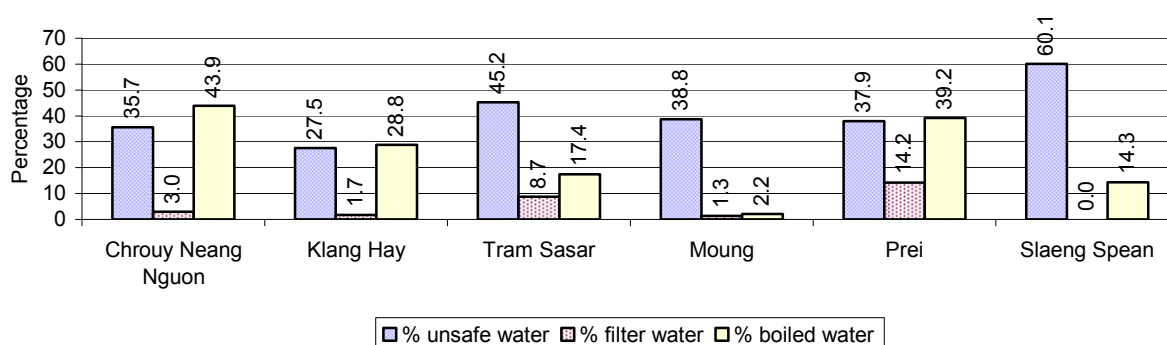
**Note:** Ratio calculated by dividing the number of houses with latrines by the total population

### 3.3.15 Ratio of People to Latrines, by Commune, in 2008



**Note:** Ratio calculated by dividing the number of houses with latrines by the total population in a Commune.

### 3.3.16 Percentage of Families drinking boiled, filtered or unsafe Water, by Commune, in 2008



**Note:** Calculated as a percentage of the total number of families in each commune.

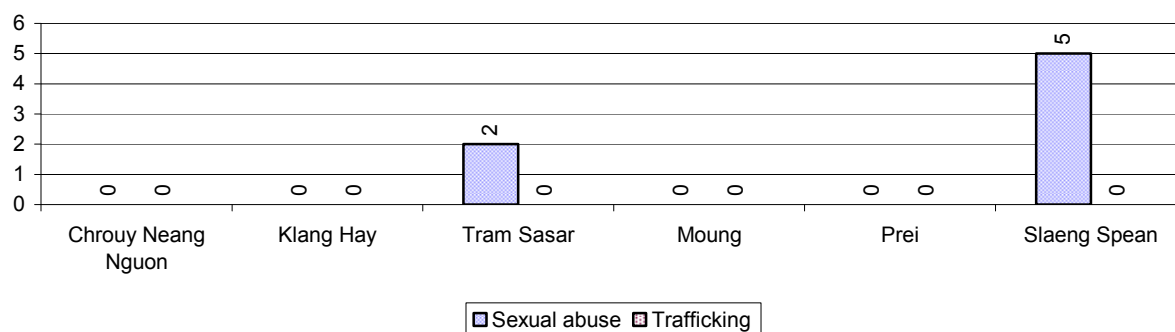
## 3.4 Vulnerable groups

### 3.4.1 Vulnerable Groups in need of special Protection over 3 years

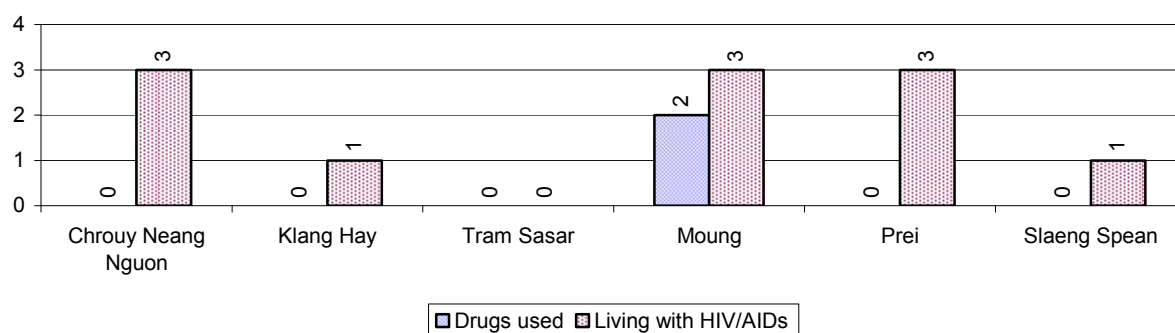
Vulnerable groups	2006	2007	2008
Victims of sexual abuse	0 person(s)	2 person(s)	7 person(s)
Victims of human trafficking	0 person(s)	0 person(s)	0 person(s)
Families with family member(s) using drugs	0 families	1 families	2 families
Families with family member(s) living with HIV/AIDS	4 families	9 families	11 families
Children under 18 yrs old whose parent died of AIDS	6 person(s)	25 person(s)	17 person(s)
Orphaned/abandoned children under 18 yrs old (all cases)	139 person(s)	154 person(s)	209 person(s)
Elderly persons without guardian	69 person(s)	63 person(s)	55 person(s)
Disabled people able to earn an income	51 person(s)	42 person(s)	37 person(s)
Disabled people unable to earn an income	40 person(s)	84 person(s)	80 person(s)
Disabled people under 18 yrs old	40 person(s)	40 person(s)	33 person(s)
Victims of natural disasters	18 families	2,041 families	618 families
Victims of land mines and unexploded weapons	30 person(s)	16 person(s)	7 person(s)



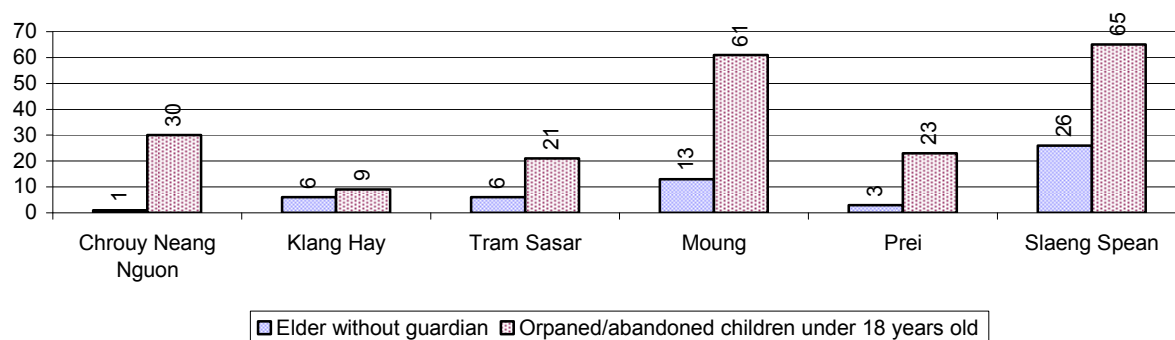
### 3.4.2 Registered Victims of sexual Abuse or Trafficking, by Commune, for 2008



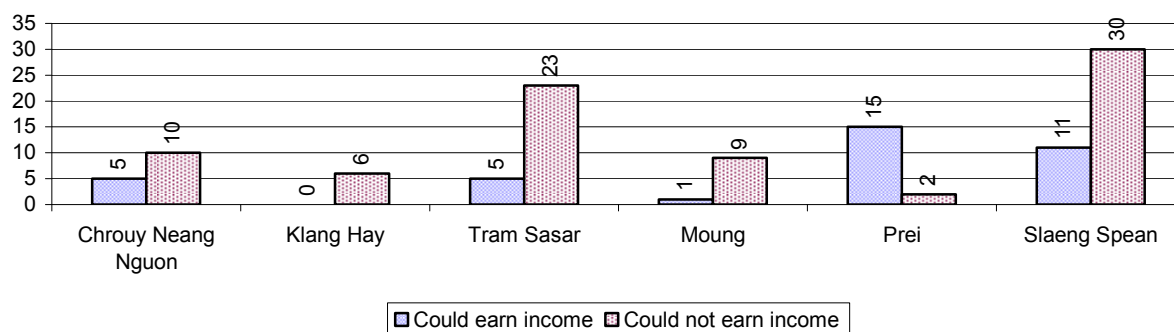
### 3.4.3 Registered Families with Member(s) using Drugs or living with HIV/AIDS, by Commune, for 2008



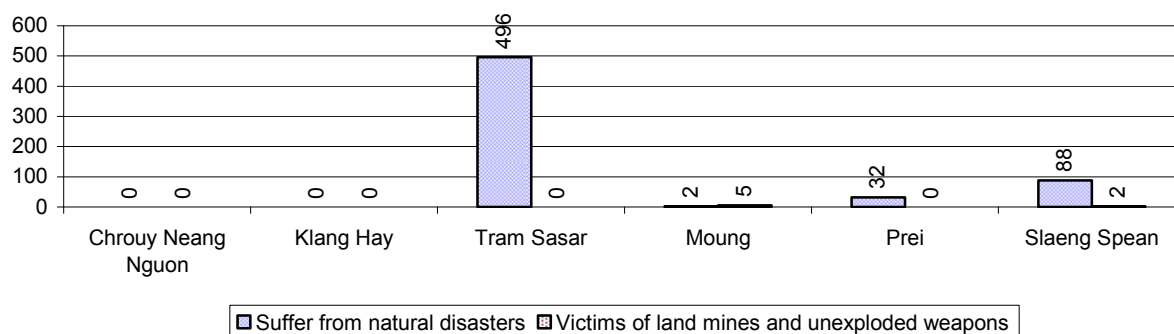
### 3.4.4 Elderly Persons without a Guardian and orphaned/abandoned Children under 18 years old, by Commune, for 2008



### 3.4.5 Number of disabled People who could or could not earn an Income, by Commune, for 2008



### 3.4.6 Number of Families who suffered from natural Disasters, and number of Victims of Land Mines and unexploded Weapons, by Commune, in 2008



## 3.5 Migration

### 3.5.1 Migration over 3 years

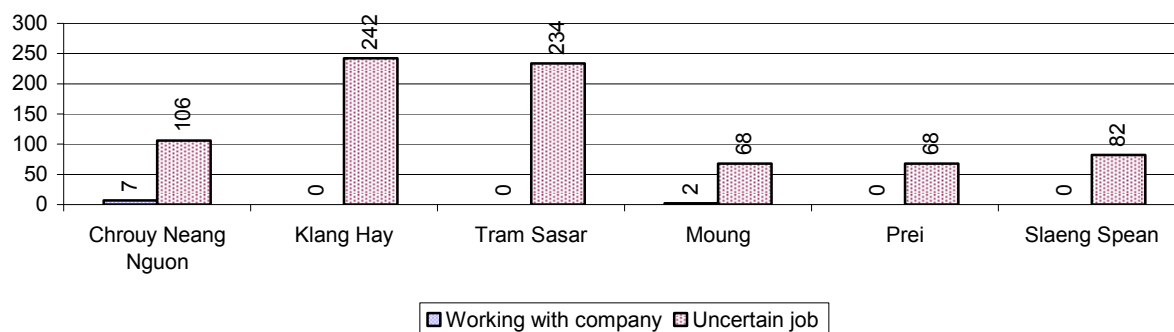
Description	2006	2007	2008
Number of families permanently in-migrated	families	42 families	95 families
Total number of people	147 person(s)	166 person(s)	351 person(s)
Total number of female	79 person(s)	81 person(s)	180 person(s)
Number of families permanently out-migrated	87 families	56 families	77 families
Total number of people	282 person(s)	291 person(s)	280 person(s)
Total number of female	156 person(s)	136 person(s)	164 person(s)
Number of families staying temporarily	13 families	15 families	18 families
Total number of people	46 person(s)	42 person(s)	56 person(s)
Total number of female	21 person(s)	21 person(s)	30 person(s)

### 3.5.2 Job Migration

Description	2006	2007	2008	
Number of people migrated to work with company/factory	0%	0%	0%	9 persons
Number of people migrated to work, but have uncertain jobs	5%	4%	4%	800 persons

**Note:** Calculated as a percentage of the total population of 18-60 year olds

### 3.5.3 Number of People working outside their home Villages in a Company/Factory or with an uncertain Job in 2008

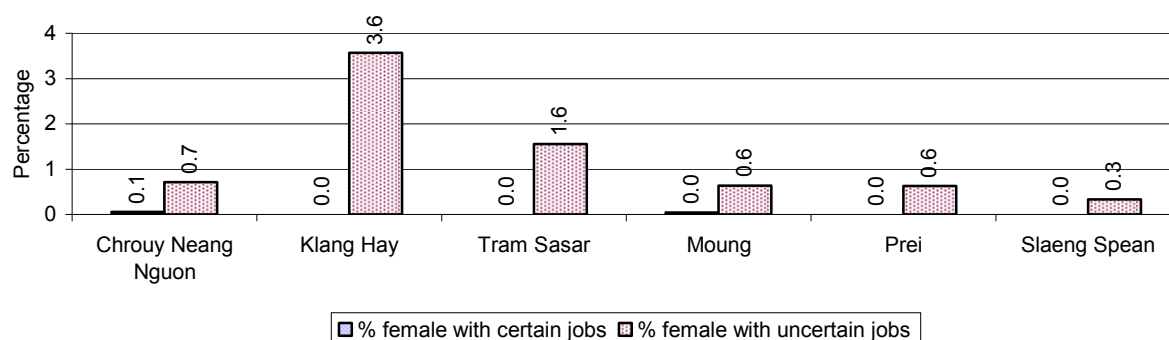


### 3.5.4 Female migration over 3 years

Description	2006 %	2007 %	2008	
			%	Number
Total number of migrants	2.6%	2.0%	2.3%	809 person(s)
Number of female migrants	1.0%	0.7%	1.0%	354 person(s)
Total number of migrants, who go to work with company/factory (with certain jobs)	0.0%	0.0%	0.0%	9 person(s)
Number of female migrants with certain jobs	0.0%	0.0%	0.0%	6 person(s)
Total number of migrants with uncertain jobs	2.6%	2.0%	2.3%	800 person(s)
Number of female migrants with uncertain jobs	1.0%	0.7%	1.0%	348 person(s)

**Note:** Calculated as a percentage of the total population

### 3.5.5 Percentage female Migrants with certain and uncertain Jobs, by Commune, in 2008



**Note:** Calculated as a percentage of the total population of the commune

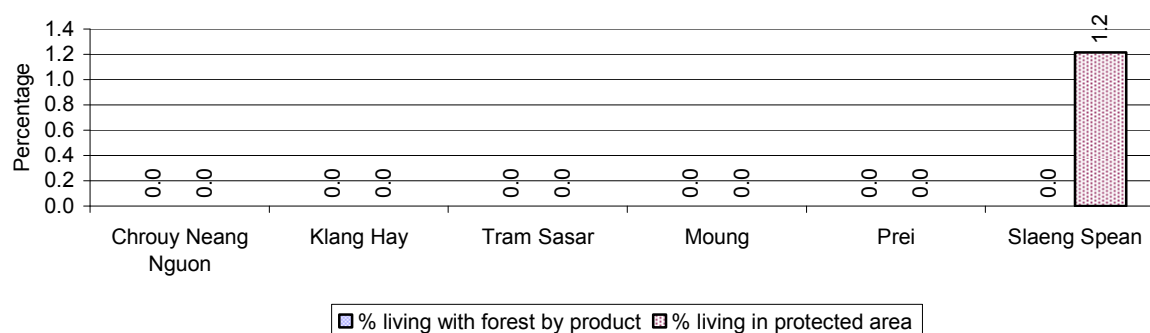
## 4 Natural Resources and Environment (NRE)

### 4.1 Families involved with NRE issues over 3 years

Description	2006 %	2007 %	2008	
			%	Number
Families living with forest by products	0 %	0 %	0 %	0 families
Families living in a protected area	0 %	1 %	0 %	22 families
Houses with access to garbage collection service	0 %	1 %	0 %	1 families
Families affected by environmental pollution	0 %	0 %	0 %	7 families
Families using chemical fertilizer	83 %	85 %	78 %	5,026 families
Families using chemical pesticide	20 %	29 %	26 %	1,672 families

**Note:** Calculated as a percentage of the total number of families

### 4.2 Percentage of Families involved with Natural Resource issues, by Commune, for 2008



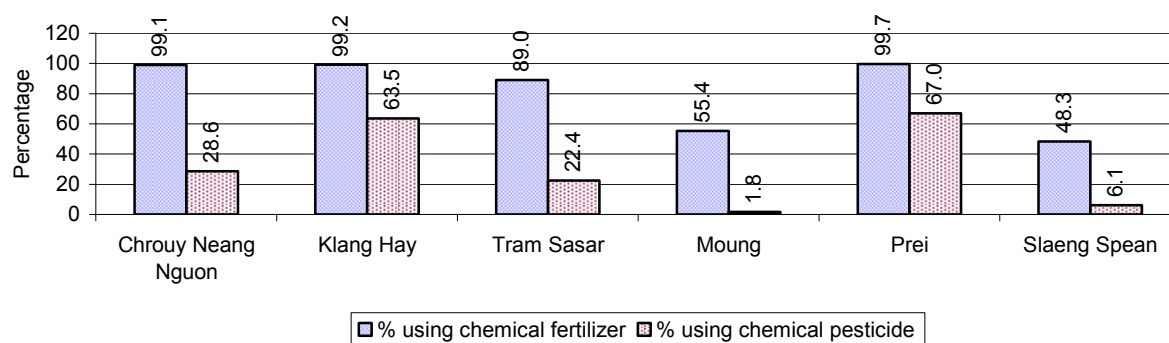
**Note:** Calculated as a percentage of the number of families in each commune

### 4.3 Percentage Houses with access to Garbage collection and Families affected by environmental Pollution, by Commune, for 2008



**Note:** Garbage collection is calculated as a percentage of the total number of houses in each commune and families affected by environmental pollution is calculated as a percentage of the total number of families in each commune.

#### 4.4 Percentage Families using chemical Fertilizer and chemical Pesticides, by Commune, for 2008



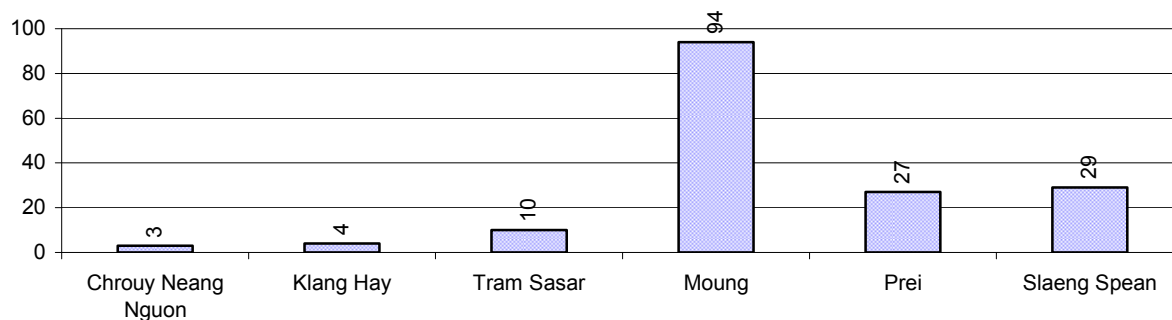
**Note:** Calculated as a percentage of the total number of families in each commune

## 5 Administration and Security

### 5.1 Birth Registration across 3 years

Description	2006	2007	2008
Number of infants to be registered	445 person(s)	549 person(s)	548 person(s)
Number of unregistered infants the year	58 person(s)	133 person(s)	167 person(s)
Percentage of infants unregistered	13 %	24 %	30 %

### 5.2 Number of unregistered Infants born in 2008, by Commune

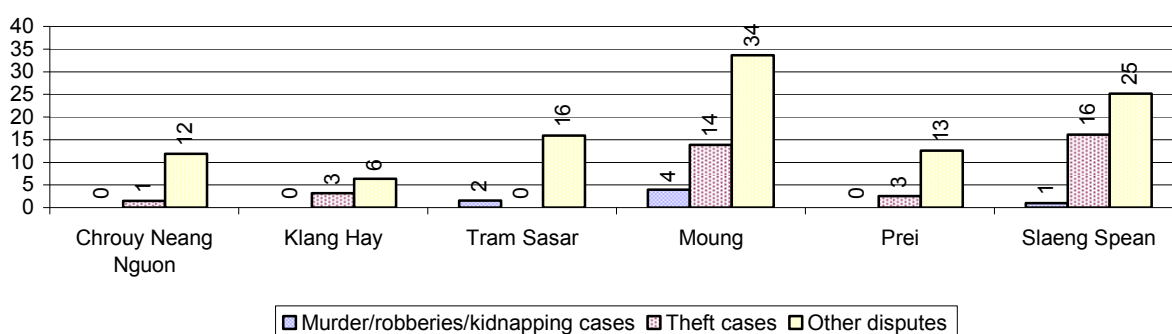


### 5.3 Registered criminal Cases over 3 years

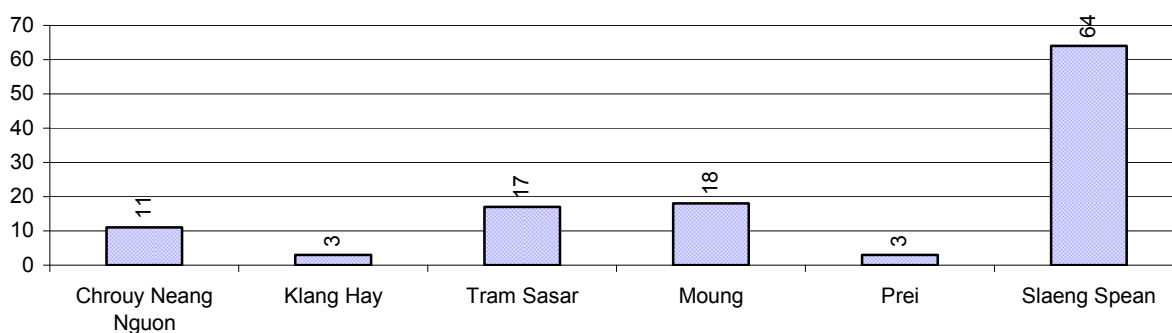
Description	2006	2007	2008
Murders, robberies and kidnapping cases	0 case(s)	1 case(s)	4 case(s)
Theft cases	49 case(s)	35 case(s)	26 case(s)
land dispute cases	109 case(s)	213 case(s)	116 case(s)
Other disputes cases	199 case(s)	74 case(s)	67 case(s)

*Note: this reflects only registered criminal cases*

### 5.4 Registered criminal Cases per 10,000 people, by Commune, for 2008



### 5.5 Number of registered Land Disputes, by Commune, in 2008

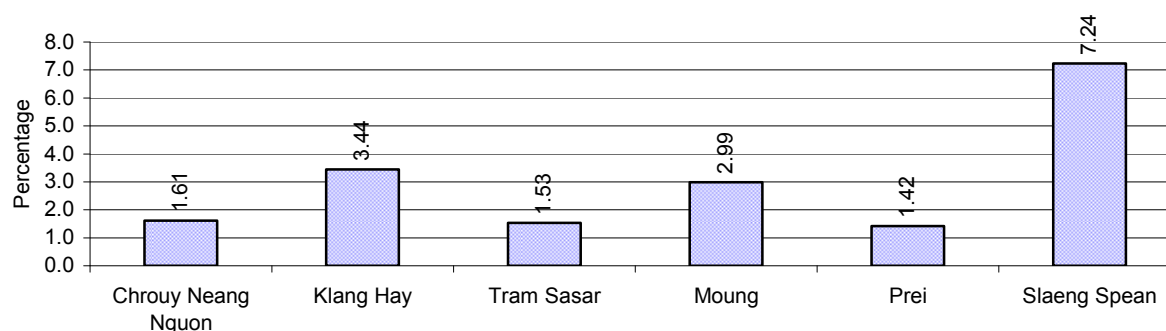


## 6 Gender

### 6.1 Registered Domestic Violence over 3 years

Description		2006	2007	2008
Families experiencing domestic violence		132 families	202 families	227 families(s)
% families experiencing domestic violence		2 %	3 %	4 %
Domestic violence cases reported by village chiefs		24 case(s)	73 case(s)	45 case(s)
Type	Physical violence	12 case(s)	16 case(s)	9 case(s)
	Sexual violence	0 case(s)	6 case(s)	1 case(s)
	Mental violence	6 case(s)	46 case(s)	29 case(s)
	Household economic violence	6 case(s)	5 case(s)	6 case(s)
Number of administrative decisions on domestic violence		0 case(s)	16 case(s)	15 case(s)
% of administrative decisions on domestic violence		0 %	22 %	33 %

### 6.2 Percentage of registered cases of Families experiencing domestic Violence, by Commune, in 2008



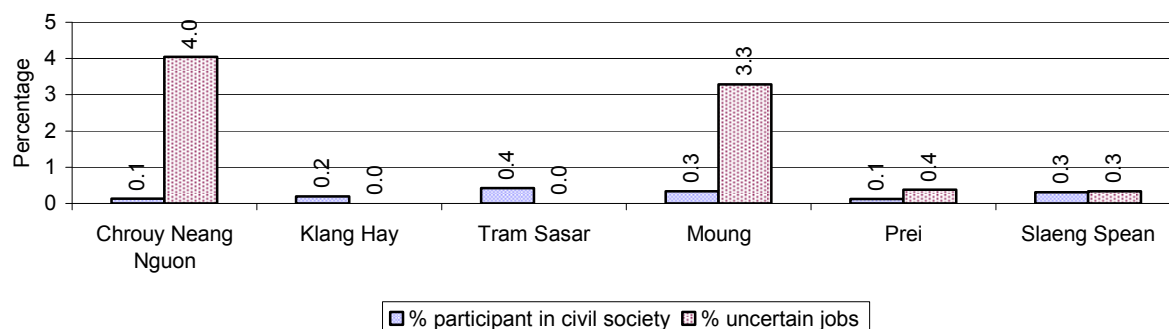
**Note:** Calculated as a percentage of the total number of families in each commune

### 6.3 Women's involvement over 3 years

Description	2006 %	2007 %	2008	
			%	Number
People participating in civil society	0%	1%	1%	232 person(s)
Women participating in civil society	0%	0%	0%	95 person(s)
People, 18-60 yrs, with uncertain/irregular jobs	9%	13%	3%	452 person(s)
Women, 18-60 yrs, with uncertain/irregular jobs	5%	7%	1%	246 person(s)

**Note:** Participation can be in NGOs, CBOs, credit groups, women's unions, parties and other civil society organizations. The first section is calculated as a percentage of the total population. The second section is calculated as a percentage of the total 18-60 year old population.

#### 6.4 Percentage of Female Participants in Civil Society and of 18-60 year women with uncertain Jobs, by Commune, in 2008



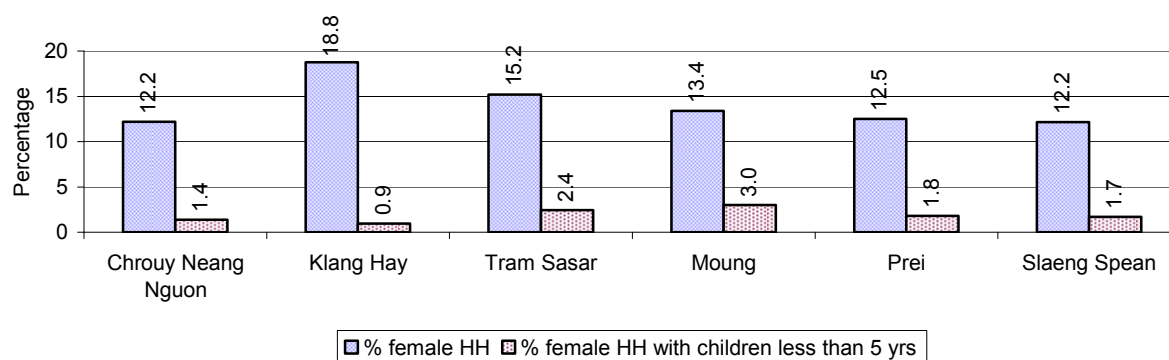
**Note:** Percentage of female participants in civil society is calculated as a percentage of the total population per commune. The percentage of 18-60 years old women with uncertain jobs is calculated as a percentage of the total 18-60 year old population per commune.

#### 6.5 Female-headed Households over 3 years

Families with:	2006	2007	2008	
	%	%	%	Number
Households in which a woman is the family head	13%	13%	14%	877 families
Households in which a woman is the family head with children of less than 5 yrs	2%	3%	2%	121 families

**Note:** Calculated as a percentage of the total number of families

#### 6.6 Percentage female-headed Households and with Children of less than 5 years old, by Commune, in 2008



**Note:** Calculated as a percentage of the total number of families in each commune  
HH: Headed Household



## 7 Indigenous People in the District

### 7.1 Ethnic Minorities in the District over 3 years

Race of indigenous	2006		2007		2008	
	# families	# population	# families	# population	# families	# population
Phnong	0 families	0 person(s)	0 families	0 person(s)	0 families	0 person(s)
Kouy	0 families	0 person(s)	0 families	0 person(s)	0 families	0 person(s)
Stieng	0 families	0 person(s)	0 families	0 person(s)	0 families	0 person(s)
Mil	0 families	0 person(s)	0 families	0 person(s)	0 families	0 person(s)
Kroal	0 families	0 person(s)	0 families	0 person(s)	0 families	0 person(s)
Thmorn	0 families	0 person(s)	0 families	0 person(s)	0 families	0 person(s)
Khaonh	0 families	0 person(s)	0 families	0 person(s)	0 families	0 person(s)
Tompouonn	0 families	0 person(s)	0 families	0 person(s)	0 families	0 person(s)
Charay	0 families	0 person(s)	0 families	0 person(s)	0 families	0 person(s)
Kroeung	0 families	0 person(s)	0 families	0 person(s)	0 families	0 person(s)
Kavet	0 families	0 person(s)	0 families	0 person(s)	0 families	0 person(s)
Saouch	0 families	0 person(s)	0 families	0 person(s)	0 families	0 person(s)
Lun	0 families	0 person(s)	0 families	0 person(s)	0 families	0 person(s)
Kachak	0 families	0 person(s)	0 families	0 person(s)	0 families	0 person(s)
Praov	0 families	0 person(s)	0 families	0 person(s)	0 families	0 person(s)
Others	0 families	0 person(s)	0 families	0 person(s)	0 families	0 person(s)
<b>Total</b>	0 families	0 person(s)	0 families	0 person(s)	0 families	0 person(s)

**Note:** "Others" refer to other ethnic groups which are not listed.

### 7.2 Other Minorities in the District over 3 years

Minority	2006		2007		2008	
	# families	# population	# families	# population	# families	# population
Khmer Islamic	0 families	0 person(s)	0 families	0 person(s)	0 families	0 person(s)
Vietnamese	0 families	0 person(s)	0 families	0 person(s)	0 families	0 person(s)
Laos	0 families	0 person(s)	0 families	0 person(s)	0 families	0 person(s)

**Note:** Number of indigenous and minority population are additional data, so some village may not recorded.



## **SECTION C: PLANS AND PROJECTS**



## 8 Priorities and Plans

### 8.1 Priorities of Commune Councils for 2009 in the District by Sector

The District Priority Activity Matrix (DPAM) data are taken from the CDPD. The DPAM is used for the District Integration Workshop (DIW), to show what kind of projects the commune has proposed in their Commune Investment Plan (CIP) for 2009. Donors, departments and other agencies then consider which projects they want to support and which projects they are not interested in. This results in Temporary Agreements between the Commune Council and the Supporter (NGO, Department, private donor, etc), as shown in table 8.2

No.	Project Name	Chrouy Neang Nguon	Klang Hay	Tram Sasar	Moung	Prei	Slaeng Spean	Req.Project
		171201	171202	171203	171204	171205	171206	Total
<b>Economic</b>								
1	Compost fertilizer training	1 training						1
2	Chemical and pesticide application training				5 time			1
3	Subsidiary cropping technique training		40 place					1
4	Natural rice cultivation practice		8 time		25 family			2
5	Rice cultivation technique training	1 training						1
6	Animal vaccination request	1614 Head	24 time	550 Head	130 Head	500 Head	1400 Head	6
7	Village veterinary training	7 person		3 training				2
8	Animal pharmacy establish		24 time					1
9	Animal raising training			3 training		3 training		2
10	Compost making hut building		8 place	14 place		15 place		3
11	Rice seed request	350 Kg	5000 Kg		250 Kg	500 Kg	15 T	5
12	Fruit trees seedling request	70 Tree						1
13	Calf for raising request	14 Head	40 Head	26 Head	10 Head	21 Head	9 Head	6
14	Sow for raising request	35 Head				50 Head		2
15	Vegetable seeds request	70 Kg						1
16	Grazing seed request		40 place					1
17	Family fish pond construction		4 place	8 place	25 place	5 place		4
18	Fish raising training	1 training		8 training				2
19	Fish fingerling request	150 Head	4000 Head	60 Kg	2500 Head	60 Kg		5
20	Earth road construction	6830 m	3500 m	3400 m	5000 m	3500 m	3000 m	6
21	Laterite/natural gravel road construction	13000 m	1185 m	5000 m	2050 m	3000 m	3500 m	7
22	Culvert construction	10 place	4 place	4 place		5 place		4
23	Bridger construction						3 place	1

## District Data Book 2009: Development Plans and Projects

No.	Project Name	Chrouy Neang Nguon	Klang Hay	Tram Sasar	Moung	Prei	Slaeng Spean	Req.Project
		171201	171202	171203	171204	171205	171206	Total
24	Earth road repairing	3588 m		4600 m		4000 m		3
25	Laterite/natural gravel road repairing			3400 m	120 m			2
26	Canal construction	2000 m						1
27	Dam construction	1500 m	4500 m	800 m		300 m	150 m	5
28	Spillway construction			3 place				1
29	Canal repairing	1000 m	4500 m	3500 m	2250 m	2500 m		5
30	Dam repairing		150 m	1100 m	1000 m			3
31	Rice seed bank			800 Kg				1
32	Saving group association strengthening	30 Team						1
33	Small-scale handicraft establishments		40 person					1
Social								
1	Family planning	4 training		60 person		56 person		3
2	Reproductive health awareness education	4 training		12 time		12 training		3
3	HIV/AIDS awareness education	1 training		3 training		3 training		3
4	Health/hygiene education for local people			12 time	12 training	5 time		3
5	Health education service at health center				12 time			1
6	Women and children health care education		12 time					1
7	Children immunization provision	12 training					6 time	2
8	Children and women vaccination		8 time	12 time	15 time	12 time	6 time	5
9	Antenatal vaccination provision			12 time		12 time		2
10	Latrine construction	10 toilet	160 place	108 toilet	125 place	500 toilet	300 toilet	6
11	Sanitation day campaign organizing	1 training						1
12	Commune health center construction		1 place					1
13	Water filter equipment supply	70 Container					253 Container	2
14	Mixed wells construction	15 place						1
15	Pump wells construction	7 place	11 place	10 place	50 place	4 place		5
16	Ring wells construction		12 place	10 place	50 place	10 place	40 place	5
17	Ponds construction			3 place		2 place		2
18	Pump wells repairing				2 place			1
19	Ring wells repairing				24 place			1
20	Ponds repairing	1 place	4 place		25 place			3
21	Safe water equipment maintaining/repairing training			7 Team				1

District Data Book 2009: Development Plans and Projects

No.	Project Name	Chrouy Neang Nguon	Klang Hay	Tram Sasar	Moung	Prei	Slaeng Spean	Req.Project
		171201	171202	171203	171204	171205	171206	Total
22	Literacy class			4 class				1
23	Junior high school construction		6 room					1
24	Senior high school construction	6 room		1 building		1 place		3
25	School office construction	1 building						1
26	School building	2 building	6 room	1 building		1 place	5 place	5
27	Primary school creation/construction				2 building			1
28	Kindergarten school construction/repair		2 room	2 building		1 place		3
29	Pre-school teacher/kid keeper support		2 person					1
30	Motivating pupil's parents for school enrollment				12 time			1
31	Teacher/volunteer teacher need		6 person					2
32	School sport facilities/equipment project	1 set						1
33	School children toys supply	2 place						1
<b>NREM</b>								
1	Environmental awareness and law education		8 time					1
2	Fishery law education		8 time	2 training	5 time			3
3	Forestry law education	1 training			5 time	5 time		3
4	Education on importance of the forests			5 time		5 time		2
5	Wildlife protection law education			2 time				1
6	Education on the effect of polluted water					5 time		1
7	Establishment of NREM protection community			2 place				1
8	NREM education campaign		8 time					1
9	Tree plantation project	3500 Tree	1000 Tree	3500 Tree	1750 Tree	5000 Tree		5
10	Tree planting promotion/dissemination					5 time		1
11	Illegal fishing prevention	1 training			10 time	5 time		3
12	Natural water ways/reservoirs rehabilitation/conservation		2 place					1
13	Fish habitat/fish species protection/conservation						3 place	1
14	Community flooded forestry support			2 place				1
15	Community forestry activities support	1 place		3 place			5 place	3
16	Forest protection strengthening	3 place						1

District Data Book 2009: Development Plans and Projects

No.	Project Name	Chrouy Neang Nguon	Klang Hay	Tram Sasar	Moung	Prei	Slaeng Spean	Req.Project
		171201	171202	171203	171204	171205	171206	Total
17	Wildlife hunting prevention strengthening					5 time		1
18	Wildlife protection enforcement			7 Team				1
19	Temple/cultural ancient protection strengthening			1 place				1
<b>Administration and Security</b>								
1	Civil registration encouragement	1 training		300 person		60 person	4 training	4
2	CC capacity strengthening					2 training		1
3	Administration and commune law training					2 training		1
4	Land law dissemination	1 training		12 training		2 training		3
5	Provision of land titles/certificates	20 Copies		300 doc		600 doc	353 doc	4
6	Land registration dissemination/enforcement					3 training		1
7	Public land takeover prevention					3 training		1
8	People guard activities formation/strengthening	7 Team						1
9	Gambling control/elimination activation				5 time			1
10	Gangs gathering educated for local security						15 Team	1
11	Drug business/use prevention		8 time					1
12	Temporary dwellers management/control		8 time	50 family				2
13	Local security regulation/order dissemination	1 training	8 time		5 time			3
14	Tough group control activation		8 time		15 time			2
15	Family/temporary dweller record book provision			30 family				1
16	Identification card issued			300 person				1
17	Traffic accident prevention				5 time			1
<b>Gender</b>								
1	Women & Children FP strengthening	1 training				15 training		2
2	Woman and children's rights dissemination			5 training				1
3	Women vocational training						45 person	1
4	Tailor skill training	7 person						1
5	Materials support to create women job	7 set						1
6	Law against domestic violence	4 training	12 time	5 training	12 time	300	4 training	6



District Data Book 2009: Development Plans and Projects

No.	Project Name	Chrouy Neang Nguon	Klang Hay	Tram Sasar	Moung	Prei	Slaeng Spean	Req.Project
		171201	171202	171203	171204	171205	171206	Total
	dissemination					person		
7	Rescue children & women from violence			5 training				1
8	Alcohol reduction education					15 training		1
9	Law against trafficking dissemination				5 time			1
10	Trafficking of women/children control activity strengthening			5 time				1
11	Children's labor exploitation elimination					15 training		1
12	Sexual violence/harassment protection law dissemination					15 training		1
13	Children fund establishment/support				5 time			1

**Source:** CDPD – District Priority Matrix

## 8.2 Temporary Agreements by Commune, for 2009<sup>2</sup>

At the District Integration Workshop (DIW) the Supporters (donors, agencies, private donors, NGOs, etc.) identify which projects/activities they would like to support or they put forward their own projects to be implemented in a particular commune. Once there is agreement between Commune Councils and Supporters on specific projects a **Temporary Agreement** is signed by the commune and the Supporter to show their mutual commitment to the identified projects/activities.

It is important to keep in mind that such Temporary Agreements do not necessarily result in implementation.

### 8.2.1 Temporary Agreements for 2009 as per DIW 2008 for Commune: Chrouy Neang Nguon

Commune GIS	Commune	Temporary Agreements				Supporter	Funding Source	Listed in CIP befor DIW
		Project Name	Quantity	Unit	Est.Cost (K.Riels)			
Economic								
171201	Chrouy Neang Nguon	Community development credit for health	3	Team	36000	Department of Rural Development		<input type="checkbox"/>
171201	Chrouy Neang Nguon	Fish fingerling request	3	place	1868	Department of Agriculture Forestry and Fisheries	PIF	✓
Social								
171201	Chrouy Neang Nguon	Literacy class operation	1	class	3500	Department of Education Youth and Sports		<input type="checkbox"/>
171201	Chrouy Neang Nguon	Silkworm culture and silk production training	1	training	40000	Economic and Social Relaunch of Northern Provinces		<input type="checkbox"/>
171201	Chrouy Neang Nguon	Sewing skill training	1	training	4536	Department of Women	PIF	<input type="checkbox"/>
171201	Chrouy Neang Nguon	Wells construction in primary school	1	well	7200	Plan International		<input type="checkbox"/>
171201	Chrouy Neang Nguon	Kindergarten school building	1	building	80000	Plan International		<input type="checkbox"/>
171201	Chrouy Neang Nguon	Secondary school construction	1	building	400000	Plan International		<input type="checkbox"/>
171201	Chrouy Neang Nguon	Reproductive health awareness education	3	village	12048			✓
171201	Chrouy Neang	Mixed wells construction	6	well	43200	Plan International		✓

<sup>2</sup> Not all the data from the CDPD has been translated to English, this has resulted in some cells in the TA tables being blank.

District Data Book 2009: Development Plans and Projects

Commune GIS	Commune	Temporary Agreements				Supporter	Funding Source	Listed in CIP before DIW
		Project Name	Quantity	Unit	Est.Cost (K.Riels)			
	Nguon							
171201	Chrouy Neang Nguon	School building	1	building	400000	Plan International		✓
<b>NREM</b>								
171201	Chrouy Neang Nguon	Community forestry activities support	1	training	100	Forest administration		✓
171201	Chrouy Neang Nguon	Tree plantation project	3500	Tree	52500	Forest administration		✓
<b>Gender</b>								
171201	Chrouy Neang Nguon	Female councilors capacity strengthening forum	2	training	200	Department of Women		□

### 8.2.2 Temporary Agreements for 2009 as per DIW 2008 for Commune: Klang Hay

Commune GIS	Commune	Temporary Agreements				Supporter	Funding Source	Listed in CIP befor DIW
		Project Name	Quantity	Unit	Est.Cost (K.Riels)			
Social								
171202	Klang Hay	Activities for community health development	2	village	8032			<input type="checkbox"/>
171202	Klang Hay	CLTS program (community leading group hygiene)	2	village	1000	Plan International		<input type="checkbox"/>
171202	Klang Hay	Latrine construction	1	place	12000	Plan International		✓
171202	Klang Hay	Ring wells construction	3	well	21600	Plan International		✓
NREM								
171202	Klang Hay	Tree plantation project	1000	Tree	15000	Forest administration		✓
Gender								
171202	Klang Hay	Female councilors capacity strengthening forum	2	training	200	Department of Women		<input type="checkbox"/>

**8.2.3 Temporary Agreements for 2009 as per DIW 2008 for Commune: Tram Sasar**

Commune GIS	Commune	Temporary Agreements				Supporter	Funding Source	Listed in CIP befor DIW
		Project Name	Quantity	Unit	Est.Cost (K.Riels)			
Economic								
171203	Tram Sasar	Training and fund provision to farmers for agriculture production, livestock and fish raising	1	training	5017	Economic and Social Relaunch of Northern Provinces		<input type="checkbox"/>
171203	Tram Sasar	Earth road repair	5350	m	131440	Department of Rural Development		✓
171203	Tram Sasar	Fish fingerling request	3	place	1868	Department of Rural Development	PIF	✓
171203	Tram Sasar	Cash saving training	1	Team	80	Economic and Social Relaunch of Northern Provinces		<input type="checkbox"/>
171203	Tram Sasar	Credit provision	1	Team	15750	Economic and Social Relaunch of Northern Provinces		<input type="checkbox"/>
171203	Tram Sasar	Agriculture, livestock and fish raising technique training to target farmers	10	training	5018	Economic and Social Relaunch of Northern Provinces		<input type="checkbox"/>
171203	Tram Sasar	Laterite road construction	8	km	640000	Department of Rural Development		✓
Social								
171203	Tram Sasar	School building	1	building	268364	Plan International		✓
171203	Tram Sasar	Literacy class	2	class	1400	Department of Education Youth and Sports	PIF	✓
171203	Tram Sasar	Ring wells construction	1	village	12164	Economic and Social Relaunch of Northern Provinces		✓
171203	Tram Sasar	Health/hygiene education for local people	1	training	103	Economic and Social Relaunch of Northern Provinces		✓
171203	Tram Sasar	Ring wells construction	7	place	50400	Plan International		✓
171203	Tram Sasar	Water filter buckets provision	10	Container	440	Plan International		<input type="checkbox"/>
171203	Tram Sasar	Activities for health development	3	village	12048			<input type="checkbox"/>
171203	Tram Sasar	Essentials of soil curriculum for lower and upper secondary school	3	schools	5710	Economic and Social Relaunch of Northern Provinces		<input type="checkbox"/>

District Data Book 2009: Development Plans and Projects

Commune GIS	Commune	Temporary Agreements				Supporter	Funding Source	Listed in CIP before DIW
		Project Name	Quantity	Unit	Est.Cost (K.Riels)			
171203	Tram Sasar	Skills training of commune target people	1	training	20580	Economic and Social Relaunch of Northern Provinces		<input type="checkbox"/>
171203	Tram Sasar	Vocational skills training for mine/UXO disabled people	1	training	1470	Economic and Social Relaunch of Northern Provinces		<input type="checkbox"/>
171203	Tram Sasar	Silkworm culture and silk production training	5	village	14000	Economic and Social Relaunch of Northern Provinces		<input type="checkbox"/>
171203	Tram Sasar	Fish processing (paste) skills training and dissemination to farmer	1	training	100	Economic and Social Relaunch of Northern Provinces		<input type="checkbox"/>
<b>NREM</b>								
171203	Tram Sasar	Environmental improvement, agriculture services, rice seed and livestock production, livestock bank, vaccination, cropping, animal feed crop project	1	village	6283	Economic and Social Relaunch of Northern Provinces		<input type="checkbox"/>
171203	Tram Sasar	Tree seedling supply	3500	Tree	52500	Forest administration		<input type="checkbox"/>
<b>Administration and Security</b>								
171203	Tram Sasar	Demining for agriculture land	1	training	180000	Economic and Social Relaunch of Northern Provinces		<input type="checkbox"/>
171203	Tram Sasar	Mine/UXO education and respond to mine/UXO to community	1	training	1800	Economic and Social Relaunch of Northern Provinces		<input type="checkbox"/>
171203	Tram Sasar	LIP committee and CC strengthening	1	training	147	Economic and Social Relaunch of Northern Provinces		<input type="checkbox"/>
171203	Tram Sasar	Land ownership right awareness campaigns	1	training	4896	Economic and Social Relaunch of Northern Provinces		<input type="checkbox"/>
<b>Gender</b>								
171203	Tram Sasar	Female councilors capacity strengthening forum	2	training	200	Department of Women		<input type="checkbox"/>
171203	Tram Sasar	Gender awareness training in target commune	2	training	210	Economic and Social Relaunch of Northern Provinces		<input type="checkbox"/>

**8.2.4 Temporary Agreements for 2009 as per DIW 2008 for Commune: MOUNG**

Commune GIS	Commune	Temporary Agreements				Supporter	Funding Source	Listed in CIP befor DIW
		Project Name	Quantity	Unit	Est.Cost (K.Riels)			
Economic								
171204	Moung	Silkworm culture and silk production training	1	village	33600	Economic and Social Relaunch of Northern Provinces		<input type="checkbox"/>
171204	Moung	New canal construction	1350	m	30740	Department of Rural Development		<input type="checkbox"/>
171204	Moung	Community development credit for health	3	Team	18000	Department of Rural Development		<input type="checkbox"/>
171204	Moung	Earth road construction	4000	m	202460	Department of Rural Development		✓
171204	Moung	Laterite road construction	5	km	400000	Department of Rural Development		✓
Social								
171204	Moung	Activities for health development	2	village	8032			<input type="checkbox"/>
171204	Moung	CLTS program (community leading group hygiene)	1	training	100	Plan International		<input type="checkbox"/>
171204	Moung	Water filter buckets provision	2	Container	88	Plan International		<input type="checkbox"/>
171204	Moung	Latrine construction for school	1	toilet	12000	Plan International		<input type="checkbox"/>
171204	Moung	Ring wells construction	6	well	36000	Plan International		✓
NREM								
171204	Moung	Tree plantation project	1000	Tree	15000	Forest administration		✓
Gender								
171204	Moung	Female councilors capacity strengthening forum	2	training	200	Department of Women		<input type="checkbox"/>
171204	Moung	Gender concept and gender mainstreaming training	1	training	200	Department of Women	PIF	<input type="checkbox"/>
171204	Moung	Law against domestic violence dissemination	1	training	110	Department of Women	PIF	✓

**8.2.5 Temporary Agreements for 2009 as per DIW 2008 for Commune: Prei**

Commune GIS	Commune	Temporary Agreements				Supporter	Funding Source	Listed in CIP befor DIW
		Project Name	Quantity	Unit	Est.Cost (K.Riels)			
Economic								
171205	Prei	Laterite road construction	2	km	160000	Department of Rural Development		✓
Social								
171205	Prei	Silkworm culture and silk production training	1	training	32000	Economic and Social Relaunch of Northern Provinces		☐
171205	Prei	Literacy class operation	1	class	3500	Department of Education Youth and Sports		☐
171205	Prei	CLTS program (community leading group hygiene)	1	training	100	Plan International		☐
171205	Prei	Water filter buckets provision	3	place	1056	Plan International		☐
171205	Prei	Commune health center construction	1	place	416000	Plan International		☐
171205	Prei	Health/hygiene education for local people	3	village	12048			✓
171205	Prei	Ring wells construction	2	place	14400	Plan International		✓
NREM								
171205	Prei	Tree plantation project	1500	Tree	15000	Forest administration		✓
Gender								
171205	Prei	Female councilors capacity strengthening forum	2	training	200	Department of Women		☐

**8.2.6 Temporary Agreements for 2009 as per DIW 2008 for Commune: Slaeng Spean**

Commune GIS	Commune	Temporary Agreements				Supporter	Funding Source	Listed in CIP befor DIW
		Project Name	Quantity	Unit	Est.Cost (K.Riels)			
Economic								
171206	Slaeng Spean	Earth road construction	4000	m	216120	Department of Rural Development		✓
171206	Slaeng Spean	Laterite road construction	17	km	1360000	Department of Rural Development		✓
Social								

District Data Book 2009: Development Plans and Projects

Commune GIS	Commune	Temporary Agreements				Supporter	Funding Source	Listed in CIP before DIW
		Project Name	Quantity	Unit	Est.Cost (K.Riels)			
171206	Slaeng Spean	Activities for health development	3	village	12048			<input type="checkbox"/>
171206	Slaeng Spean	Literacy class operation	4	class	14000	Department of Education Youth and Sports		<input type="checkbox"/>
171206	Slaeng Spean	KMeragpbl;meFúa)aycMeraHTwks¥at	1361	Container	5984	Plan International		✓
Administration and Security								
171206	Slaeng Spean	Mine/UXO education and respond to mine/UXO to community	1	training	3600	Economic and Social Relaunch of Northern Provinces		<input type="checkbox"/>
Gender								
171206	Slaeng Spean	Female councilors capacity strengthening forum	2	training	200	Department of Women		<input type="checkbox"/>

**Source:** CDPD, District Level Detail TA resulting from DIW



**8.3 Outputs, estimated and actual costs of C/S Fund Projects between 2005 and 2008, by Commune**

Commune	Project Type	Budget Year	Output		Quantity	Unit	Unit Cost MR	
			Description	Type			Estimate	Actual
Chrouy Neang Nguon	Rural Transport	2005	Laterite road	Routine maintenance	1.75	Km	25.44	23.66
Chrouy Neang Nguon	Rural Transport	2006	Laterite road	New	2.457	Km	34.37	34.37
Chrouy Neang Nguon	Rural Transport	2007	Laterite road	New	1.8	Km	30.69	30.89
Chrouy Neang Nguon	Rural Transport	2008	Laterite road	Repair	1.15	Km	29.89	29.89
Klang Hay	Rural Transport	2005	Laterite road	Routine maintenance	1.87	Km	24.32	23.11
Klang Hay	Rural Transport	2006	Laterite road	New	1.819	Km	27.06	27.06
Klang Hay	Rural Transport	2007	Laterite road	New	1.9	Km	25.75	26.00
Klang Hay	Rural Transport	2008	Laterite road	Repair	1.05	Km	24.53	24.53
Tram Sesar	Rural Transport	2005	Laterite road	Routine maintenance	2.1	Km	29.04	27.01
Tram Sesar	Rural Transport	2006	Laterite road	New	1.815	Km	29.35	29.35
Tram Sesar	Rural Transport	2007	Laterite road	New	1.8	Km	28.50	28.70
Tram Sesar	Rural Transport	2008	Laterite road	Repair	1.15	Km	28.25	28.25
Moung	Rural Transport	2005	Laterite road	Routine maintenance	2	Km	28.96	27.51
Moung	Rural Transport	2006	Laterite road	New	1.73	Km	30.53	30.53
Moung	Rural Transport	2007	Laterite road	New	1.8	Km	28.89	29.39
Moung	Rural Transport	2008	Laterite road	Repair	0.91	Km	27.19	27.19
Prei	Rural Transport	2005	Earth road	Upgrade	0.964	Km	27.26	25.62
Prei	Rural Transport	2006	Laterite road	New	0.35	Km	5.72	29.34
Prei	Rural Transport	2006	Earth road	Repair	0.5	Km	22.11	29.34
Prei	Rural Transport	2007	Double pipe culvert	New	1	Place	3.04	28.00
Prei	Rural Transport	2007	Double cell box culvert	New	2	Place	25.21	28.00
Prei	Rural Transport	2008	Earth road	Repair	0.7	Km	25.10	21.60
Slaeng Spean	Rural Transport	2005	Single pipe culvert	New	4	Place	7.04	35.23
Slaeng Spean	Rural Transport	2005	Wood bridge, 5 tonne standard, concrete abutments	New	1	Place	28.48	35.23
Slaeng Spean	Rural Transport	2006	Laterite road	New	2.092	Km	31.12	31.12
Slaeng Spean	Rural Transport	2007	Laterite road	New	2.3	Km	29.63	29.83
Slaeng Spean	Rural Transport	2008	Laterite road	Repair	1.85	Km	32.77	32.77

*Source: PID*

**8.4 Total Expenditure on C/S Fund Projects by sector and commune between 2005 and 2008**

Sector	Total Cost in Million Riels					
	Chrouy Neang Nguon	Klang Hay	Tram Sesar	Moung	Prei	Slaeng Spean
Rural Transport	118.80	100.71	113.31	114.62	104.56	128.96

*Source: PID***8.5 Actual 2009 C/S Fund projects by Commune**

Commune	Project Type	Project Output		Quantity	Unit	Fund Source (Riels)		
		Description	Type			Total	C/S	Local Contribution
Chrouy Neang Nguon	Rural Transport	Laterite road	Repair	2.2	km	38,875,200	38,175,200	700,000
Klang Hay	Rural Transport	Laterite road	Repair	1.1	km	30,160,000	29,160,000	1,000,000
Tram Sesar	Rural Transport	Earth road	Repair	2.5	km	37,508,000	36,508,000	1,000,000
Moung	Rural Transport	Laterite road	Repair	0.75	km	33,244,000	32,944,000	300,000
Prei	Rural Transport	Earth road	Repair	0.85	km	32,036,000	31,736,000	300,000
Slaeng Spean	Rural Transport	Earth road	Repair	2.3	km	37,344,000	36,494,000	850,000

*Source: PID*

## 9 District level Projects from 2006 to 2009

District Initiative Projects (DIPs) are funded by Danida, DFID and PSDD (UNDP, DFID and SIDA).

### **Funding for 2006-2008**

Between 2006 and 2008 there were 14 provinces funded by PSDD and 10 by Danida and DFID. The list of provinces and who funded these is below

#### *Danida and DFID funded DIPs:*

Kampong Cham	Kampong Speu	Koh Kong	Kratie	Monduliri
Pursat	Ratanakiri	Siem Reap	Sihanoukville	Kep

#### *PSDD funded DIPs:*

Banteay Meanchey	Battambang	Kampong Chhnang	Kandal	Phnom Penh
Prey Veng	Svay Rieng	Takeo	Kampong Thom	Preah Vihear
Stung Treng	Kampot	Oddar Meanchey	Pailin	

### **Funding for 2009**

In 2009 there was a change to the number of provinces funded by the two streams. Danida and DFID were still funding the same 10 provinces they had been funding the previous three years, but two more provinces were added *Kampong Thom and Kampot*. Now PSDD funds 12 provinces and Danida and DFID fund 12.

## 9.1 District Initiative Infrastructure Projects from 2006 to 2009

### 9.1.1 District Initiative Infrastructure Projects for 2006 to 2008

Date	Project Name	Implementing Agencies	Budget (US\$)	Project Output & Capacity	Number of Beneficiaries
2007	Rehabilitate canal with 2000m	Inter-commune	6,400.00		
2007	Repair water reservoir of Trapeang Thom	Inter-commune	5,995.00		
2008	Dam rehabilitation of Spean Khmeng	Inter-commune	16,256.00	200m	5 communes
2008	Canal slope construction	Inter-commune	3,994.00	100m	5 communes

### 9.1.2 District Initiative Infrastructure Projects in 2009

*No District Initiative Infrastructure Projects have been implemented in this district for 2009*

## 9.2 District Initiative Service Projects from 2006 to 2009

### 9.2.1 District Initiative Service Projects for 2006 to 2008

Date	Project Names	Implementing agencies	Budget (US\$)	Project Output & Capacity	Number of Beneficiaries
2007	Disseminate land law	District Land	360.00		
2007	Training on compost making	District Agri	1,050.00		
2007	Dissemination on intensive agriculture system	District Agri	420.00		
2007	Soil improvement through cattle raising	District Agri	11,000.00		
2008	Intensified rice farming	District AGRI	1,923.00	3 commues	50 families
2008	Home gardening	District AGRI	637.00	6 communes	45 families
2008	Strengthen cow breed raising groups	District AGRI	540.00	6 communes	50 families
2008	Strengthen community forestry of Kokkhpos	Sangat Forestry Admin	3,650.00	1 commune	1 community

### 9.2.2 District Initiative Service Projects in 2009

Project Name	Sector	Implementing Agency	Budget	Project outputs/ capacities	No. of Beneficiaries		Progress	Remarks on Issues of Progress
					Total	Female		
System of rice intensification	AGR	Agriculture Office	\$1,923.00	50 families	477	162	40%	On going
Strengthen cow breed raising community	AGR	Agriculture Office	\$577.00	50 families	316	172	0%	
Strengthen the community forestry of Prey Phlung	AGR	Forestry Admin	\$4,250.00	1 community	8,375	4,606	40%	On going

## 9.3 Inter Commune Council Projects in 2008 and 2009

### 9.3.1 ICC Projects in 2008

*No ICC projects in this district at this time*

### **9.3.2 ICC Projects in 2009**

*No ICC projects in this district at this time*

**Source:** ICC project, Ministry of Interior (DoLA), -UNDP project for Local Governance – DDLG

## **9.4 Other Projects in 2008 and 2009**

### **9.4.1 RPRP**

*There are no RPRP projects being implemented in this district or province at this time. The RPRP is only being implemented in Svay Rieng and Prey Veng*

#### **9.4.1.1 RPRP Projects from 2006 to 2008**

*No RPRP projects in this district at this time*

#### **9.4.1.2 RPRP Projects in 2009**

*No RPRP projects in this district at this time*

### **9.4.2 Seth Korma**

#### **9.4.2.1 Seth Koma 2007**

*There are no Seth Korma projects being implemented in this district or province at this time.*

**Source:** UNICEF

#### **9.4.2.2 Seth Koma 2008**

*There are no Seth Korma projects being implemented in this district or province at this time.*

**Source:** UNICEF

#### **9.4.2.3 Seth Koma 2009**

*There are no Seth Korma projects being implemented in this district or province at this time.*

**Source:** UNICEF



## **SECTION D: SERVICES AND ORGANIZATIONS**





## 10 Infrastructure

### 10.1 Length of and Expenditure on Roads in 2008, by District

Roads	SRP	Angkor Chum	Angkor Thum	Banteay Srei	Chi Kraeng	Kralanh	Puok
Length of paved road in the district in Km	106	14	0	4	50	4	0
Length of unpaved roads in the district in Km	2,006	124	59	87	298	198	200
Amount spent on construction of roads in 2008 (\$)	n/a	n/a	n/a	n/a	n/a	n/a	n/a
Amount spent on repair and rehabilitation of roads in 2008 (\$)	n/a	n/a	n/a	n/a	n/a	n/a	n/a

Continue...

Roads	SRP	Prasat Bakong	Siem Reap	Soutr Nikom	Srei Snam	Svay Leu	Varin
Length of paved road in the district in Km	106	14	9	12	0	0	0
Length of unpaved roads in the district in Km	2,006	318	178	161	108	36	239
Amount spent on construction of roads in 2008 (\$)	n/a	n/a	n/a	n/a	n/a	n/a	n/a
Amount spent on repair and rehabilitation of roads in 2008 (\$)	n/a	n/a	n/a	n/a	n/a	n/a	n/a

**Note 1:** Please note that these data are not necessarily complete or correct. The data are derived from government agencies at provincial and district level which used different recording systems, did not always have complete data or were, sometimes, less than willing to share their data.

**Note 2:** Please be aware that these data are incomplete due to the fact that the amounts for the construction, repair and rehabilitation recorded reflect only funds provided by the government, not the contributions by any other parties.

### 10.2 Scale of and Expenditure on Irrigation in 2008, by District

Irrigation	SRP	Angkor Chum	Angkor Thum	Banteay Srei	Chi Kraeng	Kralanh	Puok
Number of irrigation schemes operating in 2008	55	3	3	4	5	4	na
Total nr of hectares under irrigation in dry season 2008	14,624	0	0	70	3,673	550	3,965
Total funds spent in 2008 on construction of irrigation systems (\$)	244,573	26,130	18,620	26,784	24,923	43,300	n/a
Total funds spent in 2008 on rehabilitation/repair of irrigation systems (\$)	73,542	6,102	4,500	5,379	7,207	0	n/a
Total funds spent in 2008 on operation and maintenance (\$)	-	0	0	0	0	0	0

Continue...

Irrigation	SRP	Prasat Bakong	Siem Reab	Soutr Nikom	Srei Snam	Svay Leu	Varin
Number of irrigation schemes operating in 2008	55	8	0	4	7	6	11
Total nr of hectares under irrigation in dry season 2008	14,624	2,150	2,544	1,672	0	0	0
Total funds spent in 2008 on construction of irrigation systems (\$)	244,573	16,810	0	1,908	31,468	23,590	31,040
Total funds spent in 2008 on rehabilitation/repair of irrigation systems (\$)	73,542	3,294	0	22,321	16,753	6,700	1,286
Total funds spent in 2008 on operation and maintenance (\$)	-	0	0	0	0	0	0

**Note 1:** Please note that these data are not necessarily complete or correct. The data are derived from government agencies at provincial and district level which used different recording systems, did not always have complete data or were, sometimes, less than willing to share their data.

**Note 2:** Please be aware that the data above are incomplete as these only reflect funds provided by the government, not the contributions by farmers or other parties.

### 10.3 Power Supply in 2008, by District

Electricity	SRP	Angkor Chum	Angkor Thum	Banteay Srei	Chi Kraeng	Kralanh	Puok
Total number of electricity connections to households	39,286	172	0	308	1,376	814	2,001
Total number of electricity connections to agencies, companies, organizations	388	0	0	0	0	0	0
Total volume in KWh of electricity consumed last in 2008	268,894,510	n/a	0	n/a	n/a	n/a	n/a
Total amount collected from users for consumed electricity (\$)	9,966,449	n/a	0	n/a	n/a	n/a	n/a
Per capita electricity consumption in 2008 in Kwh	747	n/a	0	n/a	n/a	n/a	n/a

Continue...

Electricity	SRP	Prasat Bakong	Siem Reab	Soutr Nikom	Srei Snam	Svay Leu	Varin
Total number of electricity connections to households	39,286	578	17,467	1,441	61	17	79
Total number of electricity connections to agencies, companies, organizations	388	0	194	0	0	0	0
Total volume in KWh of electricity consumed last in 2008	268,894,510	n/a	134,447,255	n/a	n/a	n/a	n/a
Total amount collected from users for consumed electricity (\$)	9,966,449	n/a	4,983,224	n/a	n/a	n/a	n/a
Per capita electricity consumption in 2008 in Kwh	747	n/a	n/a	n/a	n/a	n/a	n/a

**Note 1:** Please note that these data are not necessarily complete or correct. The data are derived from government agencies at provincial and district level which used different recording systems, did not always have complete data or were, sometimes, less than willing to share their data.

**Note 2:** These data only record electricity provided by electricity companies and does not include homes powered by generators or batteries (for this information see Section B: General Profile, Part 1: General Information; table 1.3.1 and chart 1.3.4).

**Note 3:** In most provinces electricity is only provided through town-based networks

**Note 4:** Per capita consumption is calculated by dividing the total volume of electricity produced in 2008 by the number of people living in each district as per the 2008 census (for the provincial data it is calculated against the number of people living in the province)

## 11 Health Facilities

Please note that the Operational District (health) boundaries are different to the administrative district boundaries. Therefore the data provided here shows the facilities, staff, NGOs etc in each Operational District within the province NOT the administrative district.

### Acronyms

<b>Com Cov</b>	Commune Covered	<b>MW2</b>	Secondary Midwives
<b>CPA</b>	Complementary Package of Activities	<b>NU1</b>	Primary Nurse
<b>Dr</b>	Doctor	<b>NU2</b>	Secondary Nurse
<b>FDH</b>	Former District Hospital	<b>OD</b>	Operational District
<b>HC</b>	Health Center	<b>Others</b>	Other Staff
<b>HC (NB)</b>	Health Center no building	<b>PHD</b>	Provincial Health Department
<b>HP</b>	Health Post	<b>Pop 04-05</b>	Population Covered 2004 or 2005
<b>MA</b>	Medical Assistant	<b>RH</b>	Referral Hospital
<b>MPA</b>	Minimum Package of Activities	<b>Vil Cov</b>	Village Covered
<b>MW1</b>	Primary Midwives	<b>VIL-HC</b>	Distance from Village to Health Center

### 11.1 Health Facilities in the Province, by Operational District

Siem Reap	OD	RH	HC	HP
Angkor Chum	1		15	
Kralanh	1	1	10	
Siem Reap	1	1	16	
Sotr Nikum	1	1	19	
<b>Total</b>	<b>4</b>	<b>3</b>	<b>60</b>	<b>0</b>

### 11.2 Health Facilities and Staff in the province, by Operational District

This table shows health facilities, staff and coverage of health facilities in each operational district.

No	Facility Name	Type	Class	Dr	Ma	Nu2	Nu1	Mw2	Mw1	Others	Com Cov	Vil Cov	Pop. 04-05
<b>Kralanh</b>													
1	Chonleas Dai	HC(NB)	None	0	0	0	0	0	0	0	3	13	10,274
2	Kampong Thkov	HC	MPA	0	0	0	2	0	2	2	3	21	14,721
3	Prei	HC(NB)	None	0	0	0	0	0	0	0	2	12	11,627
4	Prey Chrouk	HC	MPA	0	0	3	1	1	1	0	1	12	10,453
5	Rong Ko	HC	MPA	0	0	1	3	1	0	0	2	17	12,016
6	Sambour	HC	MPA	0	0	0	2	0	1	1	2	11	9,053
7	Sen Sokh	HC	MPA	0	0	1	1	1	0	0	3	25	17,472
8	Slaeng Spean	HC	MPA	0	0	2	2	0	0	0	2	21	13,215

No	Facility Name	Type	Class	Dr	Ma	Nu2	Nu1	Mw2	Mw1	Others	Com Cov	Vil Cov	Pop. 04-05
9	Sraey Snam	FDH	MPA	0	0	5	1	0	0	1	2	9	9,004
<b>Total:</b>				<b>0</b>	<b>0</b>	<b>12</b>	<b>12</b>	<b>3</b>	<b>4</b>	<b>4</b>	<b>20</b>	<b>141</b>	<b>107,835</b>
<b>Siem Reap</b>													
1	Sranal	HC(NB)	None	0	0	0	0	0	0	0	1	13	9,420
2	AngKor Thum	FDH	MPA	0	1	3	2	1	0	0	1	8	7,807
3	Banteay Sraey	FDH	MPA	0	0	2	3	2	0	1	4	12	10,007
4	Chong Khnies	HC	MPA	0	0	3	2	2	0	0	1	7	5,858
5	Chreav	HC	MPA	0	0	2	2	2	1	0	3	14	13,193
6	Kandek	HC	MPA	0	0	2	1	2	1	1	2	16	14,083
7	Kantreang	HC	MPA	0	0	2	2	2	1	1	4	19	16,140
8	Kouk Chak	HC	MPA	0	0	1	4	1	0	0	2	12	20,217
9	Mean Chey	HC	MPA	0	0	3	2	0	1	1	3	12	11,501
10	Mondul I	HC	MPA	3	2	1	2	6	1	1	2	10	37,707
11	Peak Sneng	HC	MPA	0	0	3	0	1	0	1	2	10	7,089
12	Po Mean Chey	HC	MPA	0	0	2	1	4	0	0	1	8	12,402
13	Prasat Bakorng	FDH	MPA	0	0	5	1	2	0	0	5	17	19,909
14	Preak Dak	HC	MPA	0	0	3	1	1	0	1	2	9	10,344
15	Rumchek	HC	MPA	0	0	1	2	0	0	1	3	11	12,849
16	Sambour	HC	MPA	0	0	1	2	2	1	0	3	17	11,791
<b>Total:</b>				<b>3</b>	<b>3</b>	<b>34</b>	<b>27</b>	<b>28</b>	<b>6</b>	<b>8</b>	<b>39</b>	<b>195</b>	<b>220,317</b>
<b>Sotr Nikum</b>													
1	Siem Reap	FDH	MPA	0	0	3	4	3	0	1	2	10	31,911
2	Anlong Samnar	HC	MPA	0	0	3	2	1	0	0	2	28	18,420
3	Chan Sar	HC	MPA	0	0	2	2	1	0	0	2	23	10,949
4	Dam Daek	HC	MPA	0	0	1	1	1	1	0	2	12	12,379
5	Dan Run	HC	MPA	0	0	2	1	2	0	0	2	14	12,911
6	Kampong Kdei	FDH	MPA	1	1	3	3	3	0	1	2	21	14,650
7	Kampong Khlaing	HC	MPA	0	0	3	0	1	1	0	1	10	10,900
8	Khchas	HC	MPA	0	0	1	1	1	0	0	2	11	19,228
9	Khvav	HC	MPA	0	0	1	0	1	0	0	1	9	9,775
10	Kien Sangkae	HC	MPA	0	0	0	1	2	1	0	4	16	15,804
11	Kok Thlok Kraum	HC	MPA	0	0	2	0	0	1	0	3	13	10,129
12	Kouk Thlork Leu	HC(NB)	None	0	0	0	0	0	0	0	3	18	11,693
13	Lveng Russei	HC	MPA	0	0	2	1	0	0	0	1	13	10,637
14	Pongro Kraum	HC	MPA	0	0	3	1	1	0	0	3	17	10,412

No	Facility Name	Type	Class	Dr	Ma	Nu2	Nu1	Mw2	Mw1	Others	Com Cov	Vil Cov	Pop. 04-05
15	Popel	HC	MPA	0	0	1	2	1	0	0	4	17	13,049
16	Ruessei Lok	HC(NB)	None	0	0	0	0	0	0	0	1	6	12,906
17	Samraong	HC	MPA	0	0	2	1	2	1	0	2	13	11,336
18	Sangveuy	HC	MPA	0	0	2	1	2	0	0	2	7	8,697
19	Spean Tnaot	HC	MPA	0	0	2	2	1	0	0	2	18	10,857
<b>Total:</b>				<b>1</b>	<b>1</b>	<b>33</b>	<b>23</b>	<b>23</b>	<b>5</b>	<b>2</b>	<b>41</b>	<b>276</b>	<b>256,643</b>
<b>Angkor Chum</b>													
1	Svay Leu	FDH	MPA	0	0	1	2	0	0	2	5	30	18,678
2	Angkor Chum	FDH	MPA	0	0	4	1	1	0	1	3	20	10,348
3	Bott	HC	MPA	0	0	1	1	0	0	0	3	19	11,925
4	Char Chhouk	HC	MPA	0	0	2	1	1	0	0	2	20	10,100
5	Damnak Slanh	HC(NB)	None	0	0	0	0	0	0	0	3	11	7,902
6	Daunkeo	HC	MPA	0	0	2	3	1	1	0	1	14	13,013
7	Kouk Daung	HC	MPA	0	0	1	2	0	1	1	1	15	13,743
8	Krabei Riel	HC(NB)	None	0	0	0	0	0	0	0	2	16	9,915
9	Nokor Pheas	HC	MPA	0	0	2	1	0	1	0	2	13	10,367
10	Pouk	FDH	MPA	3	2	14	8	3	2	3	2	18	18,188
11	Reul	HC	MPA	0	0	2	1	1	2	0	2	22	18,448
12	Samraong Yea	HC	MPA	0	0	2	1	1	3	0	3	18	13,238
13	Sasar Sdam	HC	MPA	0	0	2	3	2	0	0	4	22	16,163
14	Svay Sa	FDH	MPA	0	0	2	2	0	1	0	3	16	11,142
15	Teuk Vil	HC	MPA	0	0	1	5	1	1	0	3	16	14,214
<b>Total:</b>				<b>3</b>	<b>2</b>	<b>36</b>	<b>31</b>	<b>11</b>	<b>12</b>	<b>7</b>	<b>39</b>	<b>270</b>	<b>197,384</b>
<b>Total All</b>				<b>7</b>	<b>6</b>	<b>115</b>	<b>93</b>	<b>65</b>	<b>27</b>	<b>21</b>	<b>139</b>	<b>882</b>	<b>782,179</b>

Source: MEDiCAM – Infrastructure - ([http://www.medicam-cambodia.org/hsi/health\\_system/srch/index.asp?cboLcn=6&cmdSearch=Search&cboCHName=&cboType=](http://www.medicam-cambodia.org/hsi/health_system/srch/index.asp?cboLcn=6&cmdSearch=Search&cboCHName=&cboType=))

### 11.3 Deliveries in 2007 in the Province, by Operational District

OD	Deliveries	Deliveries at home		Deliveries	Total deliveries	Total deliveries
	at HC	By Health Staff	By TBAs	at RH	by Health Staff	by health staff and TBAs
Kralanh	355	1192	1087	222	1769	2856
Siem Reap	277	6559	1910	129	6965	8875
Sot Nikum	1820	1306	2030	78	3204	5234
Ankor Chhum	1564	1861	2327	0	3425	5752
<b>Sub-total</b>	<b>4016</b>	<b>10918</b>	<b>7354</b>	<b>429</b>	<b>15363</b>	<b>22717</b>

Source: MoH, Annual Statistics 2007

## 12 Education<sup>3</sup>

### 12.1 Schools, Classes, Students, Staff, for for all levels, for 2007/2008 by District

District	Number of Schools	Disadv. Schools	Number of Classes	Classes in Pagoda	Enrollment		Repeaters		Teaching Staff		Non-Teaching Staff		Total Staff	
					Total	Girl	Total	Girl	Total	Female	Total	Female	Total	Female
Angkor Chum	44	0	330	0	14,767	7,099	1,806	902	200	67	33	5	233	72
Angkor Thom	20	0	134	0	6,263	3,135	1,230	618	74	33	14	6	88	39
Banteay Srey	29	0	220	0	10,074	4,848	1,629	746	103	57	35	17	138	74
Chi Krong	83	0	642	0	28,484	13,701	2,709	1,140	365	167	94	25	459	192
Kralanh	47	1	321	0	14,667	6,688	1,684	697	226	73	37	8	263	81
Prasat Bakong	49	1	377	0	17,116	7,907	1,527	604	282	170	69	24	351	194
Puok	84	2	778	0	34,779	16,551	3,559	1,377	632	326	171	46	803	372
Saut Nikum	71	4	560	1	25,181	12,279	2,512	1,118	352	210	102	25	454	235
Siemreap	68	0	1,060	2	52,899	24,317	4,257	1,636	1,291	760	295	156	1,586	916
Srey Snam	38	0	231	6	8,938	4,281	1,151	492	196	57	31	4	227	61
Svay Leu	31	0	144	6	5,743	2,726	1,205	583	80	38	7	0	87	38
Varin	26	1	179	0	7,872	3,855	1,164	598	92	22	16	1	108	23
<b>Whole Province</b>	590	9	4,976	15	226,783	107,387	24,433	10,511	3,893	1,980	904	317	4,797	2,297
- Urban Area	68	0	1,060	2	52,899	24,317	4,257	1,636	1,291	760	295	156	1,586	916
- Rural Area	465	8	3,593	7	160,269	76,489	17,807	7,694	2,430	1,160	586	160	3,016	1,320
- Remote Area	57	1	323	6	13,615	6,581	2,369	1,181	172	60	23	1	195	61

### 12.2 Characteristics of Schools and School Principals for 2007/2008 by Commune

Commune	Number of Schools				2 - Shift	Floating	Schools	Attached	Schools Without			Characteristics of School Principals (Incharge)			
	Pre-Sch	Primary	College	Lycee	Schools	Schools	in Pagoda	Pre-Sch	Water Sup.	Latrine		Avg. Age	Avg. Service	U.Sec+ Ed.	Female
Chrouy Neang Nguon	3	3	1	0	4	0	0	3	4	1		38.6	16.0	2	0
Klang Hay	1	3	0	0	2	0	0	1	1	1		45.2	21.3	0	0
Tram Sasar	1	4	0	0	4	0	0	1	2	2		39.9	17.6	1	1
Moung	2	3	1	0	3	0	0	2	4	3		45.0	20.5	0	0
Prei	2	3	1	0	3	0	0	2	4	3		39.6	25.0	0	0
Slaeng Spean	1	9	0	0	9	0	0	1	5	4		24.7	12.1	0	0

<sup>3</sup> All the data for section 12 comes from the Ministry of Education, Youth and Sport (MoEYS)

**12.3 Enrolment by Level of Education, 2006/2007 by Commune**

Commune	School	Pre school		Primary School		Lower Secondary School		Upper Secondary School		Enrolment	
		Total	Female	Total	Female	Total	Female	Total	Female	Total	Female
Chrouy Neang Nguon	7	94	42	1444	721	1241	552	0	0	2779	1315
Klang Hay	4	28	10	623	283	0	0	0	0	651	293
Tram Sazar	4	0	0	1391	651	0	0	0	0	1391	651
Moung	4	0	0	1109	553	123	46	0	0	1232	599
Prei	3	0	0	781	360	0	0	0	0	781	360
Slaeng Spean	10	35	13	2050	993	0	0	0	0	2085	1006

**12.4 Enrolment by Level of Education, 2007/2008 by Commune**

Commune	School	Pre school		Primary School		Lower Secondary School		Upper Secondary School		Enrolment	
		Total	Female	Total	Female	Total	Female	Total	Female	Total	Female
Chrouy Neang Nguon	7	125	57	1336	661	1320	646	0	0	2781	1364
Klang Hay	4	22	7	596	263	0	0	0	0	618	270
Tram Sazar	5	30	15	1343	655	0	0	0	0	1373	670
Moung	6	67	29	992	491	210	99	0	0	1269	619
Prei	6	53	19	773	354	112	49	0	0	938	422
Slaeng Spean	10	31	16	1928	920	0	0	0	0	1959	936

**12.5 Aspects of Enrolment for 2007/2008 by Commune**

Commune	% Repeaters (Total)			% Over-age Enrollment (Total)			% Repeaters (Girl)			% Over-age Enrollment (Girl)		
	Primary	L.Sec.	U.Sec.	Primary	L.Sec.	U.Sec.	Primary	L.Sec.	U.Sec.	Primary	L.Sec.	U.Sec.
Chrouy Neang Nguon	18.0	0.4	0.0	30.9	58.7	0.0	13.6	0.2	0.0	28.9	54.2	0.0
Klang Hay	7.7	0.0	0.0	32.6	0.0	0.0	9.1	0.0	0.0	28.5	0.0	0.0
Tram Sazar	20.5	0.0	0.0	35.7	0.0	0.0	18.3	0.0	0.0	32.1	0.0	0.0
Moung	12.2	0.0	0.0	23.8	38.1	0.0	11.2	0.0	0.0	22.6	35.4	0.0
Prei	13.8	0.0	0.0	23.5	33.0	0.0	13.3	0.0	0.0	22.6	30.6	0.0
Slaeng Spean	18.5	0.0	0.0	34.2	0.0	0.0	16.8	0.0	0.0	31.8	0.0	0.0

**12.6 School Buildings for all schools in the District for 2007/2008, by Commune**

Commune	Total Number of		Concrete/Brick Structure		Wooden Structure		Bamboo Structure		New Buildings		Buildings Without Good		
	Buildings	Rooms	Buildings	Rooms	Buildings	Rooms	Buildings	Rooms	Repaired	Constructed	Floor	Roof	Wall
Chrouy Neang Nguon	11	57	8	44	3	13	0	0	0	3	1	1	0
Klang Hay	6	20	5	19	0	0	1	1	0	1	0	1	1
Tram Sagar	11	24	5	13	3	8	3	3	0	1	1	0	0
Moung	7	25	5	19	1	3	1	3	0	0	4	0	0
Prei	5	26	5	26	0	0	0	0	0	0	1	1	1
Slaeng Spean	16	42	4	18	7	18	5	6	0	1	2	2	3

**12.7 Conditions of Classrooms and Existence of Separate School Office and Library, by Commune**

Commune	Number of Class rooms	Number of Classrooms			Classrooms Without Good			Number of Furniture needed				Schools with Separate	
		in Pagoda	New Repaired	New Constr.	Floor	Roof	Wall	Desks	Chairs	Black-board	Teacher Table	Office	Library
Chrouy Neang Nguon	49	6	0	18	3	4	0	0	0	0	0	4	4
Klang Hay	15	0	0	6	0	1	1	0	0	0	1	3	3
Tram Sagar	21	0	0	2	6	0	0	0	0	0	6	1	0
Moung	18	0	0	0	13	0	0	0	0	0	0	4	3
Prei	18	0	0	0	6	6	6	0	0	0	0	3	2
Slaeng Spean	35	0	0	3	3	3	6	60	84	2	8	3	1

**12.8 Community Participation and Financing across all schools in the District for 2007/2008 by Commune**

Commune	Parent Association				Commu. Teachers	Teaching Monks	PAP Fund (Riel)		Number of Schools Obtaining Funds from				
	Exists	Held Meet	Total	Female			per Student	per School	Sch. Income	Community	Gvt. For building	Abroad	IOs/NGOs
Chrouy Neang Nguon	5	5	7	1	0	0	11,469	4,399,000	0	0	0	0	0
Klang Hay	3	4	9	1	0	0	10,757	1,675,375	0	0	0	0	0
Tram Sagar	5	5	5	2	0	0	8,476	3,178,450	0	0	0	0	0
Moung	3	3	8	1	0	0	9,783	1,917,538	0	0	0	0	0
Prei	3	3	7	2	0	0	9,309	2,423,467	0	0	0	0	0
Slaeng Spean	9	9	5	0	0	0	10,757	1,624,360	0	0	0	0	0



**12.9 Percentage Student Flow Rates and Graduation by level 2006/2007, by Commune**

Commune	Primary Level (Grades 1-6)			Lower Secondary Level (Grades 7-9)			Upper Secondary Level (Grades 10-12)			Successful Candidates		
	Promotion	Repetition	Dropout	Promotion	Repetition	Dropout	Promotion	Repetition	Dropout	Grade 6	Grade 9	Grade 12
Chrouy Neang Nguon	77.5	16.6	5.9	85.4	0.4	14.2	0.0	0.0	0.0	206	244	0
Klang Hay	90.2	7.4	2.4	0.0	0.0	0.0	0.0	0.0	0.0	98	0	0
Tram Sasar	71.2	19.8	9.1	0.0	0.0	0.0	0.0	0.0	0.0	101	0	0
Moung	77.9	10.9	11.2	73.2	0.0	26.8	0.0	0.0	0.0	158	0	0
Prei	83.5	13.7	2.8	0.0	0.0	0.0	0.0	0.0	0.0	112	0	0
Slaeng Spean	73.7	17.4	8.9	0.0	0.0	0.0	0.0	0.0	0.0	184	0	0

## 13 Staff and Resources at the District

*This chapter presents data from the District Information System, collected around the middle of 2009 unless otherwise specified.*

### 13.1 District Councilors elected in 2009

Name	Sex	Year of Birth	Function	Phone
តូច ស៊ឹម	M	1950	Chairperson of The Council	092-809 045
ជឿ គឹមរួន	M	1950	Councillor	097-986 6092
គឹម រស់	M	1942	Councillor	092-219 560
នេត សុភិន	M	1942	Councillor	092-476 073
លឹម លេង	M	1945	Councillor	011-414 331
ឡុត ញាន	M	1982	Councillor	097-986 5594
ស្មៅ វិធាន	M	1949	Councillor	097-912 6955
ណយ យឿប	M	1944	Councillor	097-942 5429
ហ៊ាន់ ហោន	M	1956	Councillor	097-668 2021
ម៉ៅ លឿយ	M	1956	Councillor	092-654 071
សំ ប៊ុនណារិទ្ធ	M	1957	Councillor	092-937 143
ហូ ឈិន	M	1955	Councillor	092-904 430
អ៊ុយ វណ្ណឌី	M	1950	Councillor	012-162 0839

### 13.2 Committees of the Council

*Please note at the time of producing the district data books the composition of the committees was not known for all district councils and therefore data were not available for 13.2.1, 13.2.2, 13.2.3.*

#### 13.2.1 Technical Facilitation Committee

#### 13.2.2 Women's and Children's Affairs Committee

#### 13.2.3 Procurement Committee

### 13.3 Board of Governors

Name	Sex	DoB	Function	Salary Level	Body	Phone
ម៉ក់ សំភារ	M	1958	District Governor	ក.៣.៤	High Ranking Civil Servant	012-630 054
ធីញ ថាន់	M	1964	District Deputy Governor	ខ.៣.៧	Medium Civil Servant	089-783 516
ថាន់ រ៉ុន	F	1947	District Deputy Governor	ខ.៣.៨	Medium Civil Servant	092-950 529
ឈិន ប៊ុនលឿ	M	1959	District Deputy Governor	គ.១.៤	Secretary	012-875 774

### 13.4 Offices under Sala Krong, Sala Srok and Sala Khan

Office Name	Chief		Deputy Chief		No. of Staff				Office Area (m2)	No of vehicle (public or program)	
					State		Contract			vehicle	moto
	M	F	M	F	M	F	M	F			
District/ Khan Cabinet	1	0	0	0	1	0	1	1	169	0	1
Adminnistration Office	0	1	0	0	2	2	0	0	Borrow	0	0
Economy Office	0	0	0	0	1	1	0	0	Borrow	0	0
Social Affair Office	1	0	0	0	2	0	0	0	0	0	1

### 13.5 Municipality/District/Khan line offices

Office Name	Chief		Deputy Chief		No. of Staff				Office Area (m2)	No of vehicle (public or program)	
					State		Contract				
	M	F	M	F	M	F	M	F		vehicle	moto
District/ Khan Police Headquarter	1	0	3	0	69	7	0	0	112	0	8
District/ Khan Military Police Headquarter	1	0	2	0	5	0	0	0	14.55	0	0
District/ Khan Military Subregion	1	0	2	0	13	0	0	0	50	0	0
Planning Office	1	0	0	1	0	0	0	0	Borrow	0	1
Women Affairs Office	0	1	0	1	0	0	0	0	Borrow	0	0
Education Office	1	0	1	0	212	77	0	0	96	0	0
Agriculture Office	1	0	1	0	0	2	1	0	108	0	0
Culture Office	1	0	0	0	0	0	0	0	Borrow	0	0
Cult and Religion Office	1	0	0	0	0	0	0	0	Borrow	0	1
Finance Office	1	0	0	0	1	0	0	0	Borrow	0	0
Information Office	1	0	0	0	0	0	0	0	Borrow	0	0
Public Work Office	1	0	1	0	0	0	0	0	Borrow	0	0
Post Office	1	0	0	0	0	0	0	0	Borrow	0	0
Lan Management Office	1	0	0	0	0	0	0	0	Borrow	0	0
Forestrv Administration Sangkat	1	0	0	0	2	0	2	1	90	0	1

### 13.6 Properties and Equipment of District Administration

#### 13.6.1 Buildings

Description	Unit	Number	Remark
Office building type			
- Concrete	building	1	
- Wood	building	1	
- Mixed	building	0	
Total floor space	m2		
- Concrete	m2	186	
- Wood	m2	115.22	
- Mixed	m2	0	
Building condition			
- Concrete	%	95	
- Wood	%	50	
- Mixed	%	0	
Office reserved land area	m2	0	
Total office land area	m2	18,238	

**13.6.2 Means of Transport available at the District Administration**

Description	Unit	Number	Remark
Vehicle (type, size and condition)	Vehicle	0	
Motorcycle (type, size and condition)	Motor	0	

**13.6.3 Equipment in District Offices**

Description	Unit	Number	Remark
Generator	per set	0	
Photocopy machine at the office	per set	0	
Private photocopy machine at the district town	place	2	
Telephone network (land line service)	network	0	
Fax (include Fax number)	per set	0	
Computer	per set	2	
Printer	per set	1	
Scanner	Per set	0	
Number of computers those can access Internet and email services in the municipality/ district/khan office (including the technical line offices (please provide the email address)	set	0	
Typewriters (including the technical line offices)	per set	2	
Staff of Municipality/district/khan office can use computer	person	3	

**13.6.4 Equipment and facilities at the District Town**

Description	Unit	Number	Remark
Availability of electricity at noon	Nr Hours	8	
Private internet and email services in the municipality/ district/khan town.	place	0	

**13.7 Registered Revenue of the District Administration in 2008<sup>4</sup>****13.8 Services in the District****13.8.1 Public Sector Services**

Type of Infrastructure/services	Unit	Number	
		Public	Private
Schools			
Pre-school	room	15	0
Primary School	room	143	0
Secondary school	room	28	0
High School	room		
University	room		
Health			
Health post	place		
Health center	place	3	0
Referral Hospital	bed		

<sup>4</sup> Please note that the data in this table are at best estimates. If the table appears blank it does not mean there is no revenue, just that the data have not been recorded/entered.

### 13.9 Civil Society Organizations active in the District

#### 13.9.1 NGOs, Associations, Programs and Projects

Name	Abbr.	Sector Activities	No. of Target Communes	No. of Target Villages	Office in District
District initiative	DI	ពង្រឹងតួនាទីថ្នាក់ស្រុក	6	39	Yes
NA	DKU	ជំនួយ	2	2	Yes
NA	ECOSORN	អប់រំ, សុខភាព, កសិកម្ម	4	14	Yes
NA	HNDICAP	សង្គមកិច្ច	4	9	Yes
NA	PLAN	អប់រំ និងអនាម័យ	5	33	Yes
WORLD FOOD	WORLD FOOD	គមនាគមន៍	4	4	No
NA	NA	មិនមាន	6	39	Yes
NA	NA	មិនមាន	3	21	Yes
NA	RACHA	ឥណទាន	4	13	No
NA	NRML	មិនមាន	6	39	Yes
NA	CSCS	សុខភាពអនាម័យ	6	13	Yes
UNFPA	UNFPA	សុខាភិបាល, យេនឌ័រ	6	39	No

#### 13.9.2 Political Parties active in the Municipality, District and Khan

Name	Abbr.	Office in District
Cambodian People Party	CPP	Yes
FUNCINPEC Party	FUNCINPEC	Yes
Human Rights Party	HRP	Yes
NRP	NRP	Yes
SAM RAINSY Party	Sam Rainsy Party	Yes

### 13.10 Private Sector Organizations

#### 13.10.1 Registered Companies in 2008, by District

On private sector at commune and/or district level	SRP	Angkor Chum	Angkor Thum	Banteay Srei	Chi Kraeng	Kralanh	Puok
<b>Businesses and Companies</b>							
Number of registered agricultural enterprises (except family farms)	3	0	0	0	0	0	1
Number of registered shops, restaurants, transporters and other services	1,553	n/a	n/a	1	4	6	10
Number of manufacturing companies	-	0	0	0	0	0	0
Number of registered forestry enterprises	-	0	0	0	0	0	0
Number of registered mining companies	n/a	n/a	n/a	n/a	n/a	n/a	n/a
Number of financial institutions	40	2	1	2	4	4	5
Number of other commercial institutions	n/a	n/a	n/a	n/a	n/a	n/a	n/a
Estimated number of informal enterprises (not registered)	n/a	n/a	n/a	n/a	n/a	n/a	n/a
<b>Employment</b>							
Number of people employed in 2008 by companies or any other enterprises	6,431	38	83	411	452	164	140
<b>Investment</b>							
Amount invested in 2008 by private sector (\$)	n/a	n/a	n/a	n/a	n/a	n/a	n/a
<b>Markets</b>							
Number of markets, operating at least weekly	22	1	1	1	1	2	1

Continue...

On private sector at commune and/or district level	SRP	Prasat Bakong	Siem Reab	Soutr Nikom	Srei Snam	Svay Leu	Varin
<b>Businesses and Companies</b>							
Number of registered agricultural enterprises (except family farms)	3	0	2	0	0	0	0
Number of registered shops, restaurants, transporters and other services	1,553	3	1,521	6	n/a	n/a	2
Number of manufacturing companies	-	0	0	0	0	0	0
Number of registered forestry enterprises	-	0	0	0	0	0	0
Number of registered mining companies	n/a	n/a	n/a	n/a	n/a	n/a	n/a
Number of financial institutions	40	5	9	5	1	1	1
Number of other commercial institutions	n/a	n/a	n/a	n/a	n/a	n/a	n/a
Estimated number of informal enterprises (not registered)	n/a	n/a	n/a	n/a	n/a	n/a	n/a
<b>Employment</b>							
Number of people employed in 2008 by companies or any other enterprises	6,431	695	4,076	327	9	4	32
<b>Investment</b>							
Amount invested in 2008 by private sector (\$)	n/a	n/a	n/a	n/a	n/a	n/a	n/a
<b>Markets</b>							
Number of markets, operating at least weekly	22	2	8	4		0	1

**Note:** These data are not comprehensive as different companies and business are registered with different departments and not all departments were able or willing to provide detailed information. The number of informal enterprises reflects a rough estimate, made at provincial level and could not be verified.

**Source:** Unofficially collected at Provincial Level

### 13.10.2 Farmers in 2008, by District

*There were no data available for this district at the time data collection*

**Note:** Please note that these data are not necessarily complete or correct. The data are derived from government agencies at provincial and district level which used different recording systems, did not always have complete data or were, sometimes, less than willing to share their data.

**Source:** Unofficially collected at Provincial Level





## **SECTION E: POVERTY DATA**



## 14 Data on Poverty

### 14.1 Predicted Poverty Rates for 2009, by commune

The **Predicted Family Poverty Rate** is based on a statistical model (robust multilevel mixed effect regression) at village level developed by the NCDD M&E Unit and uses CDB data for making an estimate of the predicted poverty rate (this is: *the portion of total families in the district or commune who are expected to be poor*) for the following year using current year data.

The basis for this predicted poverty rate also uses IDPoor (a project of the Ministry of Planning with technical assistance provided by GTZ) data

Commune	2004	2009
Chrouy Neang Nguon	40.80%	31.90%
Klang Hay	42.70%	36%
Tram Sasar	47.70%	40.30%
Moung	46.30%	40.50%
Prei	42.60%	35.10%
Slaeng Spean	49.40%	43.40%

### 14.2 Poverty data from survey

#### 14.2.1 Identification of Poor Households Program (IDPoor)

The Ministry of Planning IDPoor Program has developed standardized Procedures for Identification of Poor Households in rural areas. These Procedures are implemented using a participatory and consultative process by sub-national government structures and community representatives.

The IDPoor Program is managed by the Ministry of Planning (MOP), in cooperation with the Ministry of Interior's Department of Local Administration (DOLA). The program is supported by the Federal Republic of Germany, with technical assistance provided by German Technical Cooperation (GTZ). In 2009, AusAID also provided funding support to the Program.

#### Objective

The IDPoor Program aims to implement the Procedures for Identification of Poor Households in rural areas as widely as possible, in order to provide data on the level of poverty of areas and households that can be used by a large range of institutions and organizations for targeting services and development assistance to poor areas and poor households.

**Coverage:** During 2007, 2008 and 2009 the IDPoor Procedures have been implemented in 18 provinces (with partial or complete coverage), covering a total of around 7000 rural villages. The MOP and a number of NGO partners who are Health Equity Fund Operators have collaborated in collecting this data from different areas.

**Categorization:** Identified poor households are classified under two poverty categories: Poor Level 1 (very poor), and Poor Level 2 (poor). Households are classified based on data collected using a standard questionnaire, together with consideration by villagers of these households' special circumstances.

**Further information:** Please go to the IDPoor Program webpage at [www.mop.gov.kh/Projects/IDPoor/tabid/154/Default.aspx](http://www.mop.gov.kh/Projects/IDPoor/tabid/154/Default.aspx)

Commune	Poor 1 HHs	Poor 2 HHs	Poor 1 HHs	Poor 2 HHs	Total Poor 1&2 HHs	Total HHs in Commune
Chrouy Neang Nguon	123	239	10.0%	19.4%	29.4%	1231
Klang Hay	63	84	10.2%	13.6%	23.8%	617
Tram Sasar	184	253	16.8%	23.1%	39.9%	1096
Moung	163	178	20.0%	21.8%	41.7%	817
Prei	103	94	14.2%	12.9%	27.1%	727
Slaeng Spean	235	374	15.1%	24.0%	39.1%	1557